



CITY OF BETHEL
PUBLIC WORKS COMMITTEE
WEDNESDAY, OCTOBER 15, 2025, 5:30 PM

LOCATION: 300 CHIEF EDDIE HOFFMAN HIGHWAY, BETHEL, ALASKA

JOIN MEETING AT ZOOM.US:

[HTTPS://US06WEB.ZOOM.US/J/3350154000?PWD=HYFLQJB5BBF9IUAXHBN9SOZQAFWPLS.1&OMN=81314125060](https://us06web.zoom.us/j/3350154000?pwd=HYFLQJB5BBF9IUAXHBN9SOZQAFWPLS.1&OMN=81314125060)

MEETING ID: 335 015 4000

PASSCODE: 140569

US TOLL-FREE PHONE NUMBERS: 888 475 4499; 833 548 0276; 833 548 0282; 877 853 5257

MEMBERS

Ryan Butte, Council Rep. Mark Springer, Beth Hessler, Juan Delgado, Kelsi Kime

STAFF

Ex-Officio Members: Bill Arnold, Public Works Director
Colin Atti, Administrative Asst.
pwadmin@cityofbethel.net
907-543-3110

I. CALL TO ORDER

II. ROLL CALL

III. PEOPLE TO BE HEARD – FIVE MINUTES PER PERSON

- A. Please submit written public comments to pwadmin@cityofbethel.net by 4:00 p.m. the day of the meeting.

IV. APPROVAL OF AGENDA

V. APPROVAL OF MEETING MINUTES

- A. 8/20/2025 Public Works Committee Meeting Minutes

VI. UNFINISHED BUSINESS

VII. NEW BUSINESS

- A. Chip Seal Information
- B. Natural Pave Road Stabilization
- C. Potential to Pave Ptarmigan Road (Hessler)
- D. Extending Piped Services (Hessler)

VIII. EX OFFICIO REPORT

- A. Review of Ordinance Amending Bethel Municipal Code 13.08, Sewer Services, Delinquent Accounts
- B. Manager's Reports October 2025
- C. IM 25-09 Supporting Documents RUBA Montly Report Financials

IX. MEMBER COMMENTS

X. ADJOURNMENT

Posted 10/09/2025 at City Hall, AC Co., Swanson's, and the Post Office.

Ex-Officio Staff

Posted 10/09/2025 at City Hall, AC Co., Swanson's, and the Post Office.

Ex-Officio Staff

City of Bethel, Alaska

Public Works Committee Minutes

August 20, 2025

Regular Meeting

Bethel, Alaska

I. CALL TO ORDER:

A regular Public Works Committee Meeting was held on August 20, 2025. Ryan Butte called the meeting to order at 05:34 pm.

II. ROLL CALL:

Comprising a quorum of the committee, the following were present for Roll Call:

Ryan Butte
 Juan Delgado
 Beth Hessler
 Kelsy Kime

Also Present: William Arnold

III. PEOPLE TO BE HEARD: None

IV. APPROVAL OF AGENDA:

MOVED BY:	Kelsy Kime	Motion to approve amended agenda.
SECONDED BY:	Beth Hessler	
VOTE ON MOTION	Motion carried by unanimous vote.	

V. APPROVAL OF MINUTES:

A. 07/16/2025 Public Works Committee Meeting Minutes

MOVED BY:	Ryan Butte	Motion to approve meeting minutes for July 18, 2025.
SECONDED BY:	Kelsy Kime	
VOTE ON MOTION	Motion carried by unanimous vote.	

VI. UNFINISHED BUSINESS:

A. Mass Notification for Utility Customers (Butte)

a. City of Bethel website has this notification in place

MOVED BY:	Kelsy Kime	Motion to remove from Agenda.
SECONDED BY:	Juan Delgado	
VOTE ON MOTION	Motion carried by unanimous vote.	

VII. NEW BUSINESS:

VIII. EX OFFICIO MEMBER REPORT

A. IM 25-07 Supporting Docs, City of Bethel Full Financial Budget Report June 2025

B. Manager's Reports August 2025

C. Capital Project Updates

IX. COMMITTEE MEMBER COMMENTS:

R. Butte:

Beth Hessler: EK35 – Ptarmigan to BIA, see if the application has been completed.

J. Delgado:

K. Kimes

X. ADJOURNMENT:

MOVED BY:	Ryan Butte	Motion to adjourn.
SECONDED BY:	Juan Delgado	
VOTE ON MOTION	Motion carried by unanimous vote.	

With no further business, meeting adjourned at 05:58 PM.

APPROVED THIS _____ DAY OF _____, 2025.

Beth Hessler
Committee Interim Chair

Colin Atti
Recorder of Minutes



Yes, chip seal can be applied to gravel roads in Alaska, but it's crucial to ensure the existing gravel surface is properly prepared and stable. Chip sealing over gravel can be a cost-effective way to improve road quality and reduce dust, but it requires a suitable base for long-term success.

Elaboration:

- **Preparation is Key:**

Chip sealing over gravel requires a well-compacted and stable base. This might involve grading the existing gravel surface, removing loose material, and potentially adding a layer of new gravel or crushed stone.

- **Benefits of Chip Seal:**

Chip seal can significantly reduce dust, improve road roughness, and provide a more durable surface than loose gravel.

- **Cost-Effectiveness:**

Chip seal is generally less expensive than repaving with asphalt, making it an attractive option for rural roads and areas with lower traffic volumes, according to the Mat-Su Borough.

- **Durability:**

While not as durable as asphalt, chip seal can last for several years (typically 5-7 years) and can be patched with additional chip seal material when needed, [according to Wikipedia](#).

- **Considerations for Alaska:**


Alaska's climate, with its freeze-thaw cycles and potential for frost heaves, can affect the performance of chip seal. Proper preparation and material selection are essential to ensure long-term success.

- **Alternative to Paving:**

Chip seal can be a viable alternative to traditional asphalt paving, particularly for roads with lower traffic volumes.

- **Professional Installation:**

Chip seal application requires specialized equipment and expertise. It's recommended to consult with a reputable paving contractor experienced in chip sealing on gravel roads.

 [The Case for Chip Sealing](#)

The Case for Chip Sealing

In [Eco-Pave®](#), [Soil Stabilization](#), [Unpaved Roads](#) by Frank Elswick / July 7, 2017

When the maintenance of dirt and gravel country roads becomes a nuisance, chip sealing offers a better, cheaper alternative to paving.

In areas with low-to-mid-level traffic volume that lack properly paved roads, road maintenance creates a year-round issue. With the changing of the seasons come different problems for the roads, from excess levels of dust in the summer and fall to mud and unstable surfaces in the winter and spring. As these areas become increasingly populated and the roads are used more and more, something has to be done to ensure that they're in suitable driving condition throughout all seasons.

While many assume that paving a road is the only way to stabilize it, there is a better and, most importantly for many citizens' budgetary concerns, cheaper way to go about the stabilization process. This alternative is known as chip sealing.

The Chip Sealing Process

[Chip sealing](#) is a process that can be used both as a complement to asphalt paving to extend its shelf life, and as a cost-saving alternative to asphalt that retains elements of the natural state of the road.

After a road is graded, it is stabilized. There are several ways to do this, but the most common one is through the application of hot asphalt. Immediately following the application of asphalt—ideally, within a minute—rock is applied with a chip spreader, so that the rock is embedded by the displacement of the asphalt. After that, a rubber tire-roller takes several passes over the surface to set the rock within the asphalt, and several rounds of sweeping over the next few hours and days removes excess rock from the road surface.

Alternatives to Asphalt

However, the application of hot asphalt is not the only way to chip seal a road. In fact, there are ways to stabilize and chip seal a road that are both more cost effective and environmentally friendly.

Midwest's [SF2® Stabilization](#) system stabilizes roads without asphalt: the system uses a synthetic fluid that contains a special surface soil binder in conjunction with high-tensile synthetic fibers, which fill in discrete voids in the soil matrix to achieve the same results as the asphalt method. The road is stabilized without the pouring of hot asphalt, and all of the products used are certified as safe by the EPA.

Another cost effective and environmentally friendly option for stabilizing roads is Midwest's [GreenPave® system](#). Like the SF2 system, GreenPave utilizes the natural surface of the road in conjunction with Midwest's EcoPave Base, a proprietary polymer-enhanced, resin-based organic emulsion. This process actually creates a longer lasting road surface than asphalt does, and one that has a similar California Bearing Ratio and loading strength.

Midwest's GreenPave

Both of these systems can be used on their own to stabilize a road, but they become even stronger and more stable with the addition of a chip seal. A chip seal using asphalt could be applied to the road, which can certainly strengthen the stabilized base. However, after avoiding the cost and environmental damage of an asphalt seal thus far, applying it at this point wouldn't make sense. For the chip seal, Midwest also provides the best solution.

Midwest's GreenPave system uses our [EcoPave Chip](#) product to deliver the strength and stability of an asphalt chip seal without the laborious multi-step process. The EcoPave Chip is a powerful binder covered with an aggregate that does not require the heating or sweeping process necessary for installing an asphalt chip seal. Not only does the EcoPave Chip shorten the lengthy paving process, but it also creates a better running surface that will resist the damaging heat that black asphalt surfaces absorb. And, as always, the EcoPave Chip is safe for the environment.

The Choice Is Easy

When the time comes to stabilize an out-of-the-way road, chip sealing is typically the best option. Due to their superior value, performance, and low environmental impact, the products and solutions available from [Midwest](#) are far and away the best means of chip sealing available. In short, the choice is easy.

NATURALPAVE ROAD STABILIZATION

Upgrade your unpaved roads to NaturalPave

The environmentally positive road stabilization alternative from the innovators of soil stabilization technology.

Soil Stabilization Overview

Stabilization and Surfacing

Environmental

UPGRADE YOUR GRAVEL ROAD TO NATURALPAVE

Midwest takes a wholistic approach to road stabilization. Often times the base and surface are mistakenly viewed as independent pavement layers. Although both layers serve a unique and different function, their performance and serviceability is very much connected to each other. For instance, a well-constructed surface course is likely to fail prematurely if the base course is not adequately constructed and/or stabilized. The same is true about a well-constructed base course with a poor surface.

Our NaturalPave Road Stabilization is strategically designed to improve the two main components of a roadway: the base and the surface. However, the NaturalPave Base Stabilization does not require surfacing and can act as its own wear course layer when additional surface protection, traction, and wear resistance is not required.

NATURALPAVE BASE STABILIZATION

The base course is the most important pavement layer and provides the structural foundation for the roadway. Its main function of the base course is to improve the load bearing strength of the road by distributing the traffic loads, resisting deformation, and facilitating drainage. Traditional construction practices involve importing and laying specific base course aggregates prior to installing the surface course. However, Midwest's NaturalPave Base Stabilization stabilizes the existing onsite aggregate, broken pavements or native soils - eliminating the need and costs associated to importing new aggregate. If installing new aggregate is desired, often the design thickness of the stabilized base layer can be dramatically reduced compared to traditional design thicknesses.

Installing Midwest's NaturalPave Base Stabilization into the native in-situ soil or existing reworked base course creates a durable foundation that will support the most demanding traffic loads without premature surface failures resulting from insufficient base strength. This significantly reduces the required maintenance and ensures that the surface course and road remains in good functional condition for much longer.

In addition to the strength improvements achieved, the treated material is free of dust. When exploring traditional surfacing options, this allows for stronger and more uniform adhesion of the surface course to base course, often eliminating the need for a prime coat.

Consider the benefits of NaturalPave Base Stabilization:

- Eliminates the need to crush, transport and install base aggregate
- Eliminates the need to install a sub-base
- Eliminates subgrade preparation and improvement
- Supports the most extreme traffic demands
- Increases the CBR on the base
- Performance not impacted by freeze/thaw cycles
- Reduces the required surface course thickness

- Extends the service life and preserve the road's infrastructure longer than conventional methods
- Reduces equipment, labor and the overall cost of the road
- Can be installed in a wider range of temperatures compared to conventional methods
- Eliminates the need to wash aggregate as required with conventional methods



**NATURALPAVE
SURFACE**

The surface course layer's primary function is to provide a quality, smooth ride, and a skid-resistant surface with adequate friction and drainage. The surface course typically consists of smaller aggregate with an increased fines content to help keep the surface densely bound to resist erosion and deterioration. Often without stabilization the surface course can quickly deteriorate creating safety issues that require frequent maintenance.

Quality surface course aggregate conforming to the gradation and specification required to perform at a high level is hard to acquire in many cases. Asphalt surface courses are costly to install and require specialized maintenance throughout the pavement's life. NaturalPave Surface eliminates the need to install hard-to-find and costly surfacing materials.

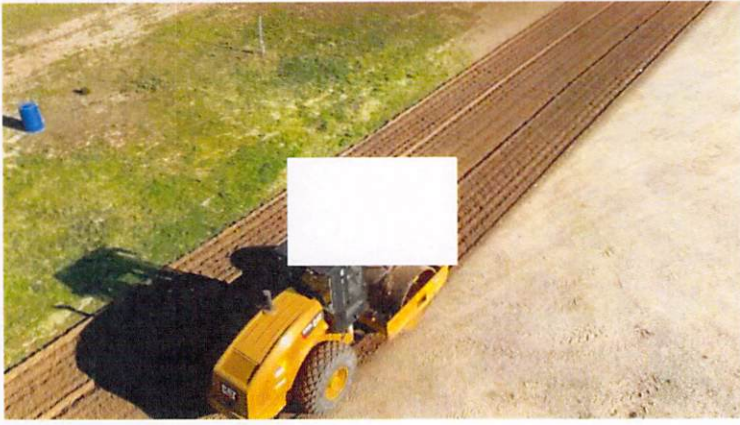
Midwest's NaturalPave Surface protects the base course by preventing surface deterioration such as erosion and raveling in addition to stopping harmful moisture from penetrating into and weakening the base. This reduction of moisture penetration greatly extends the performance life of the base material, especially in areas prone to freeze-thaw cycles. From a cost savings perspective, NaturalPave Surface will dramatically reduce maintenance, improve the overall performance life, and prevent the loss of aggregate and fines.

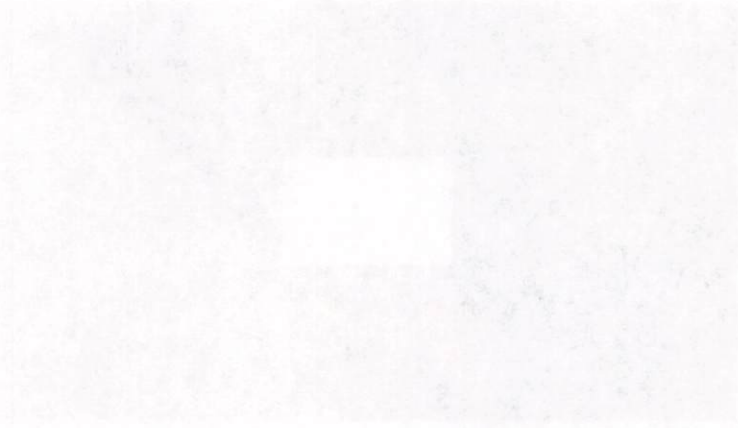
Most importantly, NaturalPave Surface increases driver safety by creating a dust-free, bound surface with good skid resistance.

Consider the benefits of NaturalPave Surface:

- Eliminates the need to crush, transport and install surfacing materials
- Protects the base course
- Provides a skid resistant surface
- Reduces maintenance activities
- Resists surface deterioration and erosion
- Prevents the loss of aggregate and fines from the surface
- Increases the CBR of the surface course
- Reduces the required surface course thickness
- Extends the service life and preserves the road's infrastructure longer than conventional methods
- Reduces equipment, labor, and the overall cost of the road
- Can be installed in a wider range of temperatures compared to conventional methods

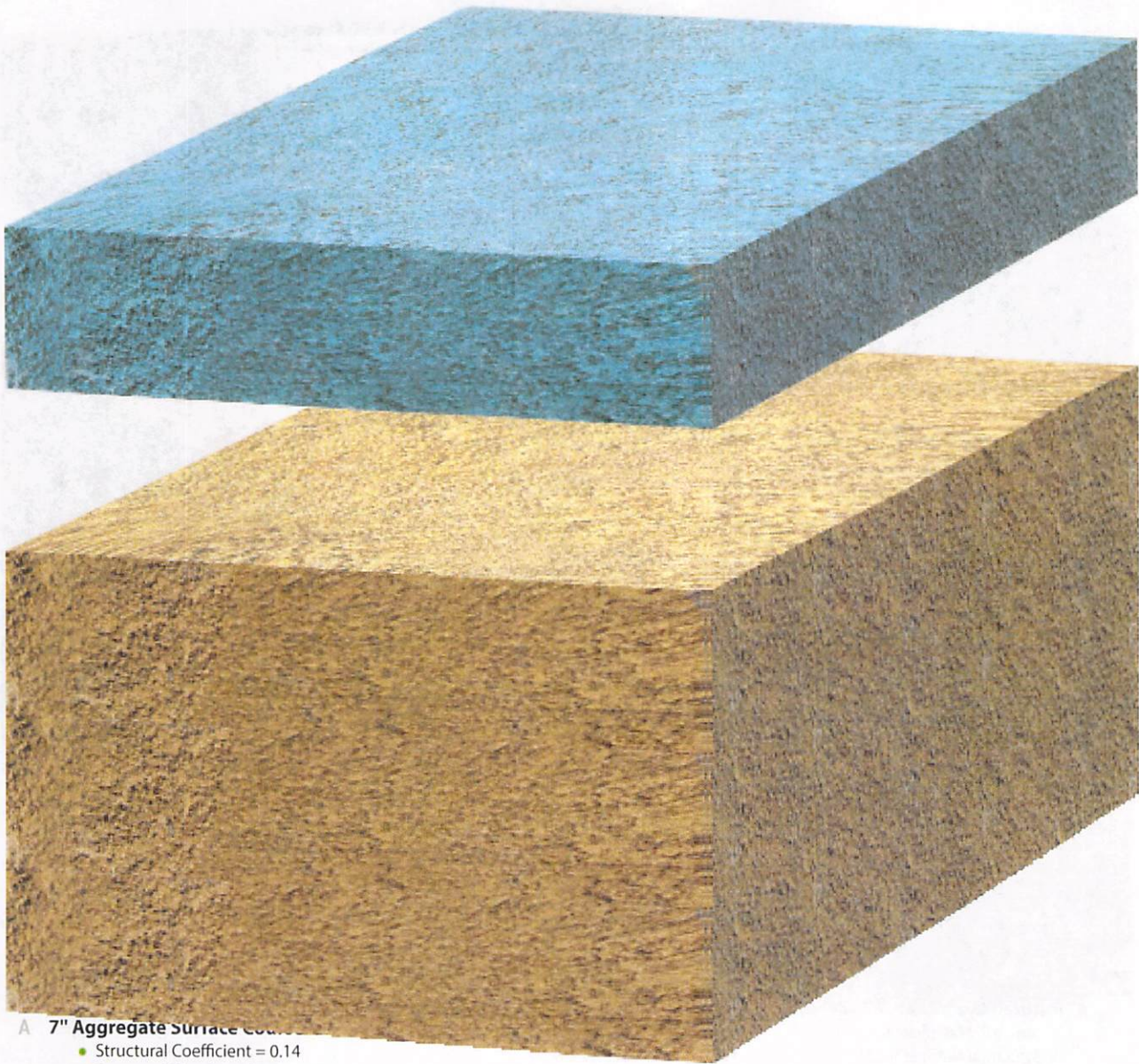
From unpaved roads to architectural/design surfaces and marginal soils, the Midwest Unpaved Roads Plan has a solution for you.





**NATURALPAVE COMPARISON: IMPORTED AGGREGATE VS
NATURALPAVE ROAD STABILIZATION USING IN-SITU SOILS**

Traditional Design #1: Total Structure Number for Pavement = 0.98



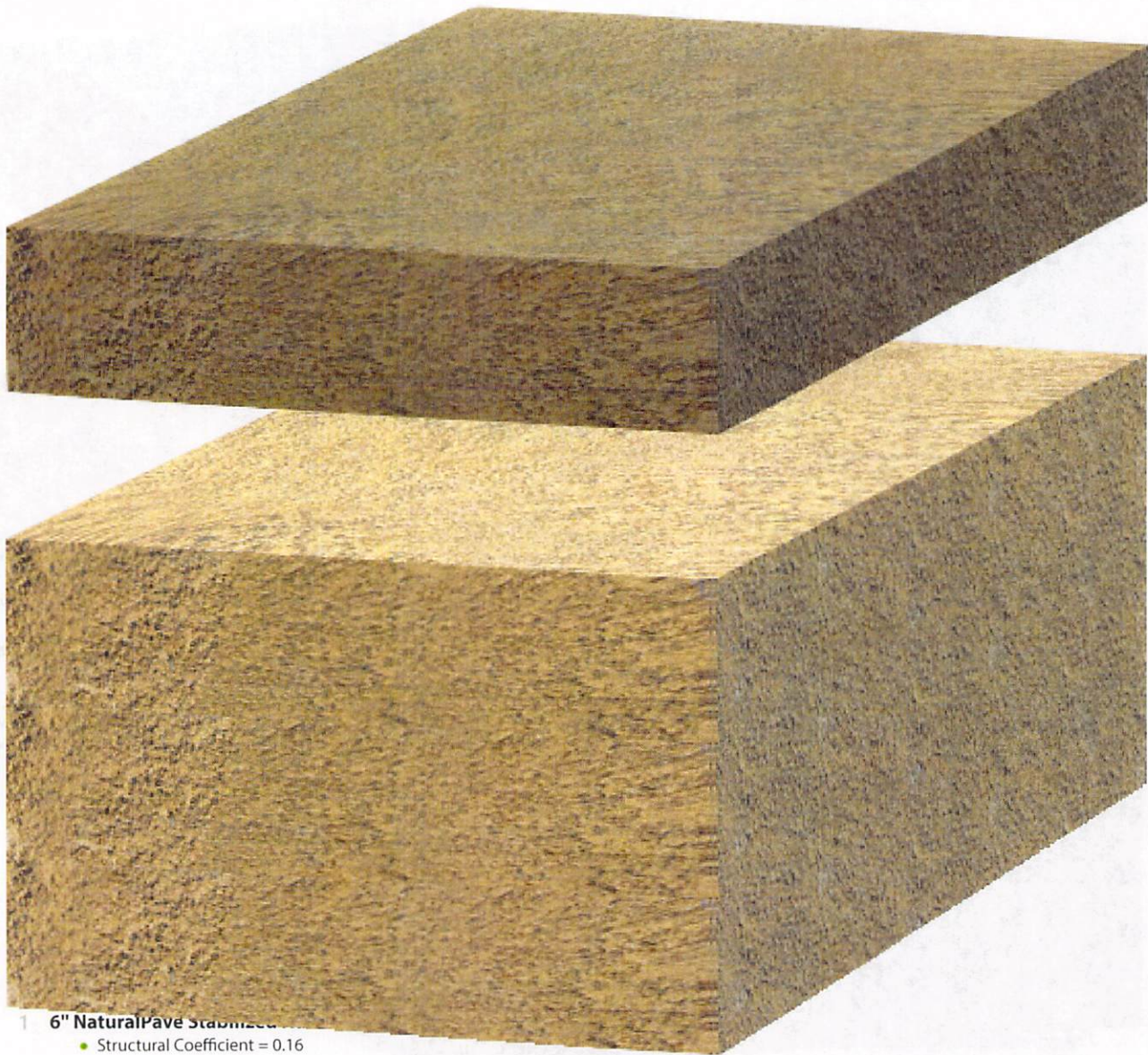
A 7" Aggregate Surface Course

- Structural Coefficient = 0.14
- Structural Number = 0.98

B Native Soil Subgrade

- Natural Structural Strength

Midwest's NaturalPave Design #1: Total Structural Number for Pavement = 0.96



- 1 **6" NaturalPave Stabilized**
 - Structural Coefficient = 0.16
 - Structural Number = 0.96

- 2 **Native Soil Subgrade**
 - Native Structural Strength

*Comparison hypotheticals are for illustration purposes only. Each installation will require site-specific materials and requirements. Overall cost savings will vary.

Up to a 40% reduction in installation cost with NaturalPave

NATURALPAVE COMPARISON: TRADITIONAL PAVEMENT VS NATURALPAVE ROAD STABILIZATION

Traditional Design #2: Total Structural Number for Pavement = 2.13



A 3" Hot Mix Asphalt Surface Course

- Structural Coefficient = 0.43
- Structural Number = 1.29

B 6" Aggregate Base Course

- Structural Coefficient = 0.14
- Structural Number = 0.84

C Native Soil Subgrade

- Native Structural Strength

Midwest's NaturalPave Design #2: Total Structural Number for Pavement = 2.16



- 1 **6" NaturalPave Stabilized Base**
 - Structural Coefficient = 0.20
 - Structural Number = 1.20

- 2 **6" NaturalPave Stabilized Native Soil**

- Structural Coefficient = 0.16
- Structural Number = 0.96

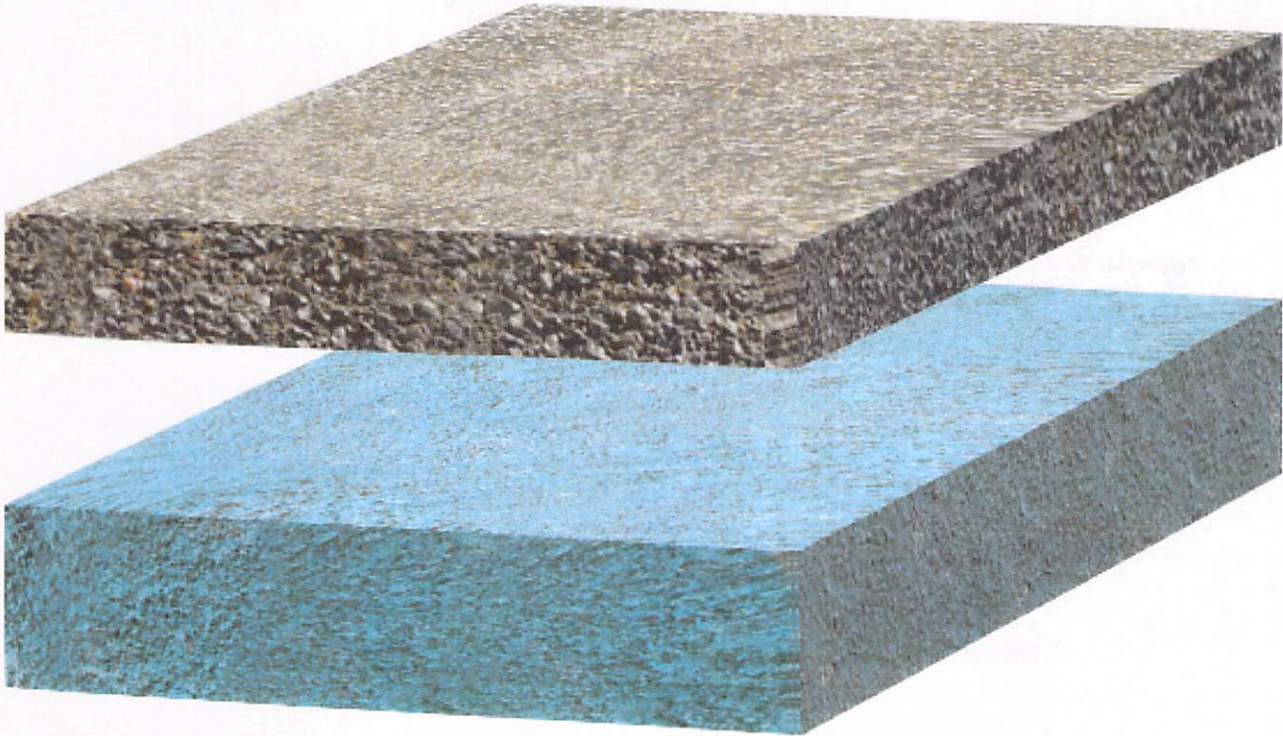
- 3 **Native Soil Subgrade**
 - Native Structural Strength

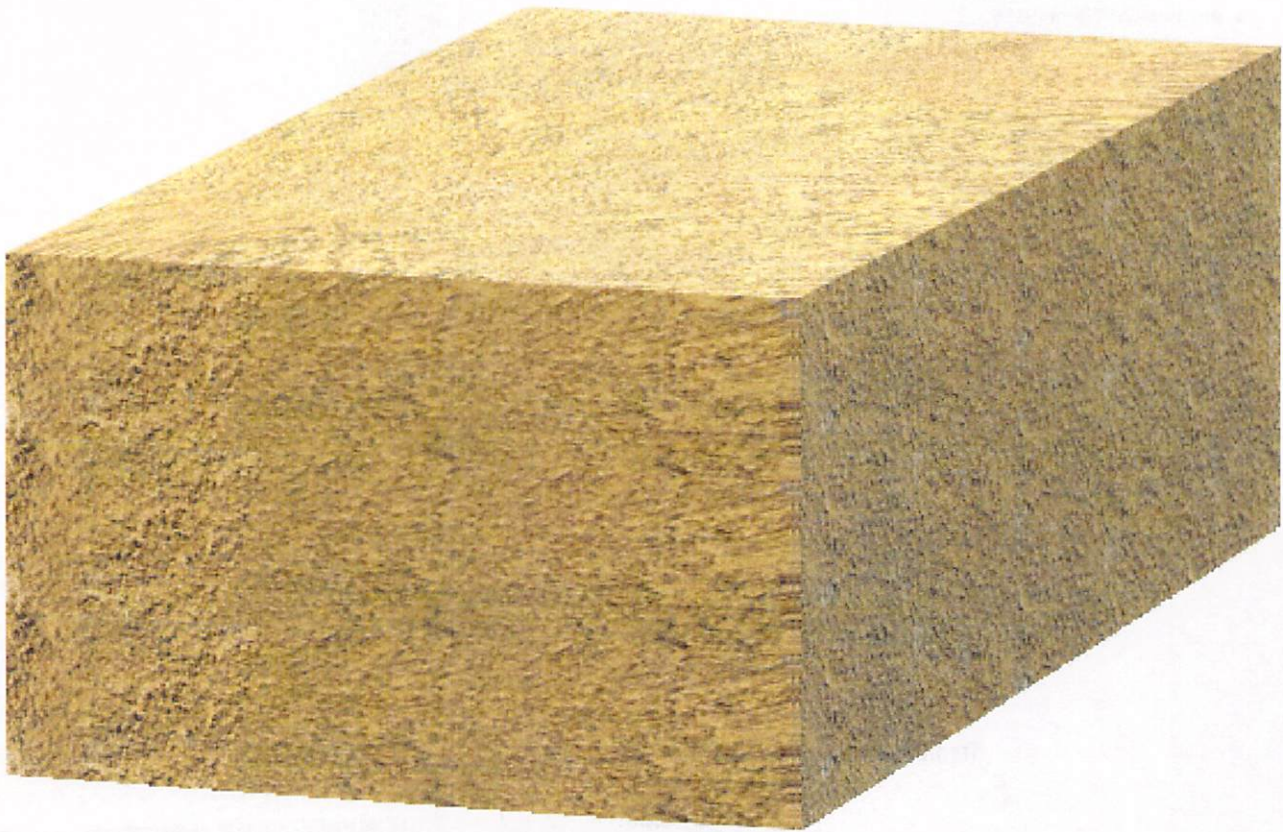
*Comparison hypotheticals are for illustration purposes only. Each installation will require site-specific materials and requirements. Overall cost savings will vary.

Up to a 65% reduction in installation cost with NaturalPave

NATURALPAVE COMPARISON: TRADITIONAL PAVEMENT VS NATURALPAVE ROAD STABILIZATION WITH SURFACING

Traditional Design #3: Total Structural Number for Pavement = 1.70





A 2" Hot Mix Asphalt Surface Course

- Structural Coefficient = 0.43
- Structural Number = 0.86

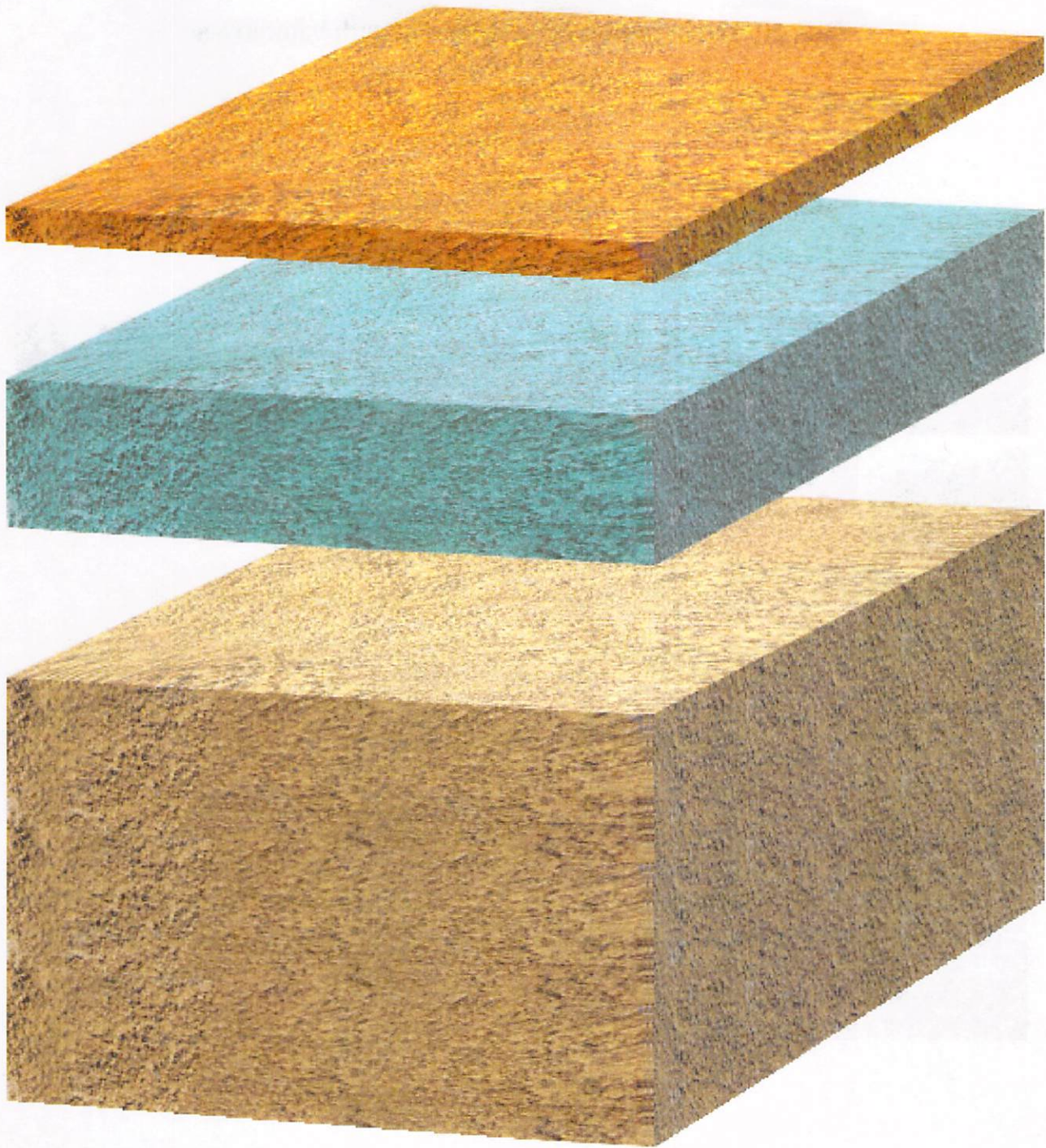
B 6" Aggregate Base Course

- Structural Coefficient = 0.14
- Structural Number = 0.84

C Native Soil Subgrade

- Native Structural Strength

Midwest's NaturalPave Design #3: Total Structural Number for Pavement = 1.76



- 1 **NaturalPave Surface**
 - Structural Coefficient = 0.00
 - Structural Number = 0.00

- 2 **8" NaturalPave Stabilized Base**
 - Structural Coefficient = 0.22
 - Structural Number = 1.76

- 3 **Native Soil Subgrade**
 - Native Structural Strength

*Comparison hypotheticals are for illustration purposes only. Each installation will require site-specific materials and requirements. Overall cost savings will vary.

Up to a 70% reduction in installation cost with NaturalPave

THE MIDWEST UNPAVED ROADS PLAN IN ACTION

Senegal, Africa – Stabilized Six (6) Kilometers of Village Road



Santa Maria Event Center - Two (2) Miles of Road



Santa Ynez CA Vineyard - Six (6) Miles of Road Stabilization





Ft. Collins CO County Road - Two (2) Miles of Road Stabilization



Castions di Strada, Italy – 55 Kilometers of Road Stabilization



Los Alamos, CA – Stabilized Road + Embedded Aggregate Surface



Los Olivos, CA – Stabilized Nine (9) Miles of Road



THE MIDWEST UNPAVED ROADS PLAN IS A BETTER WAY.

Like nature ... only better.

There's been asphalt and there's been gravel. Now, you have the Midwest Unpaved Roads Plan, a way that's superior and more natural than century-old methods. Midwest NaturalPave engineered, eco-friendly natural paving solutions outperform any semi-permanent method — lasting longer, saving money, and protecting the environment.

FILL OUT THE FORM BELOW TO DISCOVER THE THIRD WAY.

First Name
Last Name
Company Name
Description of Project
Phone Number
Email Address
State, Province or Region of Project (2-digit code)
Please classify your project: ▼

Submit

I'm not a robot

reCAPTCHA
Privacy - Terms

Chapter 13.04

WATER SERVICE

Sections:

- 13.04.010** Definitions.
- 13.04.020** Area of service.
- 13.04.025** Mandatory application.
- 13.04.030** Connection to proximate main required.
- 13.04.040** Segregation of private water supply.
- 13.04.050** Service continuity and quality.
- 13.04.060** Ownership of facilities.
- 13.04.070** Classes of service.
- 13.04.080** Resale of water.
- 13.04.085** Sale of metered water in bulk.
- 13.04.090** Preference during shortage.
- 13.04.100** Application for service.
- 13.04.110** Credit establishment – Deposits.
- 13.04.120** Service changes.
- 13.04.130** Mains and connections.
- 13.04.140** Water extension.
- 13.04.150** Service connection – Charge.
- 13.04.160** Service connection – Procedure.
- 13.04.170** Multiple service on one (1) extension.
- 13.04.175** Service to multi-dwelling units.
- 13.04.180** Holding tank service.
- 13.04.190** Fire protection service.
- 13.04.200** Temporary service.
- 13.04.210** Customer’s plumbing.
- 13.04.220** Control valve.
- 13.04.230** Commercial service meters.
- 13.04.240** Rates.
- 13.04.250** Notices.
- 13.04.260** Billing.
- 13.04.270** Delinquent accounts.
- 13.04.280** Shutoff – By request.
- 13.04.290** Shutoff – Nonpayment of charges.
- 13.04.300** Shutoff – Improper plumbing.

- 13.04.305 Access for water delivery.**
- 13.04.310 Shutoff – Waste or noncompliance.**
- 13.04.320 Access for inspection.**
- 13.04.330 Liability of city and customer.**
- 13.04.340 Fire hydrants.**
- 13.04.350 Easement and right-of-way.**
- 13.04.360 Experiments and innovations.**
- 13.04.370 Suspension of provisions.**
- 13.04.380 Administration and enforcement.**
- 13.04.390 Violation – Penalty.**

13.04.010 Definitions.

As used in this chapter:

- A. “Applicant” means the person or persons, firm or corporation or other entity making application for water service from the finance department under the terms of this chapter.
- B. “Customer” means an applicant whose application has been accepted by the finance department.
- C. “Department” means the city public works department.
- D. “Multi-dwelling unit” means premises that contain three (3) or more dwelling units, including apartment complexes and trailer courts.
- E. “Property owner” means the legal owner of a property where utility services are being provided by the city of Bethel.
- F. “Water connection” means that part of the water distribution system connecting the water main with the lot line of the property being furnished the water service or with the lot line of the nearest property abutting the water main if the water connection must first (1st) cross this abutting property to reach the property being served.
- G. “Water extension” means that part of the water distribution system extending from the water connection into the premises served.
- H. “Water main” means that part of the water distribution system intended to serve more than one (1) water connection. [Ord. 14-08 § 2; prior code § 11.04.010.]

13.04.020 Area of service.

The water service area shall be such area within the city and such nearby territory as the council from time to time includes within the water service area by resolution. [Ord. 14-08 § 2; prior code § 11.04.020(1).]

13.04.025 Mandatory application.

Each location within the city of Bethel shall have a signed application for water services on file at the city of Bethel. Property owners may apply for exemptions from service to the finance department. Such exemptions will not be unreasonably denied if the customer can demonstrate:

- A. Water is being obtained from an alternate and reliable water source, such as a well, and no contamination of the ground in or around the home is occurring as a result of the alternate water source; or
- B. That the home is vacant and/or under construction (in such case the exemption shall be temporary); or
- C. Other reasons which in the sole discretion of the public works department reasonably justify an exemption. [Ord. 14-08 § 2.]

13.04.030 Connection to proximate main required.

Upon completion of construction of a water main in front of, alongside of, or adjacent to improved property in an area, the department shall publish a notice that the water service is available to serve inhabitants of that area who shall make application for service or connect to the system within one (1) year after the date of the published notice. Should the owner of improved property fail to do so, a charge shall be made each month until connection is made. This charge shall be equal to the monthly minimum for the type of service that would be furnished were water service supplied. The charge will be levied upon and collected in the same manner as an assessment for the improved property. [Ord. 14-08 § 2; prior code § 11.04.020(2).]

13.04.040 Segregation of private water supply.

When water service has been provided for improved property, all wells and springs on such property shall be completely segregated from the city water system. [Ord. 14-08 § 2; prior code § 11.04.020(3).]

13.04.050 Service continuity and quality.

- A. *Supply.*

1. Water service shall be provided by the department, which shall exercise reasonable diligence and care to deliver a continuous and sufficient supply of water to customers in adequate pressure and to avoid, insofar as reasonably possible, any shortage or interruption in delivery.

2. The city shall not be liable for damage resulting from interruption in service or lack of service. Temporary suspension of service by the department for improvements and repairs may be necessary. Whenever possible, and when time permits, all customers affected by such suspension will be notified prior thereto by notice through news media or otherwise.

B. *Quality.* The department will exercise reasonable diligence to supply safe and potable water at all times. [Ord. 14-08 § 2; prior code § 11.04.030(1), (2).]

13.04.060 Ownership of facilities.

All water mains, water connections, valves, fittings, hydrants and other appurtenances, except water extension lines, shall be the property of the city. [Ord. 14-08 § 2; prior code § 11.04.030(3).]

13.04.070 Classes of service.

The classes of service shall be residential or commercial.

A. Residential services shall consist of all services where water is supplied for domestic purposes to a single-family dwelling unit.

B. Commercial services shall consist of all services where water is supplied for a commercial or business establishment, or multi-dwelling units.

C. If water is supplied to a customer for use in both a single-family dwelling unit and a business establishment, the rate for commercial services shall apply for the combined usage. [Ord. 14-08 § 2; prior code § 11.04.030(4).]

13.04.080 Resale of water.

Resale of water shall be permitted only pursuant to written contract between the council and the party proposing to sell water. Only water purchased from the city of Bethel or prepackaged water may be resold within the city limits. [Ord. 14-08 § 2; prior code § 11.04.030(5).]

13.04.085 Sale of metered water in bulk.

Resale of metered water in quantities of one hundred (100) gallons or more per fill is permitted only pursuant to a written contract executed between the city and the party proposing to buy water in bulk. The city is authorized to enter into such contracts on behalf of the city. [Ord. 14-08 § 2; Ord. 01-38 § 2.]

13.04.090 Preference during shortage.

In case of a water shortage, the department may give preferences to customers as public convenience or necessity requires. Water service to customers outside the city shall at all times be subject to the prior superior rights of the customers within the city. [Ord. 14-08 § 2; prior code § 11.04.030(6).]

13.04.100 Application for service.

Each applicant for water service shall sign an application form provided by the city finance office, giving the date of application, location of the premises to be served, the date applicant desires services to begin, class of service, the address for mailing bills, the size of fill required, and such other information as the finance department may reasonably require. By signing the application, the applicant agrees to abide by this chapter and all resolutions or regulations promulgated under this chapter and the applicant agrees to have placed in an approved location a number which conforms to the street numbering system of the city. The application is a request for service and does not require the city to furnish service. [Ord. 14-08 § 2; prior code § 11.04.040(1).]

13.04.110 Credit establishment – Deposits.

At the time application for service is made, the applicant shall establish credit with the finance department.

- A. *Establishment of Credit.* A water utility deposit will be required if the applicant has no previous credit history with the finance department. A deposit equal to two (2) months' service, but not less than two hundred dollars (\$200), shall be required. Credit history will be based upon an applicant's past utility payment record and a deposit will not be required if it is determined that the applicant has not been delinquent more than once in the applicant's most recent twelve- (12-) month period. The deposit is refundable after two (2) years of timely payments. The deposit will be waived by receipt of a recent letter of good payment history from another utility company.
- B. *Deposits.* No service shall be furnished until the deposit is made with the finance department. The deposit is not a payment on account. In the event water service is discontinued, the deposit will be applied to the closing bill, and any amount in excess of the closing bill will be refunded to the applicant.
- C. *Application of Deposit.* If a customer's account becomes delinquent and service is discontinued, the deposit shall be applied to the unpaid balance.

D. *Resumption of Services.* Water service shall not be restored to the customer at any premises in which the customer resides within the city until:

1. All outstanding water bills due to the city from the customer have been paid;
2. The cash deposit is replaced in an amount equal to the customer's estimated bill for two (2) months' service; and
3. A restoration service fee of thirty-five dollars (\$35) or the actual restoration cost, whichever is greater, has been paid. [Amended during 8/14 supplement; Ord. 14-08 § 2; Amds. 10 and 12, § 1 to Ord. 85; prior code § 11.04.040(2).]

13.04.120 Service changes.

A. *Increased Level of Service for Hauled Customer.* Existing customers in good standing may increase their level of service without an additional deposit due providing the original deposit equals two (2) months of service. Customers who are not in good standing shall be required to pay all outstanding balances before an increased level of service will be provided.

B. *Decreased Level of Service for Hauled Customers.* Existing customers may decrease their level of service. A reduction in deposit will not be given.

C. *Fees for Changes in Level of Service for Hauled Customers.*

1. Two (2) changes in level of service per calendar year shall be allowed to a customer in good standing at no charge. Thereafter, a fee of twenty-five dollars (\$25) will be due for any additional changes made. Customers not in good standing will be required to pay twenty-five dollars (\$25) for each change in level of service.

D. *Fees for Temporary Disconnect and Reconnect.*

1. Piped customers will be assessed actual costs for each temporary disconnect/reconnect as identified in the city of Bethel fee and rate schedule. [Ord. 14-08 § 2; Ord. 09-13 § 2; Ord. 02-31 § 2; Amd. 10 to Ord. 85; prior code § 11.04.040(3).]

13.04.130 Mains and connections.

A. *Within the City.* Water mains to areas within the city not presently served with water shall be installed only upon authorization of the council.

B. *Outside the City.* Water mains outside the city shall be installed only at the expense of the customers served.

C. *Ownership.* All water mains and water connections, whether within or outside the city, shall be the property of the city, and shall be installed by the department or the applicants, in accordance with plans and specifications approved by the department.

D. *Location.* All water mains and water connections shall be on rights-of-way, easements or public property. All easements or right-of-way permits secured for water mains and water connections shall be obtained in the name of the city. [Ord. 14-08 § 2; prior code § 11.04.050.]

13.04.140 Water extension.

The water extension shall be owned, installed and maintained by the applicant for water service. [Ord. 14-08 § 2; prior code § 11.04.060(1).]

13.04.150 Service connection – Charge.

At the time the applicant files for water service where service has previously existed, or if the applicant is filing for a change in service class, size or location, the applicant shall submit with their application a service connection charge which will cover the actual cost to the department of the connection, plus twenty-five (25) percent. [Ord. 14-08 § 2; prior code § 11.04.060(2).]

13.04.160 Service connection – Procedure.

Regulations, orders or procedures governing the installation of water extensions shall be promulgated by the department, subject to approval of the council by resolution. All water extensions and repairs, modifications or disconnections thereof shall be made only on the terms and conditions set forth in the Uniform Plumbing Code (current edition) and such further regulations, orders or procedures as the council may approve. [Ord. 14-08 § 2; prior code § 11.04.060(3).]

13.04.170 Multiple service on one (1) extension.

A. The department may, at its option, serve two (2) or more premises or customers with one (1) water extension connection; provided, that such joint service water extension lines shall be of such a size as to provide a capacity of not less than the combined capacity of the individual water extension lines. No water extension service shall be permitted to other customers except that under written contract approved by council.

B. The owner of a single parcel of property may apply for and receive as many connections as they and their tenants may require, provided their application or applications meet the requirements of this chapter. [Ord. 14-08 § 2; prior code § 11.04.060 (4), (5).]

13.04.175 Service to multi-dwelling units.

Service and billing to multi-dwelling units where there is only one (1) connection or one (1) holding tank will be the sole responsibility of the property owner. [Ord. 14-08 § 2.]

13.04.180 Holding tank service.

Customers to whom a water main is not available may have water delivered to their properties for discharge into holding tanks; provided, that the location, type of holding tank and access thereto are approved by the department. Quantity and frequency of delivery shall be determined by regulations or orders of the department and approved by the council, and the rate charged for such delivery shall be determined by the council by ordinance. In new home construction, the minimum water holding tank size shall be determined by the chart below:

Number of Bedrooms	Water Tank Size
Studio 300 sq. ft. or less	300 gallons
Studio more than 300 sq. ft.	400 gallons
One bedroom	500 gallons
Two bedrooms	700 gallons
Three bedrooms	900 gallons
Four or more bedrooms	1,000 gallons

“New home construction” is defined as all new homes where the site permit is approved after April 30, 2019. [Ord. 19-03 § 2; Ord. 14-08 § 2; Sub. Ord. 05-08 § 2; prior code § 11.04.060(6).]

13.04.190 Fire protection service.

A customer having fire protection facilities on the premises or who uses water for other purposes through the same water extension connection shall be charged at the applicable rate for that customer’s class of service, regardless of such other use. [Ord. 14-08 § 2; prior code § 11.04.060(7).]

13.04.200 Temporary service.

Temporary water extensions and water connections may be provided by the department for a period not to exceed six (6) months, unless an extension is granted by the department. Costs of connection, deposits, charges for installation and removal of equipment shall be established by the department, subject to approval by the council by ordinance. [Ord. 14-08 § 2; prior code § 11.04.060(8).]

13.04.210 Customer's plumbing.

The customer's plumbing, which shall include the water extension lines and all plumbing, piping, fixtures and other appurtenances carrying or intended to carry water on property owned or controlled by the customer between the water system and the home, shall comply with Uniform Plumbing Code (current edition). [Ord. 14-08 § 2; prior code § 11.04.060(9)(a).]

13.04.220 Control valve.

Customers shall install a suitable control valve in the water extension line at a location approved by the department, the operation of which valve will control the entire water supply to the premises served. It will be a violation of this chapter for the customer to operate, cause or permit unauthorized operation of the control valve, except in the case of emergencies. [Ord. 14-08 § 2; prior code § 11.04.060(9)(b).]

13.04.230 Commercial service meters.

- A. *Requirement.* The department may require installation of a water meter at the customer's expense for any commercial service.
- B. *Location.* Meters shall be placed in a location approved by the department.
- C. *Joint Use.* Meters cannot be used by more than one (1) customer except as provided by written contract with the city. [Ord. 14-08 § 2; prior code § 11.04.070.]

13.04.240 Rates.

The city manager or the council may introduce an ordinance to increase or decrease the water rates in order to charge reasonable water rates. [Ord. 14-08 § 2; Ord. 04-24 § 3; prior code § 11.04.080.]

13.04.250 Notices.

- A. *To Customers.* Notices from the department to a customer will normally be given in writing, and either mailed to or delivered to the customer at their last known address. Where conditions warrant and during emergencies, the department may notify the customer either by telephone or messenger.
- B. *From Customers.* Notices from customers to the department shall be given by the customer in writing on a city utility form to the utility/finance office or to the utility services foreman of the department duly authorized to receive notices or complaints.

C. *Discontinuance for Repairs.* Notices from the department to a customer providing for the discontinuance of service for the purpose of repairs shall be given to a customer in writing twenty-four (24) hours prior to such discontinuance, except in the case of emergencies. [Ord. 14-08 § 2; Ord. 02-10 § 2; prior code § 11.04.090.]

13.04.260 Billing.

- A. All bills shall be mailed on or before the fifth (5th) day of each month.
- B. Each bill entered shall be due upon receipt. If the bill is not paid by the twenty-fifth (25th) day of the month in which mailed, or twenty (20) days after the date the bill is mailed, whichever is later, the account shall be considered delinquent.
- C. If the date upon which a bill would be considered delinquent falls on a day that the city does not conduct business, the bill will become delinquent at the end of the next day that the city conducts business.
- D. Payments sent by mail and postmarked on or before the day that a bill would be considered delinquent will not be considered delinquent.
- E. Allowances for late payments from circumstances that delay normal payment of bills and delays in the mail such as bad weather, volcanic eruptions or national emergencies can be made by appropriate city staff.
- F. Customers shall have ninety (90) days beyond the current payment due date for any corrections or adjustments. [Ord. 14-08 § 2; Ord. 09-13 § 2; Ord. 02-10 § 3; Ord. 93-38 § 4; Amd. 10 to Ord. 85; prior code § 11.04.100(1), (2).]

13.04.270 Delinquent accounts.

- A. The finance department shall send a notice of account delinquency to each customer when the account becomes delinquent.
- B. Within fifteen (15) days after an account becomes delinquent, water may be turned off if the delinquent account is not paid in full prior thereto.
- C. Prior to shutoff of delinquent accounts, the finance department will send a notice of shutoff giving a final date due for payment. If the customer is not the property owner, a copy of the shutoff notice will be sent to the property owner as well.
- D. A nonsufficient funds (NSF) check is not payment on your account. Should the city receive a NSF check for payment of an account on the shutoff list, water service will be terminated with no further notice from the city. In addition to the turn-off and turn-on fees, and all past due amounts, a thirty dollar (\$30.00) NSF fee will be required to be paid in certified funds or cash before sewer service will be restored.
- E. On the turn-off date, any agent of the department or city may turn off the water service.

F. Interest on delinquent accounts shall be paid at the rate of fifteen (15) percent per annum. Delinquent payments, with interest, shall constitute a lien on the real property where the account is delinquent.

G. The city has the authority to collect from the delinquent customer all expenses that relate to the collection effort including: (1) cost of collection; (2) attorney's fees; (3) recorder's fees; (4) court costs. [Ord. 14-08 § 2; Ord. 95-24 § 4; Amd. 10 to Ord. 85; Ord. 170, 1986; prior code § 11.04.100(3).]

13.04.280 Shutoff – By request.

Each customer shall give the department written notice of their intention to discontinue water service at least two (2) days prior to the date they wish water service discontinued, and shall specify the date service is to be discontinued; otherwise, the customer will be responsible for all water supplied to the premises until the department receives notice of such discontinuance. Upon discontinuance of water service, a bill shall be rendered and such bill shall be payable immediately. In no case will the bill be less than the monthly minimum specified in the current water rate schedule for the class or classes of water service theretofore furnished. [Ord. 14-08 § 2; prior code § 11.04.110(1).]

13.04.290 Shutoff – Nonpayment of charges.

If water service charges are not paid when due by any person, firm, corporation or other entity whose premises are served by water service, then the water service provided to that customer may be discontinued because of the default in the payment of the water service charges. [Ord. 14-08 § 2; prior code § 11.04.110(2).]

13.04.300 Shutoff – Improper plumbing.

A. The department may refuse to furnish water and may discontinue water service to any premises without prior notice where plumbing facilities, appliances or equipment using water are dangerous, unsafe or not in conformity with the plumbing regulations of the city.

B. No physical connection between the water service system and any other water source shall be permitted, and the department may discontinue services to any persons or premises where a cross-connection exists without notice.

C. The city shall not be held liable for water damage to any property where the customer has failed to install adequate operative water tanks.

D. The city shall not be held liable for water damage where the customer has failed to install an adequate operative overflow system or has failed to keep the overflow line properly cleared and maintained. [Ord. 14-08 § 2; prior code § 11.04.110(3).]

13.04.305 Access for water delivery.

- A. Customers are responsible for maintaining their driveways clear and accessible on dates of scheduled and requested water deliveries.
- B. The city will not be responsible for providing services to an address if the driveway is not accessible. This includes any obstruction (such as, but not limited to, parked vehicles, freezer vans, snow, ice, animals, wastes, toys, appliances, snowmobiles, etc.).
- C. If the overflows are frozen and the city does not have access to the water tank, the city will not be responsible for filling the tank.
- D. If service cannot be completed due to the circumstances described in this section, the city will leave a blue tag at the customer's home advising of the problem in sufficient detail to allow the customer an opportunity to address the issue before the next regularly scheduled delivery.
- E. A credit for service will not be given for missed services that result from customer's actions. [Ord. 14-08 § 2.]

13.04.310 Shutoff – Waste or noncompliance.

The department may discontinue service to any customer, upon five (5) days' written notice, for any of the following reasons:

- A. Wasteful or negligent use of water;
- B. Excessive use of water resulting in inadequate service to other customers;
- C. Fraud or abuse by the customer. [Ord. 14-08 § 2; prior code § 11.04.110(4).]

13.04.320 Access for inspection.

Employees of the department shall have free access at all reasonable hours to any and all parts and structures of the premises in which water is or may be delivered for the purposes of inspecting connections, the conditions of the conduits and fixtures, and the manner and extent to which the water is being used. The department does not, however, assume the duty of inspecting the water extension line or the customer's plumbing and equipment. [Ord. 14-08 § 2; prior code § 11.04.120.]

13.04.330 Liability of city and customer.

The city shall not be liable for any loss or damage of any nature whatsoever caused by any defect in the water extension line or the customer's plumbing or equipment, nor shall the city be liable for loss or damage due to

interruption of service or changes in pressure. The customer shall be responsible for valves on their premises being turned off when the water service is turned on. [Ord. 14-08 § 2; prior code § 11.04.130.]

13.04.340 Fire hydrants.

- A. *Operation.* No person or persons other than those designated and authorized by the department shall open any fire hydrant belonging to the city, attempt to draw water from it or in any manner damage or tamper with it.
- B. *Damage.* Any person who damages a fire hydrant shall be responsible for its complete repair and return to service. Any person damaging the fire hydrant shall be subject to penalties provided for in this chapter or in law.
- C. *Moving.* Any party desiring to change the size, type or location of a fire hydrant shall bear all costs of such changes. Any changes in the size, type or location of a fire hydrant shall be approved by the department and by the city fire department. [Ord. 14-08 § 2; prior code § 11.04.140.]

13.04.350 Easement and right-of-way.

Each applicant and customer gives and grants to the city an easement and right-of-way on and across their property for the installation of water connections, water extensions and water mains and the necessary valves and equipment used in connection therewith. [Ord. 14-08 § 2; prior code § 11.04.180.]

13.04.360 Experiments and innovations.

Nothing in this chapter shall be construed to prohibit the use of experimental and/or innovative processes or procedures for water service. The operation of such device, process or procedure shall have the prior approval of the city council. The committee shall approve all such devices, processes and procedures that are not in conflict with the health and welfare of the city. Applications for approval of such devices, processes and procedures shall be made to the public works director and appeal from a decision of the public works committee shall be to the council. [Ord. 14-08 § 2; prior code § 11.04.190.]

13.04.370 Suspension of provisions.

No employee of the department is authorized to suspend or alter any of the provisions hereof without specific approval or direction of the city council, except in cases of emergency involving a danger of loss of life or property or which would place the water system operation in jeopardy. [Ord. 14-08 § 2; prior code § 11.04.170.]

13.04.380 Administration and enforcement.

This chapter shall be administered and enforced by the city manager. The city council shall have the authority to establish and regulate monthly rates for water service pursuant to AS [29.48](#). All rates and other charges adopted by the council shall be by ordinance and available for public inspection during regular business hours at the office of the city clerk. All moneys collected for water services will be separately accounted for by the city finance director and used for such purposes and disbursed by the council as it deems appropriate. The city council may adopt such additional regulations, resolutions, orders, provisions and procedures pertaining to water service as it deems proper. [Ord. 14-08 § 2; prior code § 11.04.150.]

13.04.390 Violation – Penalty.

Any person violating any of the provisions of this chapter is guilty of an infraction and shall be fined three hundred dollars (\$300). [Ord. 14-08 § 2; prior code § 11.04.160.]

The Bethel Municipal Code is current through Ordinance 25-15, passed August 26, 2025.

Disclaimer: The city clerk's office has the official version of the Bethel Municipal Code. Users should contact the city clerk's office for ordinances passed subsequent to the ordinance cited above.

[City Website: www.cityofbethel.org](http://www.cityofbethel.org)

[Hosted by General Code.](#)

Introduced by:
Introduction Date:
Public Hearing Date:
Action:

CITY OF BETHEL, ALASKA

ORDINANCE #25-XX

AN ORDINANCE BY THE BETHEL CITY COUNCIL AMENDING BETHEL MUNICIPAL CODE 13.08, SEWER SERVICE, DELINQUENT ACCOUNTS

WHEREAS, Bethel Municipal Code 13.04.270 contains a process for managing delinquent accounts for water service that allows the city to turn off water service when an account becomes delinquent;

WHEREAS, currently, Bethel Municipal Code 13.08.220 contains a similar provision for addressing delinquency in sewer service, but rather than allowing the city to discontinue sewer service, this provision requires the city to maintain those accounts, treat them as public nuisances, and abate them accordingly;

WHEREAS, it is in the financial interest of the City's taxpayers for the City to be able to discontinue sewer service in the same manner as it does water service;

WHEREAS, this change will not have an adverse impact on public health because BMC 13.08.240-41 also provides a process for declaring and abating sanitary nuisances.

NOW THEREFORE BE IT ENACTED BY THE CITY COUNCIL OF THE CITY OF BETHEL, ALASKA;

Section 1. Classification. This ordinance is permanent in nature and shall be placed in the Bethel Municipal Code.

Section 2. Amendment. Bethel Municipal Code 13.08 is amended; old language is stricken, and new language is underlined.

13.08.220. Delinquency

~~A. The city shall send a notice of account delinquency to each customer on or after ten (10) days after the account becomes delinquent.~~

Introduced by:
Introduction Date:
Public Hearing Date:
Action:

~~B. On or before fifteen (15) days after an account becomes delinquent, a notice of delinquency and public nuisance shall be sent to the customer and to the owner of the premises. The notice shall state a date on or after which the premises will be declared a public nuisance if the delinquent account is not paid in full prior thereto. Such date shall not be less than five (5) nor more than fifteen (15) days from the date of the notice. The delivery to the premises served or mailing to the address on record of the customer and of the owner shall be considered a delivery to the customer and to the owner.~~

~~C. If the delinquency has not been cured by the date stated in the notice, the city may declare the premises a public nuisance and proceed to abate said nuisance in accordance with BMC 13.08.241.~~

~~D. Interest on delinquent accounts shall be paid at the rate of fifteen (15) percent per annum. Delinquent payments, with interest, shall constitute a lien on real and personal property of the person or entity whose account is delinquent.~~

13.08.220. Delinquent accounts.

A. The finance department shall send a notice of account delinquency to each customer when the account becomes delinquent.

B. Within fifteen (15) days after an account becomes delinquent, sewer service may be discontinued if the delinquent account is not paid in full prior thereto.

C. Prior to discontinuance of delinquent accounts, the finance department will send a notice of discontinued service giving a final date due for payment. If the customer is not the property owner, a copy of the discontinued service notice will be sent to the property owner as well.

D. A nonsufficient funds (NSF) check is not payment on your account. Should the city receive a NSF check for payment of an account on the discontinuance list, sewer service will be terminated with no further notice from the city. In addition to the initiation and discontinuance fees, and all past due amounts, a thirty dollar (\$30.00) NSF fee will be required to be paid in certified funds or cash before sewer service will be restored.

E. On the discontinuance date, any agent of the department or city may discontinue the sewer service.

F. Interest on delinquent accounts shall be paid at the rate of fifteen (15) percent per annum. Delinquent payments, with interest, shall constitute a lien on the real property where the account is delinquent.

Introduced by:
Introduction Date:
Public Hearing Date:
Action:

G. The city has the authority to collect from the delinquent customer all expenses that relate to the collection effort including: (1) cost of collection; (2) attorney's fees; (3) recorder's fees; (4) court costs.

SECTION 3. Effective Date. This ordinance shall become effective upon passage by the Bethel City Council.

ENACTED THIS _____ DAY OF _____ 2025, BY A VOTE OF _____ IN FAVOR AND _____ OPPOSED.

ATTEST:

Rose Henderson, Mayor

Lori Strickler, City Clerk

City of Bethel, Alaska

City Manager's Office September 24, 2025 – October 6, 2025

Partnerships

Independent Power Producer (IPP):

As a follow-up to the meeting noted in the previous report, on October 2, Grant Manager John Sargent and Finance Director Jim Chevigny met with Walter Jim from ONC, and James Jensen and Ian Tilford from the Office of Indian Energy. The group discussed the community's goal of establishing an Independent Power Producer (IPP) in Bethel. A follow-up meeting is scheduled for October 7, which will also include representatives from the Alaska Native Tribal Health Consortium (ANTHC).

Lighting Improvements:

The City is collaborating with ONC to identify roadway lighting improvement opportunities. ONC plans to apply for a grant in January, and has requested that the City identify priority locations for lighting enhancements. The City will prioritize high-traffic vehicle and pedestrian areas with low visibility that fall within ONC's road inventory. Staff will begin developing a plan within the next few weeks.

Regional Resource Coordination Committee (RRCC)

On October 3, Planning Director Lee Foley provided the RRCC with an overview and update of the City's Hazard Mitigation Plan. The RRCC includes representatives from several organizations, including AVCP divisions, the Lower Kuskokwim School District (LKSD), and the Yukon-Kuskokwim Health Corporation (YKHC).

Yukon-Kuskokwim Delta Regional Multidisciplinary Team

Administration attended the Regional Multidisciplinary Team Meeting on September 26. The team includes representatives from:

- Alaska State Troopers
- Bethel Family Clinic
- Bethel Police Department
- Irniamta Ikayurviat
- Yukon-Kuskokwim Children's Advocacy Center
- State of Alaska, Division of Juvenile Justice
- State of Alaska, 4th Judicial District (Bethel District Attorney's Office)
- State of Alaska, Office of Children's Services – Western Regional Office
- Tundra Women's Coalition
- Yukon-Kuskokwim Health Corporation (Medical and Behavioral Health-Outpatient Divisions)

The group is currently working on updates to the Agency Memorandum of Understanding (MOU).

Projects

Tundra Ridge Road Improvements

During the week of September 29, Tundra Ridge Road received a much-needed facelift. Last year, the State completed a rehabilitation project on this roadway as part of the Statewide Transportation Improvement Plan (STIP). However, the rock material specified for that project did not produce sufficient “fines,” resulting in a surface that lacked the necessary compaction and strength. This led to issues such as rutting and potholes.

To address these problems, the City made a significant investment by applying new gravel to the road surface to improve its durability and long-term stability. The City has communicated these concerns to the State to help ensure that similar materials are not used in future projects.

H Marker Road Rehabilitation

Rehabilitation work also took place on H Marker Road during the week of September 29. This roadway has frequently been affected by high water levels, which at times rendered it impassable. The Streets and Roads Division raised the road grade and enhanced drainage to support improved stability and year-round accessibility.

City Subdivision Water System Repairs

That same week, crews responded to a glycol leak in the City Subdivision water system. The project required close coordination among the Piped Utility, Facility Maintenance, and City Subdivision Water Treatment Plant teams. To access the affected lines, staff temporarily disconnected two boilers located in the Teen Center. Once the repairs were completed, the Facility Maintenance team reinstalled the boilers and restored the system to full operation. This was a complex project that required significant collaboration and effort.

Facility Maintenance – Heat Exchanger Repair

In addition, the Facility Maintenance Division repaired a heat exchanger at the City Subdivision Water Treatment Plant, helping ensure reliable heating and system performance as colder weather approaches.

Piped Utilities

The Piped Utilities team continues efforts to improve and restore facilities that have experienced years of deferred maintenance. Recently, the team rebuilt the deck at the “old shop” and is actively organizing and inventorying tools and equipment to improve efficiency and workspace safety.



YK Fitness Center

The replacement pump for the YK Fitness Center hot tub has arrived. While the Facility Maintenance team does not currently have the capacity to install it this week, installation is planned within the next few weeks as resources allow.

Miscellaneous

Coffee with KYUK: The City Manager participated in *Coffee with KYUK* on September 29th to discuss the City's new utility guides.

City of Bethel FY24 Audit: The Finance Department is making significant progress on outstanding audits. Over the past month, staff have been responding to test work requested by Altman Rogers & Co. The auditors are scheduled to perform the FY24 audit the week of November 3rd.

US Department of Energy Visit: Dr. Huberto E. Garcia, Ph.D., Directorate Fellow at Idaho National Laboratory, was scheduled to visit Bethel this month to meet with AVEC and LKSD students and discuss emerging technologies that integrate AI with energy sources. The visit was canceled due to funding limitations, but we hope to reschedule in the future.

Director of Public Safety Recruitment: The application period for the Director of Public Safety position closes on October 28th. Administration will form a hiring committee to review and evaluate qualified candidates.

Electrical Work: The City's electrician contractor will be in Bethel the week of October 13th to:

- Disconnect the electrical connection from the Bethel Heights Water Treatment Plant backwash tank,
- Address lighting issues at the YK Fitness Center parking lot, and
- Install a new outlet at the Port to place the City's leased building on its own meter.

Community Events: The annual Scarecrow Hunt and the Cleanup Freeze-Up events have been initiated.

Plastic-Free Campaign Donation: Following coordination with Beverly Hoffman, Alaska Community Action on Toxics has generously donated 215 canvas tote bags to support the City's plastic-free campaign.

Ordinance 25-13 Notices: The City has provided notice of Ordinance 25-13 to local businesses. Public notifications will follow in the coming weeks.

Community Parks & Recreation Report – September 2025

By: Dept. Director, Shane Iverson

YKFC Transition

- Two new Certified Lifeguards: we added 2 new certifications to our staff. Both adults, one Jesuit Volunteer.
- Two new Certified Lifeguard **Instructors** (pending.completion.of.training.at.time.of.writing);
- Continue to blend positions to maximize staff quality and reduce overall staff hours.

Programming

- Regular Swim & Fitness Lessons continue for Bethel Youth Facility, Kuskokwim Learning Academy McCann Center.
- Adapting policy to allow waivers for 14-15 y.o. to participate in sanctioned school based, strength training programs, in the weight room.
- Video demos of all weight room equipment are now available through attached QR codes.
- Memorial Tree Planting 20 White Spruce planted around Pinky's Park by community members
- Fitness Bingo Challenge
- Clean up Freeze Up

Dog Park

- City Administration reviewing Riverside Park designations and preparing Conditional Use Permit.

Facilities

- Auto- chlorinator: fixed
- Spa Pump has been shipped. Installation to follow.
- Lifeguard shortage has improved, on average. We've held rec-swim 5 of 6 days per week the last 2 weeks. New HS sports schedule will create new challenges/opportunities for staffing.

Upcoming

- Certify 3 staff members in Water Safety Instruction (future swim lesson instructors)
- Membership card experiment to look for ways to further increase efficiency
- Begin recreational programming for youth two days per week (Saturday and Tuesday likely)
- BLS, Basic Life Support, (CPR, AED, Airway) training for non-lifeguard staff.
- PFD Annual Membership Sale
- Squatober Fitness Challenge

- END REPORT-



City of Bethel
Finance Director
PO Box 1388
Bethel AK 99559
(907) 543-1376 / (907) 543-3817 (fax)
www.cityofbethel.org
jchevigny@cityofbethel.net

Monthly Report to City Manager - September

TO: Lori Strickler
FROM: Jim Chevigny

- Providing detailed support to the city attorney for collecting past due sales taxes.
- Discovered and am following up on Medicaid billings for ambulance call-outs that have not been managed and collected since March, 2024, totaling more than \$225,000.
- Reviewing detailed line item sales tax monthly reports in order to verify whether remote sellers are correctly reporting their sales into Bethel. It appears some may not be reporting correctly and I have started the process of communicating with those companies.
- Working with the sales tax accountant to better manage that area of revenue for the city. This includes developing a reliable system of communicating with businesses to bring them into compliance.
- Together with V&E, have developed a reliable system to auction equipment the city no longer needs. The first nation-wide auction takes place October 16th and we have negotiated a contract that appears to be favorable to the city, decreasing their standard commission by one-third.
- Determined which investment and bank accounts are earning interest and how best to manage these accounts going forward.
- The City has several sales tax forms and a sales tax code that are somewhat complicated for a business owner to use and understand. I am developing several ideas that should make the penalties and interest sections more clear and user friendly, eliminating confusion. These will be submitted to the city manager to consider for council approval.
- Several contracts were reviewed and comments submitted.
- The RFP for leveling the Courthouse and City Hall was awarded and I have been in contact with the contractor, Northern Contractors, to answer questions and provide support as needed. Their initial payment for mobilization has been paid and their schedule calls for their entire crew to begin work October 14th.
- A decision to sell the vehicle stored at the Anchorage airport was made and it has been moved from that facility. Insurance has been verified, the title located and it should be ready for sale shortly. I am coordinating this process with the police chief.
- I analyzed the GCI monthly service billing and found equipment no longer needed, services that were incorrectly priced and email accounts that have not been used in many years. The October statement will be much easier to read and costs have been saved.

- I am analyzing what amounts are to be set aside for specific purposes and whether they have been properly funded and accounted for. This requires determining what set asides are required, in what amount and the history of each. An example is the Seawall Maintenance account that will be updated in October.
- Together with the City Manager, have begun initial research on the feasibility of a solar panel installation of a material size in order to lower the City's electric billing. We have a \$70,000 grant in place for solar panels on the new gym, yet this research is to determine whether a solar field is feasible and whether the City can secure funding to develop it. I have spoken with a person on the Finance Committee who is familiar with an installation in the Kuskokwim area that has saved the owner more than 60% in electric costs the first year.
- Requested and received bids on equipment barged to the City that saved money.
- Initiated a project to identify every piece of Mobile Equipment and every Vehicle the City owns, verifying each is insured and at its' proper estimated value, is listed in the correct department and we have its title on file.
Once this is completed, we will determine what pieces, if any, should be sold and then will establish a five-year Mobile Equipment and Vehicle capital budget plan in a manner that will be included in the annual city budget and updated each year. This will include what pieces should be considered for retirement and what additions should be budgeted for.
- The police department has been paying almost \$600 a month for potable water, due to their wells' filtration system being inoperable and badly in need of repair. I am familiar with these systems and have negotiated for a reputable supplier to travel to Bethel to assess the existing system and provide a detailed recommendation to fix it.



City of Bethel

Finance Department

Manager's Report for September 2025

Date: October 7, 2025

To: Lori Strickler, City Manager

From: Cynthia Sharp, Deputy Finance Director

Subject: Management Report

Current Events within the Finance Department

September has been a very productive month for the Finance Department. With the addition of a couple of new team members we are now almost fully staffed. Our office hours have changed to Mon-Friday 8:30-4:30pm.

We have a new front desk person-Kayla Hendrickson

We have a new Accounts Payable person-Jocelyn Mockta

We have a new accountant-Roni Kimbrel

Welcome to the team ladies

Accounts payable/Payroll are working as a team to train Jocelyn in how we do accounts payable and as a backup for payroll.

The Auditors will be conducting a remote FY24 Audit the week of Oct 20th.

General Ledger position has been replaced by the accountant position.

Finance Committee

The Finance Committee had a quorum. Discussed the managers report and future projects.

MEMORANDUM



DATE: October 7, 2025

TO: Lori Strickler, Acting City Manager

FROM: John Sargent, Grant Manager

SUBJECT: Grant Manager’s Report for October 14, 2025 Bethel City Council Meeting

Grant Applications in Preparation

EPA Grant for Removal of Derelict Vessels

The City is working on a Memorandum of Understanding with Joe Dale for the use of his property on the Kuskokwim River that would be conducive to cutting up one or more of the barges removed from Steamboat Slough and shipping the pieces downriver by barge. The City is close to being approved by EPA to start spending some of the funding prior to full approval once EPA reviews and approves the City’s environmental review form response.

State Revolving Fund Loan Applications

I am working on three SRF Questionnaires for water and sewer projects with the goal of securing a forgiveness amount for each:

- 1. Structural survey of Bethel Heights Water Treatment Plant
- 2. Backwash tank replacement at Bethel Heights Water Treatment Plant (revision)
- 3. Water and Sewer truck operations center (storage facility)

Alaska Community Transit Operations Grant FY 2027

The Alaska Community Transit Operations Grant for next year is due December 19, 2025. The City is planning to maintain its current operation schedule and personnel.

Recreational Trails Grant

The City is pursuing funding for the YKHC-City Subdivision Trail that will go from the YKHC campus to the City Subdivision and avoid the highway. This will be a gravel trail with some culverts in place to facilitate water movement.

Grant Applications Submitted

Rural and Tribal Trails Grant

I prepared and submitted one grant application to the Rural and Tribal Trails Grant Program to seek \$250,000 in funding to hire a consultant to create a detailed School Access Plan that includes design and easements for trails and pathways to and around the five school buildings and LKSD administrative building. The Plan will also include road improvements, like lighting, guardrails, and widening. This unique grant is first-come, first served for applications submitted.

Grant Administration

State Revolving Fund Loan Applications

All four State Revolving Fund Loan applications have been submitted. I submitted environmental review forms for three of the projects. The Environmental Reviewer for the SRF Program had the City send a request to the State Historic Preservation Office to request a clearance letter for the QFC#2 Lift Station project and the two water plant automation projects.

Current Grants

See list on following pages.

City of Bethel Current Grants - October 2025

#	Grant	Amount	Expiration
1	Coronavirus Capital Project (CCP) Fund	\$ 9,000,000	12/31/26
	City of Bethel spent \$3,215,040 of the grant funds thus far and has a balance of \$5,784,960 left to spend. The grantor is using the new DCRA Grant Portal website to manage this grant.		
2	Denali Commission Grant	\$ 500,000	9/30/26
	Design and construction of Bethel Multiuse Community Center (gym, computer facilities). Grant is active. Project funds are being charged to the grant to show federal authorities that grant funds are in play.		
3	CSP - DHSS FY 2025	\$ 242,311	6/30/26
	City submitted a new grant budget to accommodate for the State's one-time grant reduction from \$323,081 to \$242,311 for FY 2026. The State also increased the City's match requirement, but the in-kind expenditures made to operate the Dispatch Center are more than enough to cover the match.		
4	23SHSP-GY23 – Virtual Simulator & Fencing	\$ 268,000	9/30/25
	I expect to close this grant in October 2025. The City was able to purchase and install security fencing around the City Subdivision Water Treatment Plant and purchase one VR shooting simulator		
5	Designated Legislative Grant > Dust Control	\$ 1,200,000	6/30/29
	City of Bethel purchased one hydroseeder and hydroseed supplies. They were delivered.		
6	State and Local Cybersecurity Grant Program (SLCGP)	\$ 75,000	12/31/25
	The City of Bethel plans to hire a consultant to conduct a cybersecurity review of the City's IT network, equipment, software, and physical layout. The City plans to use recommendations in the plan as grant requests in a succeeding year.		
7	VSW Capital Improvement Project Grant	\$ 13,860,000	
	DOWL completed the Design Analysis Report, the document done prior to the 35% design. In October, the City will find out if it will be awarded \$4,060,392 in additional funds to cover upcoming year expenses.		
8	Last Frontier Housing Initiative	\$ 5,000,000	12/31/26
	The low-income housing project and City professional housing project are proceeding rapidly. Ted Stinson with UrbanKNKT, LLC is substantially done with his project. Kuqo Construction is finishing up the professional housing units they are constructing in City Center.		
9	State Homeland Security Program Grant - SFY 25	\$ 9,000	9/30/26
	This grant will cover the cost of paying a trainer to come to Bethel to teach ICS-300, an Incident Command System course for first responders and municipal administrators who may play a role in a major emergency situation.		

10	Safe Streets 4 All Grant	\$ 52,800	TBD
The City of Bethel signed the grant agreement. City waiting for dually signed agreement before beginning grant work.			
11	Justice Assistance Grant (JAG)	\$ 11,116	9/30/25
The City asked for an extension on this grant in order to complete the project with funds from a federal earmark for the same purpose. Senator Murkowski's office announced that the City's request for \$70,000 was approved for this camera/card reader purchase. No JAG funds have been spent to date.			
12	Energy Efficiency and Conservation Block Grant (EEBG)	\$ 75,220	9/30/26
Solar panel installation on YK Fitness Center. Project likely to begin once UIC begins construction of Bethel Community Center (gymnasium). Parks and Rec. Director assumed role of Project Manager for this grant.			
13	Rasmuson Foundation Grant	\$ 250,000	1/31/26
This grant will cover part of the cost of constructing a new animal shelter in Bethel, once construction initiated.			
14	Community Transit Operating Grant	\$ 184,131	6/30/25
Transit Manager Evon Fox manages the daily operation of the transit system, handles all purchases, and completes monthly billing summaries and quarterly reports. FY 26 grant began July 1, 2025 and will run until June 30, 2026.			
15	Community Transit Capital Grant	\$ 853,563	6/30/26
This grant covers the capital cost of a new boiler in the transit center and the purchase of two new buses. Two buses purchased and in use. This grant project was completed.			
16	QFC#2 Lift Station Improvements - SRF Loan /100% forgiven	\$ 975,000	TBD
Required environmental review form and SHPO letter.			
17	Bethel Heights Water Treatment Plant Automation - SRF Loan	\$ 1,418,000	TBD
100% forgiven. Required environmental review form and SHPO letter.			
18	City Subdivision Water Treatment Plant Automation - SRF Loan	\$ 1,369,000	TBD
100% forgiven. Required environmental review form and SHPO letter.			
19	Purchase of One Sewer Haul Truck - SRF loan /100% forgiven	\$ 315,009	TBD
Loan agreement coming soon.			

Total \$ 35,658,150



CITY OF BETHEL

Post Office Box 1388

Bethel, Alaska 99559

Phone: 907-543-2047

TO: City Manager
FROM: Human Resources
SUBJECT: Monthly Manager Report

DATE: September 30, 2025

The following addresses significant projects that were in addition to general personnel action-based activities during the week (hiring, terminations, benefits review, employee support, etc):

Recruitment and Hiring

The City received 41 applications this month and has filled some departments. The Finance Department is fully staffed, as is the Fire Department. Vehicle Maintenance and CDL Drivers continue to be the most critical vacancies, mostly challenged by the shortage of CDL-licensed individuals statewide and an inability of many applicants to meet the federal substance-use prohibitions.

Hauled Services Vacancies – Financial Impact

Hauled Services has 17 permanent driver positions budgeted. This is in addition to the Foreman position, also a driver, and a “rotating” driver that is shared across various divisions in Public Works. Of the 17 regular positions, only four (4) are filled with permanent, full-time employees. The City currently has 9 temporary drivers supplementing the staff requirements and one additional on-call driver.

The shortfall in permanent hires is causing a significant amount of overtime and increasing the City’s cost for providing hauled services. As budgeted, drivers, if limited to 40-hour work weeks (base pay rate, with no overtime or call-outs), would provide 680 hours of service to our residents each week. As filled, the City’s permanent drivers perform 160 hours of service at the base pay rate. The 9 temporary drivers add another 360 hours of service at the base pay rate.

As currently staffed, hauled services performs 520 service hours at the base pay rate – when 680 are required to complete the division’s weekly workload. The remaining 160 hours every week are therefore paid at overtime rates. If divided equally, it requires each driver to work 12 hours of overtime every week just for the City to meet its regularly scheduled service requirements. This is a significant HR concern from an employee wellness perspective. Excessive hours beyond 40 per week can become a safety concern and the ongoing pattern places more burden on the drivers. The demands are further increased if any driver is on leave, or if there are numerous calls for additional service.

Permanent employees have schedule protections and paid time off that temporary staff do not. Temporary drivers may therefore be satisfying more of the overtime requirements than permanent staff. At increased hourly wages, this further increases the cost of providing hauled services to the

community, but also makes the temporary positions more appealing than permanent for those individuals seeking a higher pay with no benefits.

HR is working with other communities to brainstorm options for attracting and retaining permanent drivers or additional temporary drivers. Ultimately, the goal is to employ sufficient individuals that the overtime requirements are minimized, providing for better working conditions for employees and reducing unanticipated costs for the City.

Employee Training

HR participated in the Target Solutions training webinar and will be launching City-wide training. Supervisors will have the option to view the training as a group, rather than individual assignments, and the City will record participation for the individuals. Mandatory training will allow the City to apply for premium credits with Alaska Public Risk Alliance (APRA), reducing our overall liability insurance cost. Supervisors can also request that specific additional topics be assigned to their employees.

Workplace Safety, Injuries and OSHA Notifications

One injury was reported during the month of September and did not require OSHA reporting. The injury is also being reviewed under Family Medical Leave and ADA requirements.

Ongoing and Future Projects

- Updating classification and compensation data.
- Job Description review and updates.
- Updating the Employee Handbook, last adopted by City Council in 2015.



City of Bethel

October 1, 2025

FROM: Planning Director
TO: Lori Strickler, City Manager
SUBJ: Planning Director's September 2025 Report

September 2025 Events

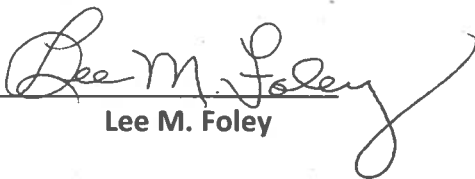
- **Planning Commission:** The Commissioners discussed the updates on nuisance properties. The Landfill Manager gave a brief presentation of the requirements for demolition waste being accepted by the landfill and followed up with a Q&A session.
- **YK Fitness Center Gym Expansion:** The current schedule for the AML barge has it arriving on or about October 2, 2025, give or take a day or two depending on weather. The steel package consisting of structural items, panels, and fabricated piles should be on this barge. Civil work is still in progress. Most of the base for the building pad is down and work is ongoing on capping and finalizing the finish grade of that area.
- **Database Tracking Table:**

Residential Site Plan Permits	Received this Month	Total Received for Year	Total Approved for Year
	6	39	39
Commercial Site Plan Permits	0	11	11
Conditional Use Permits	0	2	1
Variances	0	0	0
Zoning Amendments	0	1	1
Plats	0	3	3

Summary Statement: Through community involvement and tours of the City by Planning Department personnel, the spreadsheet and notices are updated and sent respectively.

- **Abandoned and/or Junk Vehicles:** Tagging vehicles for towing by the Planning Department is temporarily in abeyance while a new system for processing is determined by the Acting Public Safety Director.
- **Vacancies:** Fully staffed.

- **Other Events:** A Public Hearing on the Kuqo Construction CUP application will be held by the Planning Commission on October 9, 2025.
- **Large Projects:**
 - 1. Ptarmigan Street Encroachments:** A Public Property Encroachment Ordinance has been prepared by the City Manager and City Attorney for City Council Consideration.
 - 2. Ptarmigan Street Culvert Replacement:** One half of the project has been completed. Due to various factors, the final half of the project will be completed in the Spring of 2026.
 - 3. City of Bethel Professional Housing Project:** No new photos this month.
 - 4. Hazard Mitigation Plan:** I will present a brief overview of the plan and the update process to the Regional Resource Coordination Committee on October 3, 2025.
 - 5. Map Highlighting All City-Owned Properties:** Collection of data pertinent to this project is ongoing.
 - 5. Nuisance Abatement:** Properties at 1119 Naun Raq and 455 Ridgecrest Drive have been identified for City Council consideration at a future Abatement Hearing.


Lee M. Foley

PORT OF BETHEL

Post Office Box 1388
Bethel, Alaska 99559
Voice: 907-543-2310
Fax: 907-543-2311



To: Lori Strickler, City Manager
From: Edward Flores, Port Director
Subject: September 2025 Managers Report

- **Small Boat Harbor**
With moose hunting season this last month, we did experience an increase in activity. Although I believe we have reached our total for boat permits this season. we will start pushing for long term parking permits. The start of the winter season will be on the first of November. We are planning on taking the floats out of the harbor starting mid October. We will have messages to the public and posts on Facebook to let the community know. We do have all the new floats in Bethel, and will be ready for a spring 2026 full deployment.
- **City Dock/Beach 1/Petro Port**
The City Dock and Beach 1 were for the most part calm during the month of September. we have done some planning for the upcoming winter season, in an attempt not to overcrowd the City Dock for the last barges of 2025 and the first for 2026. we will have a couple of companies that will be storing freight on the dock for projects slated for summer 2026. As well as spots for the river boats and barges on Beach 1. Late in the month we had a couple of vessels come to Bethel or extended their stay in Bethel due to weather. We are expecting maybe 4 more barges of petroleum for the season.
- **Port Office**
The port office is running well. We have no issues with heat. Although we have had a bit of a problem with connectivity at the end of the month here at the Port office. I am told that we are not the only ones with the problem, and they are aware of the problem. Building Maintenance continues to do their morning checks on the building, with no problems.
- **Admin / misc.**
All boat movements will be calculated and billed out this first week of October. The Port Commission did not meet in September. Our next scheduled meeting will be at 7 p.m. on October 20, 2025. At City Council Chambers. We are revamping our Facebook page to be more able to disseminate information to the public. We are working with the City Clerk and KYUK to produce a commercial that speaks to our different types of permits that are offered here at the Port. We currently have three different types of permits for your boat and one permit for vehicle parking. In early September, representatives from Drennon Construction and the supplier of the floats were here on the ground to educate and demonstrate to our crews how the new floats go together and how they attach to the steel float. As well as fabricate up the connections for the first float. We feel confident in our ability to set out the new floats come spring time.

Description	Issued Prior Month	Total this Calendar Year
Number of Small Boat Harbor Permits Issued	1	340
Number of vehicle long-term parking permits issued.	0	8
Number of mainline vessels arriving/departing	3	41
Number of river vessels arriving/departing	31	96
Total cargo tonnage received	1,618.9355 T	9.585.97 T

CITY OF BETHEL POLICE DEPARTMENT



MONTHLY REPORT September 2025

Personnel:

Current Staffing			
Position	Allocated	Staffed	Vacant
Community Safety Patrol (Grant Budget Reduction)	3/2	2	1
Community Service Officer	2	1	1
Evidence and Record Custodian	1	1	
Administrative Assistant/Taxi Inspector	1	1	
Dispatcher	5	4	1
Dispatch Supervisor	1	1	
Command Personnel	2	1	1
School Resource Officer	1	0	1
Peace Officers	16	15	1

Peace officer vacant positions are the school resource officer, and an officer for patrol. We are testing for 3 Sergeants' positions in October. We currently are pending vacancies for a Dispatcher and CSO. Two personnel are attending the Police Academy in Fairbanks beginning in October. Three personnel will be scheduled for the reciprocal academy in Sitka in November for 2 weeks.

Operations:

Operations				
	August 2025	September 2025	Difference	Year to Date
Calls	1058	913	-145	9171
Assault	39	34	-5	462
Intoxicated Pedestrian Calls	172	158	-14	1724
Driving Under Influence Calls	17	9	-8	127
Domestic Violence Calls	10	10	0	129
Animal Calls	23	15	-8	233
Animal Bite Reports	0	1	+1	9
Sexual Crime Reports	4	7	+3	60
Death Investigation Reports	2	1	-1	6

Traffic Accidents	11	8	-3	89
-------------------	----	---	----	----

Community Outreach:

On-going meetings with ONC concerning forming a coalition of resource organizations to work towards campaigns dealing with:

1. Suicide prevention
2. Sexual Assault
3. Domestic Violence
4. Alcohol/Drug Use

Obtained assistance with Christmas toy drives and Shop with a Cop through ONC, AC Market, VFW etc., to be able to provide a new toy to as many children in the community as possible.

Working with AST and YKHC to host “Coffee with a COP” mid-November.

Officers met with staff at Ayaprun Elitnaurvik and assisted them with their upcoming Public Safety month. The Bethel Police Department and Fire Department met with each class, answered questions and provided information about 911. The Police mascot was at the school and took pictures with the students. Chief Kirkham presented the school with a certificate of appreciation for bringing together Public Safety and Schools. The kindergarten class received coloring books and crayons.



Bethel Fire Department September Report

Total calls 135

Fire Calls: 11

EMS Calls: 124

Most fire calls were lockouts both car and house and false alarms made up most fire calls.

One Notable Fire Call

On 09-08-2025 at 02:57 PM, firefighters responded to the report of a structural fire. Firefighters observed heavy flames and smoke coming from the structure and fire suppression efforts were initiated. The structure was extinguished with no injuries reported. The cause of the fire is undetermined at this time.

Notable EMS Calls

On 09-01-2025 at 10:16 AM, Medics responded to the report of a motor vehicle accident. The patient was assessed and transported to the hospital

On 09-08-2025 at 05:19 PM, Medics responded to the report of CPR in progress. The patient was assessed and transported to the hospital.

Staffing

Career Staffing. 10 out of 10 positions added one firefighter position filled.

Volunteering staffing. 35 volunteers

Training: Three members of the department went down to Sitka for the Alaska State Fire conference and completed a multitude of training courses ranging from leadership classes to airport firefighting. These members will be passing on knowledge to the other membership.

Fire Prevention: Through out the month kids from Pre-K through 4th grade will be coming to the station for fire prevention month.

Breast Cancer Awareness: Fire Department members will be wearing pink fire shirts throughout the month in support of Breast Cancer Awareness.



William Arnold, Public Works Director
 1155 Ridgecrest Drive
 PO Box 649 Bethel, AK 99559
 P: (907) 543-3110
 F: (907) 543-2046
 warnold@cityofbethel.net

MEMORANDUM

DATE: 09.29.2025
TO: City Manager
FROM: Bill Arnold, Public Works Director
SUBJECT: Manager’s Report – Public Works Department

Programs/Divisions

Hauled Utilities: Hauled Utilities to date is running on schedule with our monthly water delivery schedules. We will be changing out our summer tires for the winter tire we do have on hand.

Utilities Maintenance: The old shop at the Landfill has been renovated. The old loading dock was torn out and a new loading dock was built. The inside of the old shop was cleaned up to prepare for drying hoses this winter. We have completed the painting, insulation and repair of fire hydrant boxes. We continue to support and operate the Lagoon draw down and operations of the pump there.

- 2 Sewer lines flushed
- 16 Red lights investigated
- 13 callouts for various complaints and requested services
- 2 water cut-offs
- 1 water turn on

Property Maintenance:

Police Department	
9-Sep	Reset shop boiler
10-Sep	Adjust door at PD
10-Sep	Work on toilet flapper

12-Sep	Tear out carpet on stairs
Utilities Maintenance	
9-Sep	Replace bulbs Killbuck lift station
Bethel Heights Water Plant	
15-Sep	Look at demo plan with Bill and Gary
18-Sep	Work on circulation pumps
18-Sep	Add glycol
18-Sep	Tighten gate valves
18-Sep	Reset timeclock
19-Sep	Checked pumps to ensure voltage was correct
25-Sep	Add glycol
25-Sep	Take glycol to plant
City Sub Water Treatment Plant	
8-Sep	Repair door city sub
Courthouse Building	
1-Sep	Turn off lights
3-Sep	Replace filters AHU 3 and 4
3-Sep	Check broken window DA's office
8-Sep	Work on indoor and out door lights
10-Sep	Replace air filters
15-Sep	Replace to ballast in light fixtures
16-Sep	Move pump to remove water under building
16-Sep	Check toilet in 128A
16-Sep	Contact Midnight Sun about paper towels and hand cleaner
17-Sep	Repair toilet Rm 138
17-Sep	Repair toilet Rn 128A
17-Sep	Relocate water pump under building
17-Sep	Work on removal of glycol Pump 4
18-Sep	Add pressure to heating system
18-Sep	Relocate water pump under building

22-Sep	Turn on heat trace for water lines
22-Sep	Check belts on AHU-7
24-Sep	Move water pump and hose x3
24-Sep	Remove unserviceable circulation pump
29-Sep	Tighten belts ahu4
Pool Building	
4-Sep	work on scissor lift
4-Sep	Move Scissor lift to lobby
17-Sep	Reset boiler #2 and turn on return fan upstairs
19-Sep	Provide keys to storage builing at Pinkys Park to Shane
22-Sep	Check to verify fan motor 1C is operating Trouble shoot VFD
25-Sep	Add glycol
25-Sep	Turn up boilers
25-Sep	Take glycol to fitness center
Public Works Building	
1-Sep	Raise Flags
4-Sep	Repair southside toilet
9-Sep	Replace diaphragm southside toilet
10-Sep	Lowered flags
11-Sep	Rebuild valves and plumbing for pressure washer
15-Sep	Raise Flags
18-Sep	Lower Flags Halfmast
19-Sep	Raise Flags
22-Sep	Clean exterior controls of all dust and debris on boilers
Fire Department	
4-Sep	Replace oberdorfer pump
4-Sep	Replace aquastat on waterheater
15-Sep	Replace cord cap on power drop
22-Sep	Turn on water circulation pump for winter
Highway Lift Station	
1-Sep	Add glycol pressure
18-Sep	Add glycol pressure
24-Sep	Add glycol pressure
Teen Center	
26-Sep	Work on A,B,and C loop lines. Thermo couple and reinstall unions.

29-Sep	Work on reinstalling Boiler A
30-Sep	Work on B loop and work on reinstalling boiler B
Boardwalk	
17-Sep	Replace boards on vandalized section of boardwalk
Dog Pound	
2-Sep	Repair water hose leak
15-Sep	Reset boiler
16-Sep	Replace control module on boiler
17-Sep	Work on boiler Boiler eye loose
LandFill	
2-Sep	Work on checkvalve
Play Parks in General	
x10 Parks	
12-Sep	Pickup trash all parks
19-Sep	Drain water holding tanks

Road Maintenance:

Vehicles and Equipment: As usual servicing and fixing city vehicles and equipment as needed.

Transit System:

Busy month again with ridership as usual. It was a bit bothersome for the riders though when the construction made Transit bus go around the other direction but the riders did enjoy the different scene for a change. Ridership did drop a bit though. They are as follows: 866 Elders, 12 Youth, 74 Adults, 130 Disabled, and 1,121 Pass riders. 15 Month and 62 Day passes were purchased for the month. ONC purchased for their clients 11 bus passes X 3 months. Total fares came to \$2,896.00. For most of the month TS 2 was on the road while TS 1 was down for maintenance. TS 2 logged 2,623 miles and used 146.489 gallons of fuel while TS 1 logged 91 miles and used 20.539 gallons of fuel.

Landfill & Hauled Refuse:

The landfill has had another busy month with the dumpster truck bringing 66 loads of trash to the landfill, 25 loads of trash from other city vehicles, private citizens brought 356 loads of trash to the landfill, and commercial customers brought 1823 cubic yards of trash to the landfill. There were 27 refrigerators brought to the landfill to be drained of freon. The landfill also received 13 vehicles to dispose of. There were 112 truck loads of cover material brought to the landfill in September. One of the temporary summer workers quit the first of the month. I am still looking for a person to fill the open position that requires a CDL.

Staffing Issues/Concerns/Training:

City of Bethel, Alaska

City Clerk's Office

Upcoming Meetings

- October 20, 2025 Special City Council Meeting 6:00 pm
- October 28, 2025 Regular City Council Meeting 6:30 pm
- November 12,(Wednesday) Regular City Council Meeting 6:30 pm

City Clerk's Office

- The City Council held a Nuisance Abatement Hearing on September 4, 2025 and declared the property at U.S. Survey 4117, Lot 37, Our Own Road, a Public Nuisance. The resolution which contains the findings and the orders of the City Council were sent to the Property Owner by certified mail and posted on the property. If the order is not followed, the City may take corrective action—the cost of which constitutes a lien on the property, chargeable to the proceeds of its sale. The abatement process is found in BMC 15.04.
- City Clerk will be on PTO from November 14-22, 2025.
- Trained the Public Safety and Transportation Ex-Offico on how to use the Agenda Management Software.
- Asked to participate on an Elections Panel for the Alaska Association of Municipal Clerks Conference.
- The City Clerk is also a member of the scholarship Committee for the Alaska Associations of Municipal Clerks.
- Took part in website training for the Municipal Website.

Election Tasks:

- The Write-in candidate filing period closed October 2, 2025 at 5pm. The Clerk's Office received one write-in candidate application and certified the candidate: Greg Schiedler
- KYUK hosted a Candidates forum on October 2nd at 6:30pm in Council Chambers. The Clerk's Office provided the space and technical support.
- The Clerk's Office served as the Early voting location for the Municipal Election at City Hall and the Absentee Voting Location for the REAA School Board Election.
- The City held the Regular Municipal Election on October 7, 2025. The Canvass Board will meet on Thursday October 9, 2025 to prepare a final certificate of the results of votes cast by absentee, questioned and challenged ballots and of votes cast by regular ballots, and the written report of the results will be in this agenda packet along with the Resolution to certify the results.

Task	Period Total	Year to Date Total
Passport Appointments	3	108
Burial Permits/Reservations	-	42
Notary Services	2	33
Meeting Minutes Drafted	1	24

Resolutions Drafted	1	8
Ordinances Drafted	-	3
AM/IM/Proclamation Drafted	1	20

Com

Committee/Commission Vacancies

Regular

Alternate

	Regular	Alternate	Com
Community Parks and Recreation Committee	full		2
Planning Commission	full		1
Port Commission	1		2
Public Safety and Transportation Commission	Full		2
Community Action Grant Technical Review Board	1		2
Public Works Committee	2		2
Finance Committee	1		2
Ethics Board	4		1

CITY OF BETHEL
REVENUES WITH COMPARISON TO BUDGET
FOR THE 2 MONTHS ENDING AUGUST 31, 2025

GENERAL FUND

	PERIOD ACTUAL	YTD ACTUAL	BUDGET	UNEARNED	PCNT
<u>TAXES</u>					
100-40-4300 TAX - SALES	569,580.70	1,395,620.11	8,400,000.00	7,004,379.89	16.6
100-40-4301 PENALTIES & INT - SALES TAX	3,417.51	2,477.05	58,204.00	55,726.95	4.3
100-40-4310 TAX - TRANSIENT LODGING	6,739.45	93,484.54	517,772.00	424,287.46	18.1
100-40-4320 CIGARETTE AND TOBACCO TAX	47,437.91	96,737.13	612,958.00	516,220.87	15.8
100-40-4322 MARIJUANA TAX	64,950.62	124,106.35	930,298.00	806,191.65	13.3
100-40-4330 TAX - ALCOHOL USE	28,842.86	58,307.09	394,766.00	336,458.91	14.8
100-40-4340 TAX - MOTOR VEH REGISTRATION	.00	.00	58,548.00	58,548.00	.0
100-40-4342 AK REMOTE SELLER SALES TAX	.00	.00	1,122,638.00	1,122,638.00	.0
TOTAL TAXES	720,969.05	1,770,732.27	12,095,184.00	10,324,451.73	14.6
<u>STATE & FEDERAL REVENUES</u>					
100-42-4102 PILT PROGRAM - STATE	.00	.00	1,106,744.00	1,106,744.00	.0
100-42-4203 COMMUNITY DIVIDEND	.00	.00	121,737.00	121,737.00	.0
100-42-4345 SOA ELECTRIC CO-OP TAX SHARE	.00	.00	21,697.00	21,697.00	.0
TOTAL STATE & FEDERAL REVENUES	.00	.00	1,250,178.00	1,250,178.00	.0
<u>CHARGES FOR SERVICES</u>					
100-43-4360 COMMUNITY PARKS & RECREATION	.00	.00	632,000.00	632,000.00	.0
100-43-4374 AMBULANCE REVENUE	.00	.00	160,000.00	160,000.00	.0
TOTAL CHARGES FOR SERVICES	.00	.00	792,000.00	792,000.00	.0
<u>LICENSES, PERMITS & FEES</u>					
100-45-4341 GAMING TAX	48,112.92	82,648.74	574,062.00	491,413.26	14.4
100-45-4377 PARKS & REC JULY 4TH FEES	.00	250.00	.00	(250.00)	.0
100-45-4500 TAXI PERMITS	10,050.00	16,150.00	137,810.00	121,660.00	11.7
100-45-4502 BUSINESS LICENSES	300.00	500.00	32,000.00	31,500.00	1.6
100-45-4504 ANIMAL CONTROL LICENSES	150.00	150.00	2,200.00	2,050.00	6.8
100-45-4510 PLANNING FEES	4,433.00	4,133.00	10,450.00	6,317.00	39.6
100-45-4511 PLAT/RECORDING FEES	.00	.00	2,920.00	2,920.00	.0
100-45-4512 SITE REVIEWS	1,600.00	3,750.00	1,440.00	(2,310.00)	260.4
100-45-4559 MISC PERMITS/LICENSES/FEE	950.00	959.00	6,642.00	5,683.00	14.4
TOTAL LICENSES, PERMITS & FEES	65,595.92	108,540.74	767,524.00	658,983.26	14.1

CITY OF BETHEL
 REVENUES WITH COMPARISON TO BUDGET
 FOR THE 2 MONTHS ENDING AUGUST 31, 2025

GENERAL FUND

	PERIOD ACTUAL	YTD ACTUAL	BUDGET	UNEARNED	PCNT
<u>MISCELLANEOUS</u>					
100-49-4202 SOA COURT FINES/FEES	90.00	890.00	13,236.00	12,346.00	6.7
100-49-4362 PC TICKETS	150.00	325.00	2,986.00	2,661.00	10.9
100-49-4379 POLICE DEPT MISC	45.00	440.00	6,820.00	6,380.00	6.5
100-49-4439 MISCELLANEOUS REVENUE	420.00	630.00	6,754.00	6,124.00	9.3
100-49-4590 INVESTMENT INCOME	.00	.00	1,075,220.00	1,075,220.00	.0
100-49-9482 SNOW REMOVAL	.00	.00	32,000.00	32,000.00	.0
TOTAL MISCELLANEOUS	705.00	2,285.00	1,137,016.00	1,134,731.00	.2
TOTAL FUND REVENUE	787,269.97	1,881,558.01	16,041,902.00	14,160,343.99	11.7

CITY OF BETHEL
EXPENDITURES WITH COMPARISON TO BUDGET
FOR THE 2 MONTHS ENDING AUGUST 31, 2025

GENERAL FUND

	PERIOD ACTUAL	YTD ACTUAL	BUDGET	UNEXPENDED	PCNT
<u>ADMINISTRATION</u>					
100-51-6000 SALARIES	44,850.53	75,957.49	411,991.00	336,033.51	18.4
100-51-6023 LEAVE CASHOUT	.00	.00	20,600.00	20,600.00	.0
100-51-6030 SOCIAL SECURITY EXPENSE	447.82	831.63	3,030.00	2,198.37	27.5
100-51-6031 PAYABLE MEDICARE FICA	658.42	1,117.11	5,974.00	4,856.89	18.7
100-51-6032 UNEMPLOYMENT	.00	.00	2,841.00	2,841.00	.0
100-51-6033 WORKERS' COMPENSATION	.00	.00	1,064.00	1,064.00	.0
100-51-6034 PERS	8,278.15	13,759.77	79,888.00	66,128.23	17.2
100-51-6040 EMPLOYEE GROUP BENEFITS	1,924.78	3,849.56	62,424.00	58,574.44	6.2
100-51-6041 UTILITY BENEFIT	586.80	1,173.60	4,560.00	3,386.40	25.7
100-51-6044 YK FITNESS CENTER MEMBERSHIP	.00	.00	40,000.00	40,000.00	.0
100-51-6060 TRAVEL/TRAINING	.00	.00	20,000.00	20,000.00	.0
100-51-6100 SUPPLIES	9.99	9.99	7,000.00	6,990.01	.1
100-51-6150 GASOLINE/DIESEL/OIL	210.63	303.63	2,000.00	1,696.37	15.2
100-51-6153 HEATING FUEL	793.65	1,269.84	32,000.00	30,730.16	4.0
100-51-6155 WATER/SEWER/GARBAGE	.00	.00	13,100.00	13,100.00	.0
100-51-6160 ELECTRICITY	.00	1,987.09	24,150.00	22,162.91	8.2
100-51-6170 TELEPHONE	408.32	859.58	11,254.00	10,394.42	7.6
100-51-6171 STAFF CELLULAR PHONES	.00	49.86	1,197.00	1,147.14	4.2
100-51-6179 IT (ICR)	.00	.00	37,588.00	37,588.00	.0
100-51-6230 VEHICLE MAINT/REPAIR	1,098.20	1,098.20	2,271.00	1,172.80	48.4
100-51-6325 CONSULTING FEES	.00	.00	20,000.00	20,000.00	.0
100-51-6333 JANITORIAL	.00	1,325.00	15,000.00	13,675.00	8.8
100-51-6335 OTHER PURCHASED SERVICES	2,361.60	4,994.20	142,500.00	137,505.80	3.5
100-51-6400 INSURANCE	.00	.00	32,666.00	32,666.00	.0
100-51-6401 INSURANCE-DED EXP & OTHER	.00	.00	10,000.00	10,000.00	.0
100-51-6430 ALLOWANCE FOR SPECIAL EVENTS	398.46	398.46	20,000.00	19,601.54	2.0
100-51-6500 DRUG TESTING/BCKGRND CKS	1,151.86	2,460.72	.00	(2,460.72)	.0
100-51-6503 DUES & SUBSCRIPTIONS	.00	200.00	2,000.00	1,800.00	10.0
100-51-6506 POSTAGE	.00	.00	1,000.00	1,000.00	.0
100-51-6539 MISCELLANEOUS EXPENSES	.00	.00	1,500.00	1,500.00	.0
100-51-6890 CAPITAL EXPENDITURES	.00	936.51	.00	(936.51)	.0
TOTAL ADMINISTRATION	63,179.21	112,582.24	1,027,598.00	915,015.76	11.0

CITY OF BETHEL
EXPENDITURES WITH COMPARISON TO BUDGET
FOR THE 2 MONTHS ENDING AUGUST 31, 2025

GENERAL FUND

	PERIOD ACTUAL	YTD ACTUAL	BUDGET	UNEXPENDED	PCNT
<u>CITY CLERKS OFFICE</u>					
100-52-6000 SALARIES	13,734.91	22,726.88	107,328.00	84,601.12	21.2
100-52-6023 LEAVE CASHOUT / PAYOUT	.00	.00	5,366.00	5,366.00	.0
100-52-6030 SOCIAL SECURITY EXPENSE	106.14	169.62	1,116.00	946.38	15.2
100-52-6031 PAYABLE MEDICARE FICA	201.59	334.42	1,556.00	1,221.58	21.5
100-52-6032 UNEMPLOYMENT	.00	.00	1,031.00	1,031.00	.0
100-52-6033 WORKERS' COMPENSATION	.00	.00	232.00	232.00	.0
100-52-6034 P.E.R.S.	2,645.07	4,398.07	23,612.00	19,213.93	18.6
100-52-6040 EMPLOYEE GROUP BENEFITS	1,019.40	2,038.80	20,808.00	18,769.20	9.8
100-52-6041 UTILITY BENEFIT	198.95	397.90	4,560.00	4,162.10	8.7
100-52-6060 TRAVEL/TRAINING-COUNCIL	.00	228.00	21,200.00	20,972.00	1.1
100-52-6061 TRAVEL/TRAINING	.00	.00	4,800.00	4,800.00	.0
100-52-6100 SUPPLIES-CLERK	.00	.00	500.00	500.00	.0
100-52-6101 SUPPLIES-COUNCIL	.00	.00	600.00	600.00	.0
100-52-6171 STAFF CELLULAR PHONES	.00	99.72	598.00	498.28	16.7
100-52-6179 IT (ICR)	.00	.00	37,588.00	37,588.00	.0
100-52-6321 LEGAL FEES	.00	.00	7,000.00	7,000.00	.0
100-52-6335 OTHER PURCHASED SERVICES	.00	318.50	34,270.00	33,951.50	.9
100-52-6400 INSURANCE	.00	.00	3,889.00	3,889.00	.0
100-52-6430 ALLOWANCE FOR SPECIAL EVENTS	.00	.00	600.00	600.00	.0
100-52-6502 ADVERTISING	.00	.00	20,000.00	20,000.00	.0
100-52-6503 DUES & SUBSCRIPTIONS	.00	6,507.52	7,195.00	687.48	90.5
100-52-6505 ELECTION EXPENSES	870.30	870.30	20,450.00	19,579.70	4.3
100-52-6507 DONATIONS & AWARDS	.00	.00	800.00	800.00	.0
TOTAL CITY CLERKS OFFICE	18,776.36	38,089.73	325,099.00	287,009.27	11.7

CITY OF BETHEL
EXPENDITURES WITH COMPARISON TO BUDGET
FOR THE 2 MONTHS ENDING AUGUST 31, 2025

GENERAL FUND

	PERIOD ACTUAL	YTD ACTUAL	BUDGET	UNEXPENDED	PCNT
<u>FINANCE</u>					
100-53-6000 SALARIES	52,185.87	82,396.19	572,674.00	490,277.81	14.4
100-53-6010 OVERTIME	284.13	497.03	10,000.00	9,502.97	5.0
100-53-6023 LEAVE CASHOUT	.00	.00	11,174.00	11,174.00	.0
100-53-6030 SOCIAL SECURITY EXPENSE	274.35	274.35	.00	(274.35)	.0
100-53-6031 PAYABLE MEDICARE FICA	782.87	1,246.33	8,449.00	7,202.67	14.8
100-53-6032 UNEMPLOYMENT	.00	.00	5,149.00	5,149.00	.0
100-53-6033 WORKERS' COMPENSATION	.00	.00	1,261.00	1,261.00	.0
100-53-6034 PERS	10,569.87	17,262.98	128,188.00	110,925.02	13.5
100-53-6040 EMPLOYEE GROUP BENEFITS	2,998.86	5,997.72	150,858.00	144,860.28	4.0
100-53-6041 UTILITY BENEFIT	1,652.17	3,320.70	33,060.00	29,739.30	10.0
100-53-6060 TRAVEL/TRAINING	.00	.00	20,000.00	20,000.00	.0
100-53-6100 SUPPLIES	40.75	1,245.57	10,000.00	8,754.43	12.5
100-53-6150 GASOLINE/DIESEL/OIL	.00	.00	1,200.00	1,200.00	.0
100-53-6170 TELEPHONE	8.35	16.70	100.00	83.30	16.7
100-53-6179 CONNECTIVITY SERVICES	.00	.00	37,588.00	37,588.00	.0
100-53-6200 MINOR EQUIPMENT	.00	.00	8,000.00	8,000.00	.0
100-53-6230 VEHICLE MAINT/REPAIR	.00	.00	2,271.00	2,271.00	.0
100-53-6310 ADMIN-OUTSOURCED SERVICES	.00	.00	110,000.00	110,000.00	.0
100-53-6311 AUDITING EXPENSE	41,561.31	41,561.31	205,500.00	163,938.69	20.2
100-53-6331 HARDWARE/SOFTWARE SUPPORT	3,538.00	3,538.00	32,904.00	29,366.00	10.8
100-53-6335 OTHER PROFESSIONAL FEES	.00	4,819.50	125,000.00	120,180.50	3.9
100-53-6400 INSURANCE	.00	.00	21,116.00	21,116.00	.0
100-53-6502 ADVERTISING	.00	.00	2,500.00	2,500.00	.0
100-53-6503 DUES & SUBSCRIPTIONS	.00	.00	5,000.00	5,000.00	.0
100-53-6506 POSTAGE	.00	.00	1,000.00	1,000.00	.0
100-53-6530 FINANCE CHARGES/PENALTIES	.00	.00	300.00	300.00	.0
100-53-6531 BANK CHARGES	.00	.00	52,500.00	52,500.00	.0
100-53-6533 IRS PENALTIES AND INTEREST	.00	(123.14)	2,000.00	2,123.14	(6.2)
100-53-6539 MISCELLANEOUS EXPENSES	.00	.00	4,000.00	4,000.00	.0
TOTAL FINANCE	113,896.53	162,053.24	1,561,792.00	1,399,738.76	10.4

CITY OF BETHEL
EXPENDITURES WITH COMPARISON TO BUDGET
FOR THE 2 MONTHS ENDING AUGUST 31, 2025

GENERAL FUND

	PERIOD ACTUAL	YTD ACTUAL	BUDGET	UNEXPENDED	PCNT
<u>PLANNING</u>					
100-54-6000 SALARIES	18,958.33	31,421.74	166,160.00	134,738.26	18.9
100-54-6010 OVERTIME	12.51	108.25	.00	(108.25)	.0
100-54-6023 LEAVE CASHOUT	.00	.00	3,323.00	3,323.00	.0
100-54-6031 PAYABLE MEDICARE FICA	284.65	476.33	2,409.00	1,932.67	19.8
100-54-6032 UNEMPLOYMENT	.00	.00	1,420.00	1,420.00	.0
100-54-6033 WORKERS' COMPENSATION	.00	.00	360.00	360.00	.0
100-54-6034 PERS	4,173.59	6,936.61	36,555.00	29,618.39	19.0
100-54-6040 EMPLOYEE GROUP BENEFITS	3,325.22	6,650.44	41,616.00	34,965.56	16.0
100-54-6041 UTILITY BENEFIT	789.65	1,579.30	9,120.00	7,540.70	17.3
100-54-6061 TRAVEL/TRAINING	.00	.00	10,000.00	10,000.00	.0
100-54-6100 SUPPLIES	.00	.00	4,200.00	4,200.00	.0
100-54-6150 GASOLINE/DIESEL/OIL	145.51	216.00	2,000.00	1,784.00	10.8
100-54-6153 HEATING FUEL	.00	.00	3,402.00	3,402.00	.0
100-54-6155 WATER/SEWER/GARBAGE	.00	.00	760.00	760.00	.0
100-54-6160 ELECTRICITY	.00	.00	3,930.00	3,930.00	.0
100-54-6170 TELEPHONE	3.34	6.68	.00	(6.68)	.0
100-54-6171 STAFF CELLULAR PHONES	.00	49.86	598.00	548.14	8.3
100-54-6179 IT (ICR)	.00	.00	37,588.00	37,588.00	.0
100-54-6230 VEHICLE MAINT/REPAIR	.00	.00	1,703.00	1,703.00	.0
100-54-6231 VEHICLE PARTS & TOOLS	.00	.00	1,000.00	1,000.00	.0
100-54-6320 OTHER PROFESSIONAL FEES	.00	.00	40,000.00	40,000.00	.0
100-54-6400 INSURANCE	.00	.00	7,666.00	7,666.00	.0
100-54-6502 ADVERTISING	1,160.40	1,160.40	3,000.00	1,839.60	38.7
100-54-6503 DUES & SUBSCRIPTIONS	.00	.00	1,000.00	1,000.00	.0
100-54-6539 MISCELLANEOUS EXPENSES	.00	.00	3,500.00	3,500.00	.0
TOTAL PLANNING	28,853.20	48,605.61	381,310.00	332,704.39	12.8
<u>TECHNOLOGY DEPARTMENTS</u>					
100-55-6150 GASOLINE/DIESEL/OIL	165.92	165.92	.00	(165.92)	.0
100-55-6171 STAFF CELLULAR PHONES	.00	126.32	.00	(126.32)	.0
100-55-6179 CONNECTIVITY SERVICES	23,809.63	48,303.50	339,526.00	291,222.50	14.2
100-55-6210 EQUIPMENT RENTAL	1,785.48	7,207.16	256,487.00	249,279.84	2.8
100-55-6320 OTHER PROFESSIONAL FEES	56,349.19	65,124.05	268,500.00	203,375.95	24.3
100-55-6331 HARDWARE/SOFTWARE SUPPORT	17,836.00	35,162.00	.00	(35,162.00)	.0
100-55-6700 INDIRECT COST RECOVERY	.00	.00	864,513.00	864,513.00	.0
100-55-6890 CAPITAL EXPENDITURES	.00	42,150.04	.00	(42,150.04)	.0
TOTAL TECHNOLOGY DEPARTMENTS	99,946.22	198,238.99	1,729,026.00	1,530,787.01	11.5

CITY OF BETHEL
EXPENDITURES WITH COMPARISON TO BUDGET
FOR THE 2 MONTHS ENDING AUGUST 31, 2025

GENERAL FUND

	PERIOD ACTUAL	YTD ACTUAL	BUDGET	UNEXPENDED	PCNT
<u>CITY ATTORNEY'S OFFICE</u>					
100-56-6000 SALARIES	18,601.02	30,928.76	161,999.00	131,070.24	19.1
100-56-6023 LEAVE CASHOUT	.00	.00	3,161.00	3,161.00	.0
100-56-6031 PAYABLE MEDICARE FICA	268.40	445.85	2,292.00	1,846.15	19.5
100-56-6032 UNEMPLOYMENT	.00	.00	710.00	710.00	.0
100-56-6033 WORKERS' COMPENSATION	.00	.00	342.00	342.00	.0
100-56-6034 PERS	4,092.21	6,804.31	35,640.00	28,835.69	19.1
100-56-6040 EMPLOYEE GROUP BENEFITS	1,894.78	3,789.56	20,808.00	17,018.44	18.2
100-56-6060 TRAVEL/TRAINING	.00	.00	12,000.00	12,000.00	.0
100-56-6171 STAFF CELLULAR PHONES	.00	49.86	598.00	548.14	8.3
100-56-6179 IT (ICR)	.00	.00	37,588.00	37,588.00	.0
100-56-6321 LEGAL FEES	433.00	3,248.90	15,000.00	11,751.10	21.7
100-56-6335 OTHER PURCHASED SERVICES	581.70	1,163.40	30,000.00	28,836.60	3.9
100-56-6400 INSURANCE	.00	.00	5,871.00	5,871.00	.0
100-56-6503 DUES & SUBSCRIPTIONS	.00	.00	1,000.00	1,000.00	.0
100-56-6539 MISCELLANEOUS EXPENSES	.00	.00	1,200.00	1,200.00	.0
 TOTAL CITY ATTORNEY'S OFFICE	 25,871.11	 46,430.64	 328,209.00	 281,778.36	 14.2

CITY OF BETHEL
EXPENDITURES WITH COMPARISON TO BUDGET
FOR THE 2 MONTHS ENDING AUGUST 31, 2025

GENERAL FUND

	PERIOD ACTUAL	YTD ACTUAL	BUDGET	UNEXPENDED	PCNT
<u>FIRE DEPARTMENT</u>					
100-60-6000 SALARIES	71,623.50	124,445.17	719,804.00	595,358.83	17.3
100-60-6010 FLSA OVERTIME	13,433.43	25,593.22	150,000.00	124,406.78	17.1
100-60-6011 CALL BACK OVERTIME	8,370.54	14,381.46	75,000.00	60,618.54	19.2
100-60-6023 LEAVE CASHOUT	.00	6,073.70	42,341.00	36,267.30	14.3
100-60-6030 SOCIAL SECURITY EXPENSE	340.17	340.17	1,550.00	1,209.83	22.0
100-60-6031 PAYABLE MEDICARE FICA	1,422.28	2,597.23	14,062.00	11,464.77	18.5
100-60-6032 UNEMPLOYMENT	.00	.00	7,812.00	7,812.00	.0
100-60-6033 WORKERS' COMPENSATION	.00	.00	36,596.00	36,596.00	.0
100-60-6034 PERS	19,582.98	35,201.30	207,857.00	172,655.70	16.9
100-60-6040 EMPLOYEE GROUP BENEFITS	6,890.50	13,781.00	228,888.00	215,107.00	6.0
100-60-6041 UTILITY BENEFIT	4,066.59	8,513.61	50,160.00	41,646.39	17.0
100-60-6060 TRAVEL/TRAINING	.00	725.99	59,800.00	59,074.01	1.2
100-60-6100 SUPPLIES	.00	1,101.22	27,400.00	26,298.78	4.0
100-60-6103 WEARING APPAREL	.00	278.77	20,800.00	20,521.23	1.3
100-60-6150 GASOLINE/DIESEL/OIL	2,067.61	3,664.27	26,000.00	22,335.73	14.1
100-60-6153 HEATING FUEL	.00	.00	40,000.00	40,000.00	.0
100-60-6155 WATER/SEWER/GARBAGE	.00	.00	22,000.00	22,000.00	.0
100-60-6160 ELECTRICITY	.00	1,785.37	20,000.00	18,214.63	8.9
100-60-6170 TELEPHONE	243.59	487.79	2,932.00	2,444.21	16.6
100-60-6171 STAFF CELLULAR PHONES	.00	228.57	2,992.00	2,763.43	7.6
100-60-6179 IT (ICR)	.00	.00	37,588.00	37,588.00	.0
100-60-6200 MINOR EQUIPMENT	.00	.00	15,000.00	15,000.00	.0
100-60-6230 VEHICLE MAINT/REPAIR	1,257.07	2,329.65	20,375.00	18,045.35	11.4
100-60-6231 VEHICLE PARTS & TOOLS	2,316.36	3,347.63	35,000.00	31,652.37	9.6
100-60-6240 PROPERTY MAINT	.00	945.23	20,000.00	19,054.77	4.7
100-60-6335 OTHER PURCHASED SERVICES	.00	1,875.95	31,000.00	29,124.05	6.1
100-60-6400 INSURANCE	.00	.00	94,386.00	94,386.00	.0
100-60-6502 ADVERTISING	.00	.00	500.00	500.00	.0
100-60-6503 DUES & SUBSCRIPTIONS	.00	.00	15,200.00	15,200.00	.0
100-60-6534 COLLECTION/SMALL CLAIMS	.00	.00	31,200.00	31,200.00	.0
100-60-6537 FIRE PREVENTION PROGRAM	.00	.00	7,500.00	7,500.00	.0
100-60-6539 MISCELLANEOUS EXPENSES	.00	.00	1,500.00	1,500.00	.0
100-60-6660 XFER TO F-58 FLEET REPLACEMENT	.00	.00	80,000.00	80,000.00	.0
100-60-6890 CAPITAL EXPENDITURES	.00	106,200.36	.00	(106,200.36)	.0
100-60-6891 CAPITAL EXP-LADDER TRUCK LEASE	.00	.00	71,218.00	71,218.00	.0
100-60-9649 VOLUNTEER STIPEND	1,073.00	1,073.00	25,000.00	23,927.00	4.3
TOTAL FIRE DEPARTMENT	132,687.62	354,970.66	2,241,461.00	1,886,490.34	15.8

CITY OF BETHEL
EXPENDITURES WITH COMPARISON TO BUDGET
FOR THE 2 MONTHS ENDING AUGUST 31, 2025

GENERAL FUND

	PERIOD ACTUAL	YTD ACTUAL	BUDGET	UNEXPENDED	PCNT
<u>POLICE</u>					
100-61-6000 SALARIES	237,511.16	416,540.11	2,386,711.00	1,970,170.89	17.5
100-61-6002 RELOCATION EXPENSES	.00	.00	10,000.00	10,000.00	.0
100-61-6010 OVERTIME	40,187.81	74,750.19	266,208.00	191,457.81	28.1
100-61-6023 LEAVE CASHOUT	10,950.92	20,035.27	139,710.00	119,674.73	14.3
100-61-6031 PAYABLE MEDICARE FICA	4,251.22	7,545.35	38,467.00	30,921.65	19.6
100-61-6032 UNEMPLOYMENT	.00	.00	19,815.00	19,815.00	.0
100-61-6033 WORKERS' COMPENSATION	.00	.00	65,235.00	65,235.00	.0
100-61-6034 PERS	61,093.73	108,083.82	583,642.00	475,558.18	18.5
100-61-6040 EMPLOYEE GROUP BENEFITS	32,731.64	62,393.95	601,351.00	538,957.05	10.4
100-61-6041 UTILITY BENEFIT	6,549.74	12,847.96	131,784.00	118,936.04	9.8
100-61-6060 TRAVEL/TRAINING	64.95	544.95	80,000.00	79,455.05	.7
100-61-6100 SUPPLIES	1,874.47	8,285.99	32,000.00	23,714.01	25.9
100-61-6102 SART EXAMS	.00	.00	20,000.00	20,000.00	.0
100-61-6103 EMPLOYEE WEARING APPAREL	235.14	502.09	32,400.00	31,897.91	1.6
100-61-6150 GASOLINE/DIESEL/OIL	4,574.98	8,982.12	60,000.00	51,017.88	15.0
100-61-6153 HEATING FUEL	1,668.26	5,264.02	52,000.00	46,735.98	10.1
100-61-6155 WATER/SEWER/GARBAGE	.00	.00	16,000.00	16,000.00	.0
100-61-6160 ELECTRICITY	.00	4,983.56	56,000.00	51,016.44	8.9
100-61-6170 TELEPHONE	2,583.96	5,174.72	17,129.00	11,954.28	30.2
100-61-6171 STAFF CELLULAR PHONES	.00	879.61	11,366.00	10,486.39	7.7
100-61-6179 IT (ICR)	.00	.00	37,588.00	37,588.00	.0
100-61-6200 MINOR EQUIPMENT	940.57	3,485.07	25,000.00	21,514.93	13.9
100-61-6230 VEHICLE MAINT/REPAIR	.00	.00	23,388.00	23,388.00	.0
100-61-6231 VEHICLE PARTS & TOOLS	3,514.73	3,941.46	35,000.00	31,058.54	11.3
100-61-6335 OTHER PURCHASED SERVICES	184.54	(213.86)	80,000.00	80,213.86	(.3)
100-61-6400 INSURANCE	.00	.00	136,381.00	136,381.00	.0
100-61-6503 DUES & SUBSCRIPTIONS	.00	90.00	6,000.00	5,910.00	1.5
100-61-6890 CAP EXP	.00	4,981.25	.00	(4,981.25)	.0
TOTAL POLICE	408,917.82	749,097.63	4,963,175.00	4,214,077.37	15.1

CITY OF BETHEL
EXPENDITURES WITH COMPARISON TO BUDGET
FOR THE 2 MONTHS ENDING AUGUST 31, 2025

GENERAL FUND

	PERIOD ACTUAL	YTD ACTUAL	BUDGET	UNEXPENDED	PCNT
<u>PUBLIC WORKS-ADMIN</u>					
100-65-6000 SALARIES	3,376.38	5,613.97	49,989.00	44,375.03	11.2
100-65-6010 OVERTIME	5.72	24.20	.00	(24.20)	.0
100-65-6023 LEAVE CASHOUT	.00	.00	975.00	975.00	.0
100-65-6031 PAYABLE MEDICARE FICA	49.12	81.93	725.00	643.07	11.3
100-65-6032 UNEMPLOYMENT	.00	.00	890.00	890.00	.0
100-65-6033 WORKERS' COMPENSATION	.00	.00	108.00	108.00	.0
100-65-6034 PERS	744.05	1,240.39	10,998.00	9,757.61	11.3
100-65-6040 EMPLOYEE GROUP BENEFITS	432.70	865.34	10,404.00	9,538.66	8.3
100-65-6041 UTILITY BENEFIT	29.84	59.68	2,280.00	2,220.32	2.6
100-65-6060 TRAVEL/TRAINING	.00	.00	10,000.00	10,000.00	.0
100-65-6100 SUPPLIES	79.40	168.21	4,000.00	3,831.79	4.2
100-65-6150 GASOLINE/DIESEL/OIL	123.53	591.73	2,000.00	1,408.27	29.6
100-65-6153 HEATING FUEL	2,958.20	3,473.55	9,000.00	5,526.45	38.6
100-65-6155 WATER/SEWER/GARBAGE	.00	.00	500.00	500.00	.0
100-65-6160 ELECTRICITY	.00	6,017.73	1,725.00	(4,292.73)	348.9
100-65-6170 TELEPHONE	3.34	6.68	1,617.00	1,610.32	.4
100-65-6171 STAFF CELLULAR PHONES	.00	49.86	598.00	548.14	8.3
100-65-6179 IT (ICR)	.00	.00	37,588.00	37,588.00	.0
100-65-6230 VEHICLE MAINT/REPAIR	.00	.00	4,882.00	4,882.00	.0
100-65-6231 VEHICLE PARTS & TOOLS	180.08	175.87	3,000.00	2,824.13	5.9
100-65-6335 OTHER PURCHASED SERVICES	.00	.00	15,000.00	15,000.00	.0
100-65-6400 INSURANCE	.00	.00	2,551.00	2,551.00	.0
100-65-6503 DUES & SUBSCRIPTIONS	.00	.00	500.00	500.00	.0
100-65-6539 MISCELLANEOUS EXPENSES	.00	.00	3,000.00	3,000.00	.0
TOTAL PUBLIC WORKS-ADMIN	7,982.36	18,369.14	172,330.00	153,960.86	10.7

CITY OF BETHEL
EXPENDITURES WITH COMPARISON TO BUDGET
FOR THE 2 MONTHS ENDING AUGUST 31, 2025

GENERAL FUND

	PERIOD ACTUAL	YTD ACTUAL	BUDGET	UNEXPENDED	PCNT
<u>PW-STREETS & ROADS</u>					
100-66-6000 SALARIES	51,955.26	86,036.40	520,950.00	434,913.60	16.5
100-66-6010 OVERTIME	512.69	685.05	35,000.00	34,314.95	2.0
100-66-6023 LEAVE CASHOUT	.00	.00	13,403.00	13,403.00	.0
100-66-6030 SOCIAL SECURITY EXPENSE	524.06	784.46	3,906.00	3,121.54	20.1
100-66-6031 PAYABLE MEDICARE FICA	774.47	1,282.61	8,061.00	6,778.39	15.9
100-66-6032 UNEMPLOYMENT	.00	.00	4,850.00	4,850.00	.0
100-66-6033 WORKERS' COMPENSATION	.00	.00	17,368.00	17,368.00	.0
100-66-6034 PERS	9,683.39	16,020.47	108,449.00	92,428.53	14.8
100-66-6040 EMPLOYEE GROUP BENEFITS	7,207.56	19,764.36	109,242.00	89,477.64	18.1
100-66-6041 UTILITY BENEFIT	1,445.82	2,891.64	23,940.00	21,048.36	12.1
100-66-6100 SUPPLIES	261.75	500.99	4,500.00	3,999.01	11.1
100-66-6103 WEARING APPAREL	.00	.00	5,000.00	5,000.00	.0
100-66-6111 SIGNS	1,187.50	1,187.50	6,000.00	4,812.50	19.8
100-66-6131 STREET MAINT GRAVEL	200,077.60	434,350.64	200,000.00	(234,350.64)	217.2
100-66-6132 SALT	.00	.00	30,000.00	30,000.00	.0
100-66-6150 GASOLINE/DIESEL/OIL	886.24	3,781.39	100,000.00	96,218.61	3.8
100-66-6153 HEATING FUEL	.00	211.64	62,500.00	62,288.36	.3
100-66-6155 WATER/SEWER/GARBAGE	.00	.00	6,750.00	6,750.00	.0
100-66-6160 ELECTRICITY	.00	.00	18,000.00	18,000.00	.0
100-66-6161 ELECTRICITY (STREET LTS)	.00	3,254.25	68,816.00	65,561.75	4.7
100-66-6170 TELEPHONE	1.67	3.34	.00	(3.34)	.0
100-66-6171 STAFF CELLULAR PHONES	.00	49.86	598.00	548.14	8.3
100-66-6179 IT (ICR)	.00	.00	37,588.00	37,588.00	.0
100-66-6200 MINOR EQUIPMENT	9,109.73	9,109.73	10,000.00	890.27	91.1
100-66-6230 VEHICLE MAINT/REPAIR	.00	.00	173,745.00	173,745.00	.0
100-66-6231 VEHICLE PARTS & TOOLS	9,098.86	12,634.54	95,000.00	82,365.46	13.3
100-66-6250 STREET LIGHT MT & POLE RENTAL	.00	.00	20,000.00	20,000.00	.0
100-66-6335 OTHER PURCHASED SERVICES	.00	.00	10,000.00	10,000.00	.0
100-66-6400 INSURANCE	.00	.00	68,574.00	68,574.00	.0
100-66-6892 CAPTIAL EQUIPMENT	.00	335,665.25	185,357.00	(150,308.25)	181.1
TOTAL PW-STREETS & ROADS	292,726.60	928,214.12	1,947,597.00	1,019,382.88	47.7

CITY OF BETHEL
EXPENDITURES WITH COMPARISON TO BUDGET
FOR THE 2 MONTHS ENDING AUGUST 31, 2025

GENERAL FUND

	PERIOD ACTUAL	YTD ACTUAL	BUDGET	UNEXPENDED	PCNT
<u>PROPERTY MAINTENANCE</u>					
100-70-6000 SALARIES	32,046.25	56,831.01	366,415.00	309,583.99	15.5
100-70-6010 OVERTIME	4,158.67	7,022.43	50,000.00	42,977.57	14.0
100-70-6023 LEAVE CASHOUT	.00	5,253.60	7,164.00	1,910.40	73.3
100-70-6030 SOCIAL SECURITY EXPENSE	298.92	574.58	1,786.00	1,211.42	32.2
100-70-6031 PAYABLE MEDICARE FICA	539.28	1,043.23	6,038.00	4,994.77	17.3
100-70-6032 UNEMPLOYMENT	.00	.00	4,064.00	4,064.00	.0
100-70-6033 WORKERS' COMPENSATION	.00	.00	10,883.00	10,883.00	.0
100-70-6034 PERS	6,904.39	12,008.96	85,275.00	73,266.04	14.1
100-70-6040 EMPLOYEE GROUP BENEFITS	4,274.84	8,549.61	104,040.00	95,490.39	8.2
100-70-6041 UTILITY BENEFIT	1,287.05	3,440.14	22,800.00	19,359.86	15.1
100-70-6060 TRAVEL/TRAINING	.00	.00	8,000.00	8,000.00	.0
100-70-6100 SUPPLIES	.00	6,986.62	29,000.00	22,013.38	24.1
100-70-6103 WEARING APPAREL	.00	1,411.85	5,000.00	3,588.15	28.2
100-70-6107 ELECTRICAL SUPPLIES	174.84	174.84	.00	(174.84)	.0
100-70-6110 MATERIALS	5.19	5.19	.00	(5.19)	.0
100-70-6142 GLYCOL SUPPLIES	.00	.00	10,000.00	10,000.00	.0
100-70-6150 GASOLINE/DIESEL/OIL	1,042.19	2,102.68	30,000.00	27,897.32	7.0
100-70-6153 HEATING FUEL	529.10	1,322.75	25,000.00	23,677.25	5.3
100-70-6155 WATER/SEWER/GARBAGE	.00	.00	8,000.00	8,000.00	.0
100-70-6160 ELECTRICITY	.00	816.04	13,340.00	12,523.96	6.1
100-70-6170 TELEPHONE	1.67	3.34	.00	(3.34)	.0
100-70-6171 STAFF CELLULAR PHONES	.00	95.17	1,197.00	1,101.83	8.0
100-70-6179 IT (ICR)	.00	.00	37,588.00	37,588.00	.0
100-70-6200 MINOR EQUIPMENT	.00	571.10	8,000.00	7,428.90	7.1
100-70-6201 BOILER EXPENSE	2,052.00	3,695.71	25,000.00	21,304.29	14.8
100-70-6230 VEHICLE MAINT/REPAIR	.00	.00	7,039.00	7,039.00	.0
100-70-6231 VEHICLE PARTS & TOOLS	.00	.00	5,000.00	5,000.00	.0
100-70-6240 WIND TURBINE CONTRACT	.00	261.54	14,400.00	14,138.46	1.8
100-70-6241 PARKS MAINTENANCE	111.98	1,231.08	55,000.00	53,768.92	2.2
100-70-6335 OTHER PURCHASED SERVICES	2,640.00	2,640.00	56,000.00	53,360.00	4.7
100-70-6400 INSURANCE	.00	.00	18,795.00	18,795.00	.0
100-70-6510 4TH OF JULY	.00	203.06	1,000.00	796.94	20.3
100-70-6539 MISCELLANEOUS EXPENSES	130.48	130.48	5,000.00	4,869.52	2.6
100-70-6700 INDIRECT COST RECOVERY	.00	.00	(438,167.00)	(438,167.00)	.0
100-70-6890 CAPITAL EXPENDITURES	.00	.00	177,450.00	177,450.00	.0
TOTAL PROPERTY MAINTENANCE	56,196.85	116,375.01	760,107.00	643,731.99	15.3

CITY OF BETHEL
EXPENDITURES WITH COMPARISON TO BUDGET
FOR THE 2 MONTHS ENDING AUGUST 31, 2025

GENERAL FUND

	PERIOD ACTUAL	YTD ACTUAL	BUDGET	UNEXPENDED	PCNT
<u>DEPARTMENT 71</u>					
100-71-6000 SALARIES	41,420.21	50,435.71	470,387.00	419,951.29	10.7
100-71-6010 OVERTIME	.00	.00	2,000.00	2,000.00	.0
100-71-6023 LEAVE CASHOUT	.00	.00	11,808.00	11,808.00	.0
100-71-6030 SOCIAL SECURITY EXPENSE	1,125.07	1,125.07	7,316.00	6,190.93	15.4
100-71-6031 PAYABLE MEDICARE FICA	603.45	737.06	6,850.00	6,112.94	10.8
100-71-6032 UNEMPLOYMENT	.00	.00	5,082.00	5,082.00	.0
100-71-6033 WORKERS' COMPENSATION	.00	.00	12,203.00	12,203.00	.0
100-71-6034 PERS	5,120.29	7,103.70	86,660.00	79,556.30	8.2
100-71-6040 EMPLOYEE GROUP BENEFITS	.00	.00	62,424.00	62,424.00	.0
100-71-6041 UTILITY BENEFIT	198.95	397.90	18,240.00	17,842.10	2.2
100-71-6060 TRAVEL/TRAINING	.00	.00	14,000.00	14,000.00	.0
100-71-6100 SUPPLIES	.00	2,742.79	121,000.00	118,257.21	2.3
100-71-6110 COMMUNITY FAIR SUPPORT EXP	226.99	226.99	16,100.00	15,873.01	1.4
100-71-6150 GASOLINE/DIESEL/OIL	.00	.00	2,000.00	2,000.00	.0
100-71-6153 HEATING FUEL	.00	.00	210,000.00	210,000.00	.0
100-71-6155 WATER/SEWER/GARBAGE	.00	.00	80,000.00	80,000.00	.0
100-71-6160 ELECTRICITY	.00	.00	115,000.00	115,000.00	.0
100-71-6171 CELL PHONE	.00	49.86	1,197.00	1,147.14	4.2
100-71-6179 IT (ICR)	.00	.00	37,588.00	37,588.00	.0
100-71-6200 MINOR EQUIPMENT	.00	.00	6,000.00	6,000.00	.0
100-71-6230 VEHICLE MAINT/REPAIR	.00	.00	1,132.00	1,132.00	.0
100-71-6335 OTHER PURCHASED SERVICES	.00	.00	62,000.00	62,000.00	.0
100-71-6400 INSURANCE	.00	.00	85,694.00	85,694.00	.0
100-71-6430 ALLOWANCE FOR SPECIAL EVENTS	.00	.00	2,000.00	2,000.00	.0
100-71-6502 ADVERTISING	.00	.00	2,000.00	2,000.00	.0
100-71-6503 DUES & SUBSCRIPTIONS	.00	.00	1,000.00	1,000.00	.0
TOTAL DEPARTMENT 71	48,694.96	62,819.08	1,439,681.00	1,376,861.92	4.4
<u>COMMUNITY SERVICE</u>					
100-72-6155 SENIOR CTR - W/S/G ONC	.00	.00	118,300.00	118,300.00	.0
100-72-6171 BETHEL FRIENDS OF CANINES	.00	.00	115,000.00	115,000.00	.0
100-72-6430 COMMUNITY ACTION GRANT	.00	.00	78,953.00	78,953.00	.0
100-72-6508 KUSKO 300 RACE DONATION	.00	.00	5,000.00	5,000.00	.0
100-72-6509 LIBRARY CONTRIBUTION	.00	.00	129,400.00	129,400.00	.0
TOTAL COMMUNITY SERVICE	.00	.00	446,653.00	446,653.00	.0
<u>IN KIND MATCH & TRASFERS</u>					
100-73-6643 CASH XFER- FUND	.00	.00	257,459.00	257,459.00	.0
100-73-6647 CASH XFER-FLEET REPLACE FUND	.00	.00	80,000.00	80,000.00	.0
TOTAL IN KIND MATCH & TRASFERS	.00	.00	337,459.00	337,459.00	.0
TOTAL FUND EXPENDITURES	1,297,728.84	2,835,846.09	17,661,497.00	14,825,650.91	16.1

CITY OF BETHEL
 EXPENDITURES WITH COMPARISON TO BUDGET
 FOR THE 2 MONTHS ENDING AUGUST 31, 2025

GENERAL FUND

	PERIOD ACTUAL	YTD ACTUAL	BUDGET	UNEXPENDED	PCNT
NET REVENUE OVER EXPENDITURES	(510,458.87)	(954,288.08)	(1,619,595.00)	(665,306.92)	(58.9)

CITY OF BETHEL
 REVENUES WITH COMPARISON TO BUDGET
 FOR THE 2 MONTHS ENDING AUGUST 31, 2025

COMMUNITY SERVICE PATROL GRANT

	PERIOD ACTUAL	YTD ACTUAL	BUDGET	UNEARNED	PCNT
270-42-4200 GRANT REVENUE	(20,065.74)	(20,065.74)	.00	20,065.74	.0
TOTAL SOURCE 42	(20,065.74)	(20,065.74)	.00	20,065.74	.0
TOTAL FUND REVENUE	(20,065.74)	(20,065.74)	.00	20,065.74	.0

CITY OF BETHEL
EXPENDITURES WITH COMPARISON TO BUDGET
FOR THE 2 MONTHS ENDING AUGUST 31, 2025

COMMUNITY SERVICE PATROL GRANT

	PERIOD ACTUAL	YTD ACTUAL	BUDGET	UNEXPENDED	PCNT
<u>CSP PROGRAM</u>					
270-50-6000 SALARIES	13,619.97	22,453.90	181,666.00	159,212.10	12.4
270-50-6010 OVERTIME	166.37	1,641.81	5,000.00	3,358.19	32.8
270-50-6023 LEAVE CASHOUT	.00	2,826.71	8,569.00	5,742.29	33.0
270-50-6031 PAYABLE MEDICARE FICA	201.53	393.62	2,707.00	2,313.38	14.5
270-50-6032 UNEMPLOYMENT	.00	.00	2,131.00	2,131.00	.0
270-50-6033 WORKERS' COMPENSATION	.00	.00	4,590.00	4,590.00	.0
270-50-6034 PERS	3,032.99	5,301.05	41,067.00	35,765.95	12.9
270-50-6040 EMPLOYEE GROUP BENEFITS	1,978.92	3,957.84	62,424.00	58,466.16	6.3
270-50-6041 UTILITY BENEFIT	251.73	503.46	13,680.00	13,176.54	3.7
270-50-6100 SUPPLIES	.00	.00	4,000.00	4,000.00	.0
270-50-6103 WEARING APPAREL	.00	.00	1,800.00	1,800.00	.0
270-50-6150 GASOLINE/DIESEL/OIL	793.53	1,916.36	16,000.00	14,083.64	12.0
270-50-6153 HEATING FUEL	.00	.00	100.00	100.00	.0
270-50-6171 STAFF CELLULAR PHONES	.00	149.58	800.00	650.42	18.7
270-50-6400 INSURANCE	.00	.00	8,070.00	8,070.00	.0
 TOTAL CSP PROGRAM	 20,045.04	 39,144.33	 352,604.00	 313,459.67	 11.1
 TOTAL FUND EXPENDITURES	 20,045.04	 39,144.33	 352,604.00	 313,459.67	 11.1
 NET REVENUE OVER EXPENDITURES	 (40,110.78)	 (59,210.07)	 (352,604.00)	 (293,393.93)	 (16.8)

CITY OF BETHEL
EXPENDITURES WITH COMPARISON TO BUDGET
FOR THE 2 MONTHS ENDING AUGUST 31, 2025

YK REG AQUA HLTH & SAFETY CTR

	PERIOD ACTUAL	YTD ACTUAL	BUDGET	UNEXPENDED	PCNT
<u>LOCAL FUNDED EXPENDITURES</u>					
400-50-6150 GASOLINE/DIESEL/OIL	.00	99.76	.00	(99.76)	.0
400-50-6153 HEATING FUEL	11,904.75	23,767.71	.00	(23,767.71)	.0
400-50-6160 ELECTRICITY	.00	9,818.28	.00	(9,818.28)	.0
400-50-6170 TELEPHONE	126.02	252.36	.00	(252.36)	.0
400-50-6320 OTHER PROFESSIONAL FEES	15,163.00	30,061.75	.00	(30,061.75)	.0
400-50-6326 CONTRACTOR FEES	.00	29,300.49	.00	(29,300.49)	.0
400-50-6335 OTHER PURCHASED SERVICES	24,500.00	24,500.00	.00	(24,500.00)	.0
TOTAL LOCAL FUNDED EXPENDITURES	51,693.77	117,800.35	.00	(117,800.35)	.0
TOTAL FUND EXPENDITURES	51,693.77	117,800.35	.00	(117,800.35)	.0
NET REVENUE OVER EXPENDITURES	(51,693.77)	(117,800.35)	.00	117,800.35	.0

CITY OF BETHEL
 REVENUES WITH COMPARISON TO BUDGET
 FOR THE 2 MONTHS ENDING AUGUST 31, 2025

E-911 SYSTEM/SURCHARGE

	<u>PERIOD ACTUAL</u>	<u>YTD ACTUAL</u>	<u>BUDGET</u>	<u>UNEARNED</u>	<u>PCNT</u>
<u>E-911 SURCHARGE</u>					
410-42-4428 SURCHARGE FROM UNITED UTL	12,257.07	24,570.56	148,000.00	123,429.44	16.6
TOTAL E-911 SURCHARGE	12,257.07	24,570.56	148,000.00	123,429.44	16.6
TOTAL FUND REVENUE	12,257.07	24,570.56	148,000.00	123,429.44	16.6

CITY OF BETHEL
EXPENDITURES WITH COMPARISON TO BUDGET
FOR THE 2 MONTHS ENDING AUGUST 31, 2025

E-911 SYSTEM/SURCHARGE

	PERIOD ACTUAL	YTD ACTUAL	BUDGET	UNEXPENDED	PCNT
<u>E-911 SERVICES</u>					
410-50-6000 SALARIES	7,079.37	12,954.45	69,445.00	56,490.55	18.7
410-50-6010 OVERTIME	419.80	591.20	.00	(591.20)	.0
410-50-6023 LEAVE CASHOUT	.00	.00	3,388.00	3,388.00	.0
410-50-6030 SOCIAL SECURITY EXPENSE	362.78	669.95	.00	(669.95)	.0
410-50-6031 PAYABLE MEDICARE FICA	109.90	198.75	1,007.00	808.25	19.7
410-50-6032 UNEMPLOYMENT	.00	.00	971.00	971.00	.0
410-50-6033 WORKERS' COMPENSATION	.00	.00	1,708.00	1,708.00	.0
410-50-6034 PERS	362.49	602.73	15,278.00	14,675.27	4.0
410-50-6040 EMPLOYEE GROUP BENEFITS	233.58	467.16	22,889.00	22,421.84	2.0
410-50-6041 UTILITY BENEFIT	86.60	173.20	5,016.00	4,842.80	3.5
410-50-6400 INSURANCE	.00	.00	2,516.00	2,516.00	.0
410-50-6410 RENTS & LEASES	.00	.00	13,000.00	13,000.00	.0
TOTAL E-911 SERVICES	<u>8,654.52</u>	<u>15,657.44</u>	<u>135,218.00</u>	<u>119,560.56</u>	<u>11.6</u>
TOTAL FUND EXPENDITURES	<u>8,654.52</u>	<u>15,657.44</u>	<u>135,218.00</u>	<u>119,560.56</u>	<u>11.6</u>
NET REVENUE OVER EXPENDITURES	<u><u>3,602.55</u></u>	<u><u>8,913.12</u></u>	<u><u>12,782.00</u></u>	<u><u>3,868.88</u></u>	<u><u>69.7</u></u>

CITY OF BETHEL
 REVENUES WITH COMPARISON TO BUDGET
 FOR THE 2 MONTHS ENDING AUGUST 31, 2025

SOLID WASTE SERVICES

	PERIOD ACTUAL	YTD ACTUAL	BUDGET	UNEARNED	PCNT
<u>SOLID WASTE & RECYLING</u>					
500-44-4396 COMMERCIAL GARBAGE PICKUP	89,459.52	179,566.52	862,756.00	683,189.48	20.8
500-44-4397 LANDFILL DUMP FEE	34,898.00	65,244.00	315,888.00	250,644.00	20.7
500-44-4398 RESIDENTIAL GARBAGE PICKUP	24,019.29	47,980.59	292,594.00	244,613.41	16.4
TOTAL SOLID WASTE & RECYLING	148,376.81	292,791.11	1,471,238.00	1,178,446.89	19.9
TOTAL FUND REVENUE	148,376.81	292,791.11	1,471,238.00	1,178,446.89	19.9

CITY OF BETHEL
EXPENDITURES WITH COMPARISON TO BUDGET
FOR THE 2 MONTHS ENDING AUGUST 31, 2025

SOLID WASTE SERVICES

	PERIOD ACTUAL	YTD ACTUAL	BUDGET	UNEXPENDED	PCNT
<u>HAULED REFUSE</u>					
500-70-6000 SALARIES	17,876.13	27,629.38	149,518.00	121,888.62	18.5
500-70-6010 OVERTIME	1.91	8.07	10,250.00	10,241.93	.1
500-70-6023 LEAVE CASHOUT	.00	.00	5,886.00	5,886.00	.0
500-70-6030 SOCIAL SECURITY EXPENSE	266.23	313.35	1,790.00	1,476.65	17.5
500-70-6031 PAYABLE MEDICARE FICA	261.14	404.56	2,317.00	1,912.44	17.5
500-70-6032 UNEMPLOYMENT	.00	.00	1,632.00	1,632.00	.0
500-70-6033 WORKERS' COMPENSATION	.00	.00	7,709.00	7,709.00	.0
500-70-6034 PERS	2,988.47	4,968.35	28,799.00	23,830.65	17.3
500-70-6040 EMPLOYEE GROUP BENEFITS	1,133.74	2,267.41	22,889.00	20,621.59	9.9
500-70-6041 UTILITY BENEFIT	208.90	417.80	5,016.00	4,598.20	8.3
500-70-6100 SUPPLIES	.00	.00	1,000.00	1,000.00	.0
500-70-6103 WEARING APPAREL	.00	.00	1,000.00	1,000.00	.0
500-70-6121 4 YD DUMPSTERS	.00	.00	60,000.00	60,000.00	.0
500-70-6150 GASOLINE/DIESEL/OIL	.00	.00	40,000.00	40,000.00	.0
500-70-6230 VEHICLE MAINT/REPAIR	.00	.00	80,578.00	80,578.00	.0
500-70-6231 VEHICLE PARTS & TOOLS	112.55	6,492.98	20,000.00	13,507.02	32.5
500-70-6232 TIRES & WHEELS	.00	.00	8,000.00	8,000.00	.0
500-70-6335 OTHER PURCHASED SERVICES	.00	145.86	1,000.00	854.14	14.6
500-70-6400 INSURANCE	.00	.00	13,464.00	13,464.00	.0
500-70-6710 ADMIN OVERHEAD-GF	.00	.00	91,937.00	91,937.00	.0
500-70-9694 SINGLE AXLE REAR LOADER	.00	.00	185,424.00	185,424.00	.0
	<hr/>	<hr/>	<hr/>	<hr/>	<hr/>
TOTAL HAULED REFUSE	22,849.07	42,647.76	738,209.00	695,561.24	5.8

CITY OF BETHEL
EXPENDITURES WITH COMPARISON TO BUDGET
FOR THE 2 MONTHS ENDING AUGUST 31, 2025

SOLID WASTE SERVICES

	PERIOD ACTUAL	YTD ACTUAL	BUDGET	UNEXPENDED	PCNT
<u>LANDFILL OPERATIONS</u>					
500-71-6000 SALARIES	14,866.62	24,794.07	159,202.00	134,407.93	15.6
500-71-6010 OVERTIME	1,509.29	2,394.37	35,000.00	32,605.63	6.8
500-71-6023 LEAVE CASHOUT	.00	.00	7,766.00	7,766.00	.0
500-71-6031 PAYABLE MEDICARE FICA	250.26	419.87	2,816.00	2,396.13	14.9
500-71-6032 UNEMPLOYMENT	.00	.00	2,782.00	2,782.00	.0
500-71-6033 WORKERS' COMPENSATION	.00	.00	5,316.00	5,316.00	.0
500-71-6034 PERS	3,602.68	5,981.46	42,724.00	36,742.54	14.0
500-71-6040 EMPLOYEE GROUP BENEFITS	1,133.74	2,267.41	54,101.00	51,833.59	4.2
500-71-6041 UTILITY BENEFIT	961.93	1,923.86	11,856.00	9,932.14	16.2
500-71-6060 TRAVEL/TRAINING	.00	.00	5,000.00	5,000.00	.0
500-71-6100 SUPPLIES	1,102.93	1,748.63	33,000.00	31,251.37	5.3
500-71-6103 WEARING APPAREL	.00	.00	3,000.00	3,000.00	.0
500-71-6150 GASOLINE/DIESEL/OIL	243.51	2,210.72	15,000.00	12,789.28	14.7
500-71-6153 HEATING FUEL	1,741.51	1,741.51	18,000.00	16,258.49	9.7
500-71-6160 ELECTRICITY	.00	220.03	5,700.00	5,479.97	3.9
500-71-6171 STAFF CELLULAR PHONES	.00	49.86	598.00	548.14	8.3
500-71-6179 IT (ICR)	.00	.00	37,588.00	37,588.00	.0
500-71-6200 MINOR EQUIPMENT	.00	.00	7,500.00	7,500.00	.0
500-71-6230 VEHICLE MAINT/REPAIR	.00	.00	90,828.00	90,828.00	.0
500-71-6231 VEHICLE PARTS & TOOLS	5,823.50	8,451.67	20,000.00	11,548.33	42.3
500-71-6240 PROPERTY MAINT	.00	.00	30,625.00	30,625.00	.0
500-71-6335 OTHER PURCHASED SERVICES	.00	.00	4,000.00	4,000.00	.0
500-71-6400 INSURANCE	.00	.00	16,513.00	16,513.00	.0
500-71-6503 DUES & SUBSCRIPTIONS	.00	.00	10,000.00	10,000.00	.0
500-71-6539 MISCELLANEOUS EXPENSES	.00	.00	4,000.00	4,000.00	.0
500-71-6599 LANDFILL CLOSURE COSTS	.00	.00	82,302.00	82,302.00	.0
500-71-6710 ADMIN OVERHEAD-GF	.00	.00	91,937.00	91,937.00	.0
TOTAL LANDFILL OPERATIONS	31,235.97	52,203.46	797,154.00	744,950.54	6.6
TOTAL FUND EXPENDITURES	54,085.04	94,851.22	1,535,363.00	1,440,511.78	6.2
NET REVENUE OVER EXPENDITURES	94,291.77	197,939.89	(64,125.00)	(262,064.89)	308.7

CITY OF BETHEL
REVENUES WITH COMPARISON TO BUDGET
FOR THE 2 MONTHS ENDING AUGUST 31, 2025

WATER & SEWER SERVICES

	PERIOD ACTUAL	YTD ACTUAL	BUDGET	UNEARNED	PCNT
<u>WATER</u>					
510-42-4384 CONTRACT WATER	1,320.00	2,632.00	20,320.00	17,688.00	13.0
510-42-4386 METERED PIPED WATER COMM.	83,534.09	203,547.71	1,076,224.00	872,676.29	18.9
510-42-4387 UNMETERED PIPED WTR RESID	89,428.90	179,198.76	1,030,876.00	851,677.24	17.4
510-42-4389 PUMPHOUSE WATER	2,243.50	6,122.25	36,124.00	30,001.75	17.0
510-42-4390 TRUCKED WATER	267,976.07	529,034.11	3,106,054.00	2,577,019.89	17.0
TOTAL WATER	444,502.56	920,534.83	5,269,598.00	4,349,063.17	17.5
<u>SEWER</u>					
510-43-4384 CONTRACT SEWER	2,461.06	4,922.12	62,560.00	57,637.88	7.9
510-43-4386 METERED PIPED SEWER COMM.	46,673.29	112,246.03	631,062.00	518,815.97	17.8
510-43-4387 UNMETERED PIPED SEWER RES	27,570.12	55,301.81	312,918.00	257,616.19	17.7
510-43-4390 TRUCKED SEWER (EVAC/HB)	203,127.35	405,488.39	2,448,916.00	2,043,427.61	16.6
TOTAL SEWER	279,831.82	577,958.35	3,455,456.00	2,877,497.65	16.7
<u>MISCELLANEOUS</u>					
510-45-4392 WATER SUBSCRIPTION FEES	18,855.52	37,385.69	223,825.00	186,439.31	16.7
510-45-4393 SEWER SUBSCRIPTION FEES	20,360.00	40,295.42	239,450.00	199,154.58	16.8
510-45-4394 RECONNECT FEES	.00	.00	3,090.00	3,090.00	.0
510-45-4429 SENIOR DISCOUNT	(5,569.35)	(10,991.93)	53,560.00	64,551.93	(20.5)
510-45-4430 NSF CHECKS AND FEES	120.00	120.00	60.00	(60.00)	200.0
510-45-4523 UTILITY PENALTY/INTEREST	5,308.43	8,914.19	72,145.00	63,230.81	12.4
510-45-4590 INVESTMENT INCOME	.00	.00	125,166.00	125,166.00	.0
TOTAL MISCELLANEOUS	39,074.60	75,723.37	717,296.00	641,572.63	10.6
<u>MISCELLANEOUS</u>					
510-49-4439 MISCELLANEOUS INCOME	7,792.79	11,927.08	97,664.00	85,736.92	12.2
510-49-6532 CASH OVER/SHORT	.00	5.00	515.00	510.00	1.0
TOTAL MISCELLANEOUS	7,792.79	11,932.08	98,179.00	86,246.92	12.2
TOTAL FUND REVENUE	771,201.77	1,586,148.63	9,540,529.00	7,954,380.37	16.6

CITY OF BETHEL
EXPENDITURES WITH COMPARISON TO BUDGET
FOR THE 2 MONTHS ENDING AUGUST 31, 2025

WATER & SEWER SERVICES

	PERIOD ACTUAL	YTD ACTUAL	BUDGET	UNEXPENDED	PCNT
<u>UTILITY BILLING</u>					
510-80-6000 SALARIES	.00	1,773.49	98,210.00	96,436.51	1.8
510-80-6010 OVERTIME	.00	27.37	3,000.00	2,972.63	.9
510-80-6023 LEAVE CASHOUT	.00	.00	4,791.00	4,791.00	.0
510-80-6031 PAYABLE MEDICARE FICA	.00	26.82	1,468.00	1,441.18	1.8
510-80-6032 UNEMPLOYMENT	.00	.00	1,807.00	1,807.00	.0
510-80-6033 WORKERS' COMPENSATION	.00	.00	219.00	219.00	.0
510-80-6034 PERS	.00	396.20	22,266.00	21,869.80	1.8
510-80-6040 EMPLOYEE GROUP BENEFITS	989.46	1,978.92	36,414.00	34,435.08	5.4
510-80-6041 UTILITY BENEFIT	.00	49.10	7,980.00	7,930.90	.6
510-80-6060 TRAVEL/TRAINING	.00	.00	4,500.00	4,500.00	.0
510-80-6100 SUPPLIES	699.96	699.96	3,500.00	2,800.04	20.0
510-80-6170 TELEPHONE	.00	.00	80.00	80.00	.0
510-80-6179 IT (ICR)	.00	.00	37,588.00	37,588.00	.0
510-80-6200 MINOR EQUIPMENT	.00	.00	4,000.00	4,000.00	.0
510-80-6335 OUTSOURCED SERVICES	5,914.04	12,576.49	60,000.00	47,423.51	21.0
510-80-6400 INSURANCE	.00	.00	3,667.00	3,667.00	.0
510-80-6506 POSTAGE	.00	.00	18,000.00	18,000.00	.0
510-80-6531 BANK CHARGES	.00	.00	40,000.00	40,000.00	.0
510-80-6539 MISCELLANEOUS EXPENSES	.00	.00	500.00	500.00	.0
510-80-6710 ADMIN OVERHEAD-GF	.00	.00	102,767.00	102,767.00	.0
TOTAL UTILITY BILLING	7,603.46	17,528.35	450,757.00	433,228.65	3.9

CITY OF BETHEL
EXPENDITURES WITH COMPARISON TO BUDGET
FOR THE 2 MONTHS ENDING AUGUST 31, 2025

WATER & SEWER SERVICES

	PERIOD ACTUAL	YTD ACTUAL	BUDGET	UNEXPENDED	PCNT
<u>HAULED WATER</u>					
510-81-6000 SALARIES	67,195.56	107,599.61	568,388.00	460,788.39	18.9
510-81-6010 OVERTIME	26,457.92	44,947.86	225,000.00	180,052.14	20.0
510-81-6023 LEAVE CASHOUT	.00	.00	27,726.00	27,726.00	.0
510-81-6030 SOCIAL SECURITY EXPENSE	3,812.51	6,138.52	.00	(6,138.52)	.0
510-81-6031 PAYABLE MEDICARE FICA	1,360.27	2,216.53	11,504.00	9,287.47	19.3
510-81-6032 UNEMPLOYMENT	.00	.00	11,453.00	11,453.00	.0
510-81-6034 PERS	7,075.82	11,779.07	174,545.00	162,765.93	6.8
510-81-6040 EMPLOYEE GROUP BENEFITS	3,500.01	6,999.96	190,913.00	183,913.04	3.7
510-81-6041 UTILITY BENEFIT	399.12	798.24	41,838.00	41,039.76	1.9
510-81-6100 SUPPLIES	5,452.74	5,452.74	15,000.00	9,547.26	36.4
510-81-6103 WEARING APPAREL	.00	.00	15,000.00	15,000.00	.0
510-81-6150 GASOLINE/DIESEL/OIL	3,198.11	3,391.38	150,000.00	146,608.62	2.3
510-81-6153 HEATING FUEL	.00	.00	22,500.00	22,500.00	.0
510-81-6155 WATER/SEWER/GARBAGE	.00	.00	6,750.00	6,750.00	.0
510-81-6160 ELECTRICITY	.00	.00	18,000.00	18,000.00	.0
510-81-6170 TELEPHONE	3.34	6.68	.00	(6.68)	.0
510-81-6171 STAFF CELLULAR PHONES	.00	99.72	598.00	498.28	16.7
510-81-6179 IT (ICR)	.00	.00	37,588.00	37,588.00	.0
510-81-6200 MINOR EQUIPMENT	.00	.00	5,000.00	5,000.00	.0
510-81-6230 VEHICLE MAINT/REPAIR	.00	.00	340,266.00	340,266.00	.0
510-81-6231 VEHICLE PARTS & TOOLS	20,544.18	22,987.88	125,000.00	102,012.12	18.4
510-81-6240 PROPERTY MAINT	.00	.00	51,041.00	51,041.00	.0
510-81-6332 LAB TESTS	.00	.00	3,000.00	3,000.00	.0
510-81-6335 OTHER PURCHASED SERVICES	.00	1,750.35	3,000.00	1,249.65	58.4
510-81-6400 INSURANCE	.00	.00	72,820.00	72,820.00	.0
510-81-6539 MISCELLANEOUS EXPENSES	.00	.00	2,000.00	2,000.00	.0
510-81-6710 ADMIN OVERHEAD-GF	.00	.00	102,767.00	102,767.00	.0
510-81-6890 CAP EXP	.00	22,213.06	620,000.00	597,786.94	3.6
TOTAL HAULED WATER	138,999.58	236,381.60	2,841,697.00	2,605,315.40	8.3

CITY OF BETHEL
EXPENDITURES WITH COMPARISON TO BUDGET
FOR THE 2 MONTHS ENDING AUGUST 31, 2025

WATER & SEWER SERVICES

	PERIOD ACTUAL	YTD ACTUAL	BUDGET	UNEXPENDED	PCNT
<u>PIPED WATER</u>					
510-82-6000 SALARIES	11,198.10	19,438.91	177,831.00	158,392.09	10.9
510-82-6010 OVERTIME	1,902.89	3,366.90	35,000.00	31,633.10	9.6
510-82-6023 LEAVE CASHOUT	.00	.00	8,693.00	8,693.00	.0
510-82-6030 SOCIAL SECURITY EXPENSE	68.84	135.80	942.00	806.20	14.4
510-82-6031 PAYABLE MEDICARE FICA	198.71	346.62	3,086.00	2,739.38	11.2
510-82-6032 UNEMPLOYMENT	.00	.00	3,788.00	3,788.00	.0
510-82-6033 WORKERS' COMPENSATION	.00	.00	4,180.00	4,180.00	.0
510-82-6034 PERS	2,637.93	4,535.39	43,479.00	38,943.61	10.4
510-82-6040 EMPLOYEE GROUP BENEFITS	3,565.97	7,131.96	52,020.00	44,888.04	13.7
510-82-6041 UTILITY BENEFIT	942.51	1,777.43	11,400.00	9,622.57	15.6
510-82-6060 TRAVEL/TRAINING	.00	.00	8,000.00	8,000.00	.0
510-82-6100 SUPPLIES	1,390.80	1,415.20	5,000.00	3,584.80	28.3
510-82-6103 WEARING APPAREL	.00	.00	5,000.00	5,000.00	.0
510-82-6108 PLUMBING SUPPLIES	.00	132.44	15,000.00	14,867.56	.9
510-82-6150 GASOLINE/DIESEL/OIL	614.89	1,429.75	15,000.00	13,570.25	9.5
510-82-6153 HEATING FUEL	1,722.75	2,146.03	48,400.00	46,253.97	4.4
510-82-6155 WATER/SEWER/GARBAGE	.00	.00	2,200.00	2,200.00	.0
510-82-6160 ELECTRICITY-UTIL MT SHOP	.00	413.09	8,200.00	7,786.91	5.0
510-82-6170 TELEPHONE	1.67	3.34	.00	(3.34)	.0
510-82-6171 STAFF CELLULAR PHONES	.00	252.64	1,197.00	944.36	21.1
510-82-6179 IT (ICR)	.00	.00	37,588.00	37,588.00	.0
510-82-6200 MINOR EQUIPMENT	1,415.64	1,415.64	.00	(1,415.64)	.0
510-82-6230 VEHICLE MAINT/REPAIR	.00	.00	3,293.00	3,293.00	.0
510-82-6231 VEHICLE PARTS & TOOLS	(31.15)	407.70	1,500.00	1,092.30	27.2
510-82-6232 TIRES & WHEELS	.00	.00	500.00	500.00	.0
510-82-6332 LAB TESTS	.00	.00	500.00	500.00	.0
510-82-6335 OTHER PURCHASED SERVICES	.00	145.86	1,500.00	1,354.14	9.7
510-82-6400 INSURANCE	.00	.00	9,093.00	9,093.00	.0
510-82-6401 INSURANCE-DED EXP & OTHER	.00	.00	530.00	530.00	.0
510-82-6710 ADMIN OVERHEAD-GF	.00	.00	102,767.00	102,767.00	.0
TOTAL PIPED WATER	25,629.55	44,494.70	605,687.00	561,192.30	7.4

CITY OF BETHEL
EXPENDITURES WITH COMPARISON TO BUDGET
FOR THE 2 MONTHS ENDING AUGUST 31, 2025

WATER & SEWER SERVICES

	PERIOD ACTUAL	YTD ACTUAL	BUDGET	UNEXPENDED	PCNT
<u>BETHEL HTS WTR TREATMENT</u>					
510-83-6000 SALARIES	17,513.12	29,331.28	154,800.00	125,468.72	19.0
510-83-6010 OVERTIME	501.84	810.27	37,000.00	36,189.73	2.2
510-83-6023 LEAVE CASHOUT	.00	1,590.66	7,551.00	5,960.34	21.1
510-83-6030 SOCIAL SECURITY EXPENSE	.00	33.48	.00	(33.48)	.0
510-83-6031 PAYABLE MEDICARE FICA	85.18	158.11	2,781.00	2,622.89	5.7
510-83-6032 UNEMPLOYMENT	.00	.00	2,292.00	2,292.00	.0
510-83-6033 WORKERS' COMPENSATION	.00	.00	3,767.00	3,767.00	.0
510-83-6034 PERS	3,963.30	6,512.37	42,196.00	35,683.63	15.4
510-83-6040 EMPLOYEE GROUP BENEFITS	1,628.47	3,256.87	36,414.00	33,157.13	8.9
510-83-6041 UTILITY BENEFIT	923.26	1,846.52	7,980.00	6,133.48	23.1
510-83-6060 TRAVEL/TRAINING	.00	.00	5,000.00	5,000.00	.0
510-83-6100 SUPPLIES	.00	278.35	4,000.00	3,721.65	7.0
510-83-6103 WEARING APPAREL	.00	.00	1,500.00	1,500.00	.0
510-83-6140 CHEMICALS	20,974.00	20,974.00	125,000.00	104,026.00	16.8
510-83-6153 HEATING FUEL (PUMPHOUSE)	2,915.34	9,203.70	190,000.00	180,796.30	4.8
510-83-6160 ELECTRICITY (PUMPHOUSE)	.00	6,048.00	130,525.00	124,477.00	4.6
510-83-6179 IT (ICR)	.00	.00	37,588.00	37,588.00	.0
510-83-6200 MINOR EQUIPMENT	.00	7,188.00	50,000.00	42,812.00	14.4
510-83-6230 VEHICLE MAINT/REPAIR	.00	.00	3,349.00	3,349.00	.0
510-83-6240 PROPERTY MAINT	219.99	219.99	30,625.00	30,405.01	.7
510-83-6332 LAB TESTS	290.00	290.00	4,000.00	3,710.00	7.3
510-83-6335 OTHER PURCHASED SERVICES	.00	145.86	10,000.00	9,854.14	1.5
510-83-6400 INSURANCE	.00	.00	53,351.00	53,351.00	.0
510-83-6710 ADMIN OVERHEAD-GF	.00	.00	102,767.00	102,767.00	.0
TOTAL BETHEL HTS WTR TREATMENT	49,014.50	87,887.46	1,042,486.00	954,598.54	8.4

CITY OF BETHEL
EXPENDITURES WITH COMPARISON TO BUDGET
FOR THE 2 MONTHS ENDING AUGUST 31, 2025

WATER & SEWER SERVICES

	PERIOD ACTUAL	YTD ACTUAL	BUDGET	UNEXPENDED	PCNT
<u>CITY SUB WTR TREATMENT</u>					
510-84-6000 SALARIES	22,515.89	38,255.20	211,690.00	173,434.80	18.1
510-84-6010 OVERTIME	8,545.79	11,990.71	45,000.00	33,009.29	26.7
510-84-6023 LEAVE CASHOUT	.00	1,590.65	10,326.00	8,735.35	15.4
510-84-6030 SOCIAL SECURITY EXPENSE	.00	33.48	.00	(33.48)	.0
510-84-6031 PAYABLE MEDICARE FICA	463.95	778.76	3,722.00	2,943.24	20.9
510-84-6032 UNEMPLOYMENT	.00	.00	3,343.00	3,343.00	.0
510-84-6033 WORKERS' COMPENSATION	.00	.00	5,042.00	5,042.00	.0
510-84-6034 PERS	6,833.56	10,935.29	56,472.00	45,536.71	19.4
510-84-6040 EMPLOYEE GROUP BENEFITS	3,500.01	6,999.95	59,303.00	52,303.05	11.8
510-84-6041 UTILITY BENEFIT	1,181.21	2,362.42	12,996.00	10,633.58	18.2
510-84-6060 TRAVEL/TRAINING	.00	.00	10,000.00	10,000.00	.0
510-84-6100 SUPPLIES	1,035.09	1,215.03	5,000.00	3,784.97	24.3
510-84-6103 WEARING APPAREL	.00	.00	3,000.00	3,000.00	.0
510-84-6108 PLUMBING SUPPLIES	.00	135.81	.00	(135.81)	.0
510-84-6140 CHEMICALS	20,974.00	20,974.00	125,000.00	104,026.00	16.8
510-84-6150 GASOLINE/DIESEL/OIL	.00	.00	5,500.00	5,500.00	.0
510-84-6153 HEATING FUEL(CS WTF)	5,820.10	15,873.53	120,000.00	104,126.47	13.2
510-84-6160 ELECTRICITY (CS WTF)	.00	8,127.51	98,900.00	90,772.49	8.2
510-84-6170 TELEPHONE	127.69	255.70	.00	(255.70)	.0
510-84-6171 CELL PHONE	.00	.00	1,197.00	1,197.00	.0
510-84-6179 IT (ICR)	.00	.00	37,588.00	37,588.00	.0
510-84-6200 MINOR EQUIPMENT	.00	(992.53)	43,000.00	43,992.53	(2.3)
510-84-6230 VEHICLE MAINT (ISF)	.00	.00	4,541.00	4,541.00	.0
510-84-6240 PROPERTY MAINT	158.58	158.58	51,041.00	50,882.42	.3
510-84-6332 LAB TESTS	205.00	1,645.00	20,000.00	18,355.00	8.2
510-84-6335 OTHER PURCHASED SERVICES	.00	.00	15,000.00	15,000.00	.0
510-84-6400 INSURANCE	.00	.00	67,976.00	67,976.00	.0
510-84-6502 ADVERTISING	.00	.00	500.00	500.00	.0
510-84-6710 ADMIN OVERHEAD-GF	.00	.00	102,767.00	102,767.00	.0
TOTAL CITY SUB WTR TREATMENT	71,360.87	120,339.09	1,118,904.00	998,564.91	10.8

CITY OF BETHEL
EXPENDITURES WITH COMPARISON TO BUDGET
FOR THE 2 MONTHS ENDING AUGUST 31, 2025

WATER & SEWER SERVICES

	PERIOD ACTUAL	YTD ACTUAL	BUDGET	UNEXPENDED	PCNT
<u>HAULED SEWER</u>					
510-85-6000 SALARIES	75,879.83	120,561.58	616,695.00	496,133.42	19.6
510-85-6010 OVERTIME	24,170.66	40,762.61	200,000.00	159,237.39	20.4
510-85-6023 LEAVE CASHOUT	.00	.00	30,083.00	30,083.00	.0
510-85-6030 SOCIAL SECURITY EXPENSE	3,995.67	6,321.62	.00	(6,321.62)	.0
510-85-6031 PAYABLE MEDICARE FICA	1,451.33	2,340.46	11,842.00	9,501.54	19.8
510-85-6032 UNEMPLOYMENT	.00	.00	7,753.00	7,753.00	.0
510-85-6033 WORKERS' COMPENSATION	.00	.00	18,061.00	18,061.00	.0
510-85-6034 PERS	7,832.79	13,059.58	179,673.00	166,613.42	7.3
510-85-6040 EMPLOYEE GROUP BENEFITS	5,371.55	10,743.02	211,721.00	200,977.98	5.1
510-85-6041 UTILITY BENEFIT	424.61	849.22	46,398.00	45,548.78	1.8
510-85-6100 SUPPLIES	2,385.91	2,814.50	15,000.00	12,185.50	18.8
510-85-6103 WEARING APPAREL	.00	605.47	15,000.00	14,394.53	4.0
510-85-6150 GASOLINE/DIESEL/OIL	2,533.38	3,963.37	110,000.00	106,036.63	3.6
510-85-6153 HEATING FUEL	.00	.00	22,500.00	22,500.00	.0
510-85-6155 WATER/SEWER/GARBAGE	.00	.00	6,750.00	6,750.00	.0
510-85-6160 ELECTRICITY	.00	.00	18,000.00	18,000.00	.0
510-85-6171 STAFF CELLULAR PHONES	.00	.00	598.00	598.00	.0
510-85-6179 IT (ICR)	.00	.00	37,588.00	37,588.00	.0
510-85-6200 MINOR EQUIPMENT	.00	.00	5,000.00	5,000.00	.0
510-85-6230 VEHICLE MAINT/REPAIR	.00	.00	334,930.00	334,930.00	.0
510-85-6231 VEHICLE PARTS & TOOLS	19,708.06	26,976.12	125,000.00	98,023.88	21.6
510-85-6240 PROPERTY MAINT	.00	.00	30,625.00	30,625.00	.0
510-85-6335 OTHER PURCHASED SERVICES	.00	.00	3,000.00	3,000.00	.0
510-85-6400 INSURANCE	.00	.00	76,442.00	76,442.00	.0
510-85-6539 MISCELLANEOUS EXPENSES	.00	.00	2,000.00	2,000.00	.0
510-85-6710 ADMIN OVERHEAD-GF	.00	.00	102,767.00	102,767.00	.0
TOTAL HAULED SEWER	143,753.79	228,997.55	2,227,426.00	1,998,428.45	10.3

CITY OF BETHEL
EXPENDITURES WITH COMPARISON TO BUDGET
FOR THE 2 MONTHS ENDING AUGUST 31, 2025

WATER & SEWER SERVICES

	PERIOD ACTUAL	YTD ACTUAL	BUDGET	UNEXPENDED	PCNT
<u>PIPED SEWER</u>					
510-86-6000 SALARIES	11,198.09	19,438.90	180,633.00	161,194.10	10.8
510-86-6010 OVERTIME	1,902.88	3,366.90	35,000.00	31,633.10	9.6
510-86-6023 LEAVE CASHOUT	.00	.00	7,445.00	7,445.00	.0
510-86-6030 SOCIAL SECURITY EXPENSE	68.84	135.80	1,736.00	1,600.20	7.8
510-86-6031 PAYABLE MEDICARE FICA	198.70	346.60	3,127.00	2,780.40	11.1
510-86-6032 UNEMPLOYMENT	.00	.00	3,838.00	3,838.00	.0
510-86-6033 WORKERS' COMPENSATION	.00	.00	4,769.00	4,769.00	.0
510-86-6034 PERS	2,637.95	4,535.40	41,279.00	36,743.60	11.0
510-86-6040 EMPLOYEE GROUP BENEFITS	3,565.99	7,131.96	49,939.00	42,807.04	14.3
510-86-6041 UTILITY BENEFITS	942.50	1,777.41	10,944.00	9,166.59	16.2
510-86-6100 SUPPLIES	.00	740.85	3,000.00	2,259.15	24.7
510-86-6103 WEARING APPAREL	.00	1,562.63	4,000.00	2,437.37	39.1
510-86-6108 PLUMBING SUPPLIES	.00	.00	7,500.00	7,500.00	.0
510-86-6150 GASOLINE/DIESEL/OIL	271.12	760.35	15,000.00	14,239.65	5.1
510-86-6153 HEATING FUEL	1,798.94	2,169.31	60,000.00	57,830.69	3.6
510-86-6155 WATER/SEWER/GARBAGE	.00	.00	2,200.00	2,200.00	.0
510-86-6160 ELECTRICITY-LIFTST & BLDG	.00	6,698.16	108,000.00	101,301.84	6.2
510-86-6171 CELL PHONE	.00	.00	1,197.00	1,197.00	.0
510-86-6179 IT (ICR)	.00	.00	37,588.00	37,588.00	.0
510-86-6200 MINOR EQUIPMENT	6,524.29	6,582.19	150,000.00	143,417.81	4.4
510-86-6230 VEHICLE MAINT/REPAIR	.00	.00	4,087.00	4,087.00	.0
510-86-6231 VEHICLE PARTS & TOOLS	646.31	1,648.73	1,500.00	(148.73)	109.9
510-86-6232 TIRES & WHEELS	.00	.00	500.00	500.00	.0
510-86-6240 PROPERTY MAINT	.00	.00	51,041.00	51,041.00	.0
510-86-6335 OTHER PURCHASED SERVICES	.00	1,154.41	10,000.00	8,845.59	11.5
510-86-6400 INSURANCE	.00	.00	10,255.00	10,255.00	.0
510-86-6410 LEASED PROPERTY-LIFT STATIONS	.00	.00	17,000.00	17,000.00	.0
510-86-6710 ADMIN OVERHEAD-GF	.00	.00	102,767.00	102,767.00	.0
TOTAL PIPED SEWER	29,755.61	58,049.60	924,345.00	866,295.40	6.3

CITY OF BETHEL
EXPENDITURES WITH COMPARISON TO BUDGET
FOR THE 2 MONTHS ENDING AUGUST 31, 2025

WATER & SEWER SERVICES

	PERIOD ACTUAL	YTD ACTUAL	BUDGET	UNEXPENDED	PCNT
<u>SEWER LAGOON</u>					
510-87-6000 SALARIES	5,219.44	8,562.96	39,296.00	30,733.04	21.8
510-87-6010 OVERTIME	221.24	245.88	6,250.00	6,004.12	3.9
510-87-6023 LEAVE CASHOUT	.00	.00	2,300.00	2,300.00	.0
510-87-6030 SOCIAL SECURITY EXPENSE	.00	22.32	.00	(22.32)	.0
510-87-6031 PAYABLE MEDICARE FICA	79.38	128.32	660.00	531.68	19.4
510-87-6032 UNEMPLOYMENT	.00	.00	811.00	811.00	.0
510-87-6033 WORKERS' COMPENSATION	.00	.00	1,007.00	1,007.00	.0
510-87-6034 PERS	1,196.94	1,858.74	10,020.00	8,161.26	18.6
510-87-6040 EMPLOYEE GROUP BENEFITS	576.22	1,153.09	12,485.00	11,331.91	9.2
510-87-6041 UTILITY BENEFIT	63.70	103.49	2,736.00	2,632.51	3.8
510-87-6060 TRAVEL/TRAINING	.00	.00	3,000.00	3,000.00	.0
510-87-6100 SUPPLIES	.00	50.10	1,000.00	949.90	5.0
510-87-6103 WEARING APPAREL	.00	.00	3,000.00	3,000.00	.0
510-87-6108 PLUMBING SUPPLIES	.00	.00	3,000.00	3,000.00	.0
510-87-6150 GASOLINE/DIESEL/OIL	.00	.00	38,000.00	38,000.00	.0
510-87-6200 MINOR EQUIPMENT	.00	.00	1,100.00	1,100.00	.0
510-87-6231 VEHICLE PARTS & TOOLS	112.55	1,067.39	160.00	(907.39)	667.1
510-87-6324 PLANNING/ENGINEERING FEES	.00	.00	15,000.00	15,000.00	.0
510-87-6332 LAB TESTS (SAMPLES)	.00	4,135.70	500.00	(3,635.70)	827.1
510-87-6400 INSURANCE	.00	.00	1,650.00	1,650.00	.0
510-87-6503 DUES & SUBSCRIPTIONS	.00	.00	8,000.00	8,000.00	.0
510-87-6710 ADMIN OVERHEAD-GF	.00	.00	102,767.00	102,767.00	.0
TOTAL SEWER LAGOON	7,469.47	17,327.99	252,742.00	235,414.01	6.9
TOTAL FUND EXPENDITURES	473,586.83	811,006.34	9,464,044.00	8,653,037.66	8.6
NET REVENUE OVER EXPENDITURES	297,614.94	775,142.29	76,485.00	(698,657.29)	1013.5

CITY OF BETHEL
REVENUES WITH COMPARISON TO BUDGET
FOR THE 2 MONTHS ENDING AUGUST 31, 2025

MUNICIPAL DOCK

	PERIOD ACTUAL	YTD ACTUAL	BUDGET	UNEARNED	PCNT
<u>CHARGES FOR SERVICES</u>					
520-43-4402	.00	90.00	75,000.00	74,910.00	.1
520-43-4403	.00	.00	3,000.00	3,000.00	.0
520-43-4404	11,357.16	11,357.16	140,000.00	128,642.84	8.1
520-43-4405	2,924.19	2,924.19	30,000.00	27,075.81	9.8
520-43-4409	27,324.44	27,324.44	250,000.00	222,675.56	10.9
520-43-4410	.00	.00	2,000.00	2,000.00	.0
520-43-4412	54,648.88	54,648.88	500,000.00	445,351.12	10.9
520-43-4413	5,283.56	5,283.56	25,000.00	19,716.44	21.1
520-43-4415	.00	.00	30,000.00	30,000.00	.0
520-43-4416	1,664.78	1,664.78	30,000.00	28,335.22	5.6
520-43-4418	375.84	375.84	35,000.00	34,624.16	1.1
520-43-4419	7,714.15	7,714.15	110,000.00	102,285.85	7.0
520-43-4420	5,537.77	5,537.77	35,000.00	29,462.23	15.8
520-43-4422	264.00	1,128.00	15,000.00	13,872.00	7.5
TOTAL CHARGES FOR SERVICES	117,094.77	118,048.77	1,280,000.00	1,161,951.23	9.2
<u>LEASE REVENUE</u>					
520-44-4440	.00	.00	32,412.00	32,412.00	.0
TOTAL LEASE REVENUE	.00	.00	32,412.00	32,412.00	.0
<u>MISCELLANEOUS</u>					
520-45-4388	4,702.80	4,702.80	30,000.00	25,297.20	15.7
520-45-4424	.00	.00	5,000.00	5,000.00	.0
520-45-4535	30.00	30.00	12,000.00	11,970.00	.3
TOTAL MISCELLANEOUS	4,732.80	4,732.80	47,000.00	42,267.20	10.1
<u>MISCELLANEOUS</u>					
520-49-4439	225.00	225.00	2,000.00	1,775.00	11.3
520-49-4590	.00	.00	33,876.00	33,876.00	.0
520-49-4591	.00	.00	33,876.00	33,876.00	.0
TOTAL MISCELLANEOUS	225.00	225.00	69,752.00	69,527.00	.3
TOTAL FUND REVENUE	122,052.57	123,006.57	1,429,164.00	1,306,157.43	8.6

CITY OF BETHEL
EXPENDITURES WITH COMPARISON TO BUDGET
FOR THE 2 MONTHS ENDING AUGUST 31, 2025

MUNICIPAL DOCK

	PERIOD ACTUAL	YTD ACTUAL	BUDGET	UNEXPENDED	PCNT
<u>DOCK EXPENDITURES</u>					
520-50-6000 SALARIES	21,375.52	36,560.03	205,121.00	168,560.97	17.8
520-50-6010 OVERTIME	246.28	400.26	5,000.00	4,599.74	8.0
520-50-6023 LEAVE CASHOUT	2,345.58	2,345.58	9,001.00	6,655.42	26.1
520-50-6030 SOCIAL SECURITY EXPENSE	168.19	344.96	1,277.00	932.04	27.0
520-50-6031 PAYABLE MEDICARE FICA	356.98	589.36	3,047.00	2,457.64	19.3
520-50-6032 UNEMPLOYMENT	.00	.00	2,402.00	2,402.00	.0
520-50-6033 WORKERS' COMPENSATION	.00	.00	5,817.00	5,817.00	.0
520-50-6034 PERS	4,160.01	6,907.22	41,696.00	34,788.78	16.6
520-50-6040 EMPLOYEE GROUP BENEFITS	4,500.14	8,469.71	52,436.00	43,966.29	16.2
520-50-6041 UTILITY BENEFIT	836.53	1,673.07	11,491.00	9,817.93	14.6
520-50-6060 TRAVEL/TRAINING	.00	.00	5,000.00	5,000.00	.0
520-50-6100 SUPPLIES	.00	.00	8,000.00	8,000.00	.0
520-50-6103 WEARING APPAREL	.00	.00	5,000.00	5,000.00	.0
520-50-6121 MUNICIPAL DOCK GRAVEL	.00	.00	130,000.00	130,000.00	.0
520-50-6150 GASOLINE/DIESEL/OIL	1,672.06	4,760.13	15,000.00	10,239.87	31.7
520-50-6153 HEATING FUEL	.00	948.15	5,000.00	4,051.85	19.0
520-50-6155 WATER/SEWER/GARBAGE	.00	.00	13,500.00	13,500.00	.0
520-50-6156 WATER FOR BARGES	.00	.00	12,000.00	12,000.00	.0
520-50-6160 ELECTRICITY	.00	1,036.38	18,900.00	17,863.62	5.5
520-50-6170 TELEPHONE	192.37	385.22	2,316.00	1,930.78	16.6
520-50-6171 STAFF CELLULAR PHONES	.00	133.40	1,197.00	1,063.60	11.1
520-50-6179 IT (ICR)	.00	.00	37,588.00	37,588.00	.0
520-50-6200 MINOR EQUIPMENT	.00	.00	10,000.00	10,000.00	.0
520-50-6230 VEHICLE MAINT/REPAIR	.00	.00	3,633.00	3,633.00	.0
520-50-6231 VEHICLE PARTS & TOOLS	.00	435.91	5,000.00	4,564.09	8.7
520-50-6241 MUNICIPAL DOCK MAINT.	.00	.00	20,000.00	20,000.00	.0
520-50-6242 MAINT-SEAWALL	.00	.00	7,000.00	7,000.00	.0
520-50-6244 ICR-PROPERTY MAINTENANCE 5%	.00	.00	30,625.00	30,625.00	.0
520-50-6339 OTHER PURCHASED SERVICES	.00	278.04	.00	(278.04)	.0
520-50-6400 INSURANCE	.00	.00	72,739.00	72,739.00	.0
520-50-6502 ADVERTISING	.00	.00	1,000.00	1,000.00	.0
520-50-6503 DUES & SUBSCRIPTIONS	.00	.00	2,000.00	2,000.00	.0
520-50-6531 BANK CHARGES	.00	.00	3,000.00	3,000.00	.0
520-50-6539 MISCELLANEOUS EXPENSES	.00	.00	900.00	900.00	.0
520-50-6710 ADMIN OVERHEAD-GF	.00	.00	172,402.00	172,402.00	.0
520-50-6890 CAPITAL EXPENDITURES	.00	150,308.36	.00	(150,308.36)	.0
TOTAL DOCK EXPENDITURES	35,853.66	215,575.78	919,088.00	703,512.22	23.5

CITY OF BETHEL
EXPENDITURES WITH COMPARISON TO BUDGET
FOR THE 2 MONTHS ENDING AUGUST 31, 2025

MUNICIPAL DOCK

	PERIOD ACTUAL	YTD ACTUAL	BUDGET	UNEXPENDED	PCNT
<u>DEPARTMENT 55</u>					
520-55-6000 SALARIES	15,431.10	25,480.62	113,114.00	87,633.38	22.5
520-55-6010 OVERTIME	27.37	72.98	1,500.00	1,427.02	4.9
520-55-6023 LEAVE CASHOUT	260.62	260.62	1,388.00	1,127.38	18.8
520-55-6030 SOCIAL SECURITY EXPENSE	723.12	1,201.60	5,248.00	4,046.40	22.9
520-55-6031 PAYABLE MEDICARE FICA	228.03	375.01	1,662.00	1,286.99	22.6
520-55-6032 UNEMPLOYMENT	.00	.00	2,040.00	2,040.00	.0
520-55-6033 WORKERS' COMPENSATION	.00	.00	3,173.00	3,173.00	.0
520-55-6034 PERS	834.92	1,358.04	6,591.00	5,232.96	20.6
520-55-6040 EMPLOYEE GROUP BENEFITS	791.56	1,052.57	9,988.00	8,935.43	10.5
520-55-6041 UTILITY BENEFIT	53.35	106.69	2,189.00	2,082.31	4.9
520-55-6100 SUPPLIES	559.92	1,651.65	3,000.00	1,348.35	55.1
520-55-6103 WEARING APPAREL	.00	.00	3,000.00	3,000.00	.0
520-55-6132 SMALL BOAT HARBOR GRAVEL	.00	.00	30,000.00	30,000.00	.0
520-55-6150 GASOLINE/DIESEL/OIL	.00	.00	12,000.00	12,000.00	.0
520-55-6200 MINOR EQUIPMENT	.00	.00	4,000.00	4,000.00	.0
520-55-6241 SMALL BOAT HARBOR MAINTENANCE	31.99	171.96	6,000.00	5,828.04	2.9
520-55-6400 INSURANCE	.00	.00	4,153.00	4,153.00	.0
520-55-6539 MISCELLANEOUS EXPENSES	.00	.00	1,000.00	1,000.00	.0
520-55-6710 ADMIN OVERHEAD-GF	.00	.00	28,016.00	28,016.00	.0
TOTAL DEPARTMENT 55	18,941.98	31,731.74	238,062.00	206,330.26	13.3
TOTAL FUND EXPENDITURES	54,795.64	247,307.52	1,157,150.00	909,842.48	21.4
NET REVENUE OVER EXPENDITURES	67,256.93	(124,300.95)	272,014.00	396,314.95	(45.7)

CITY OF BETHEL
REVENUES WITH COMPARISON TO BUDGET
FOR THE 2 MONTHS ENDING AUGUST 31, 2025

LEASED PROPERTIES

	PERIOD ACTUAL	YTD ACTUAL	BUDGET	UNEARNED	PCNT
<u>LEASE INCOME</u>					
530-44-4443 LEASE-SOA DEPT OF ADMIN-OCS	.00	.00	108,000.00	108,000.00	.0
530-44-4444 LEASE-COURT SYSTEM	.00	.00	486,528.00	486,528.00	.0
530-44-4447 LEASE:DEPT OF LAW	.00	.00	169,056.00	169,056.00	.0
530-44-4451 LEASE-BETHEL SPORTSMANS CLUB	.00	.00	1.00	1.00	.0
530-44-4452 LEASE-FW TOWER RD LND ASPHALT	.00	.00	12,600.00	12,600.00	.0
530-44-4453 YKHC - WAREHOUSE	.00	.00	5,808.00	5,808.00	.0
530-44-4455 DMV LEASE 300 CEHHWY	.00	.00	12,360.00	12,360.00	.0
530-44-4456 LEASE-LIONS CLUB	.00	.00	1,800.00	1,800.00	.0
530-44-4459 LAND LEASE-BETHEL GROUP HOME	.00	.00	3,600.00	3,600.00	.0
530-44-4461 LEASE LAND AVCP HEARSTART	.00	.00	3,300.00	3,300.00	.0
530-44-4463 LEASE LAND SWANSONS/BTP	.00	.00	24,084.00	24,084.00	.0
530-44-4467 LEASE LAND EUNKANG CHURCH	.00	.00	1,800.00	1,800.00	.0
530-44-4470 LEASE LAND GCI	.00	.00	12,612.00	12,612.00	.0
530-44-4474 LEASE:SOA DOT&PUBFAL(560 4TH)	.00	.00	9,600.00	9,600.00	.0
530-44-9455 YKHC RENTED BLDING 378 FIFTH	.00	.00	20,364.00	20,364.00	.0
TOTAL LEASE INCOME	.00	.00	871,513.00	871,513.00	.0
 <u>MISCELLANEOUS</u>					
530-49-4590 INVESTMENT INCOME	.00	.00	7,500.00	7,500.00	.0
TOTAL MISCELLANEOUS	.00	.00	7,500.00	7,500.00	.0
TOTAL FUND REVENUE	.00	.00	879,013.00	879,013.00	.0

CITY OF BETHEL
EXPENDITURES WITH COMPARISON TO BUDGET
FOR THE 2 MONTHS ENDING AUGUST 31, 2025

LEASED PROPERTIES

	PERIOD ACTUAL	YTD ACTUAL	BUDGET	UNEXPENDED	PCNT
<u>LEASED PROPERTIES-MISC</u>					
530-50-6153 HEATING FUEL	.00	.00	21,600.00	21,600.00	.0
530-50-6155 WATER	.00	.00	21,600.00	21,600.00	.0
530-50-6160 ELECTRICITY	.00	.00	21,600.00	21,600.00	.0
530-50-6339 OTHER PURCHASED SERVICES	.00	.00	12,960.00	12,960.00	.0
530-50-6400 INSURANCE	.00	.00	10,726.00	10,726.00	.0
TOTAL LEASED PROPERTIES-MISC	.00	.00	88,486.00	88,486.00	.0
<u>LEASED PROP-COURT COMPLEX</u>					
530-55-6153 HEATING FUEL-COURTCOMPLEX	4,191.53	5,196.82	61,598.00	56,401.18	8.4
530-55-6155 WATER/SEWER/GARB-COURTCOM	.00	.00	23,240.00	23,240.00	.0
530-55-6160 ELECTRICITY-COURT COMPLEX	.00	8,065.03	97,570.00	89,504.97	8.3
530-55-6170 TELEPHONE	63.01	126.18	800.00	673.82	15.8
530-55-6240 PROPERTY MT-COURT COMPLEX	.00	62.98	122,499.00	122,436.02	.1
530-55-6241 ICR-PROPERTY MAINTENANCE-15%	.00	.00	25,000.00	25,000.00	.0
530-55-6333 JANITORIAL-COURT COMPLEX	.00	7,450.00	89,500.00	82,050.00	8.3
530-55-6339 OTHER PURCHASED SERVICES	.00	.00	2,500.00	2,500.00	.0
530-55-6400 INSURANCE	.00	.00	51,121.00	51,121.00	.0
530-55-6421 BOND INTEREST EXPENSE	.00	.00	29,500.00	29,500.00	.0
530-55-6710 ADMIN OVERHEAD	.00	.00	121,105.00	121,105.00	.0
TOTAL LEASED PROP-COURT COMPLEX	4,254.54	20,901.01	624,433.00	603,531.99	3.4
TOTAL FUND EXPENDITURES	4,254.54	20,901.01	712,919.00	692,017.99	2.9
NET REVENUE OVER EXPENDITURES	(4,254.54)	(20,901.01)	166,094.00	186,995.01	(12.6)

CITY OF BETHEL
 REVENUES WITH COMPARISON TO BUDGET
 FOR THE 2 MONTHS ENDING AUGUST 31, 2025

BETHEL PUBLIC TRANSIT SYSTEM

	PERIOD ACTUAL	YTD ACTUAL	BUDGET	UNEARNED	PCNT
<u>LOCAL SOURCES</u>					
560-40-4600 CASH TRANSFER GF	.00	.00	257,459.00	257,459.00	.0
TOTAL LOCAL SOURCES	.00	.00	257,459.00	257,459.00	.0
<u>FEDERAL SOURCES</u>					
560-41-4101 REV-FEDERAL TRANSIT 5311	.00	.00	278,271.00	278,271.00	.0
TOTAL FEDERAL SOURCES	.00	.00	278,271.00	278,271.00	.0
<u>CHARGES FOR SERVICES</u>					
560-43-4370 BUS FARES	940.00	4,161.00	40,000.00	35,839.00	10.4
TOTAL CHARGES FOR SERVICES	940.00	4,161.00	40,000.00	35,839.00	10.4
TOTAL FUND REVENUE	940.00	4,161.00	575,730.00	571,569.00	.7

CITY OF BETHEL
EXPENDITURES WITH COMPARISON TO BUDGET
FOR THE 2 MONTHS ENDING AUGUST 31, 2025

BETHEL PUBLIC TRANSIT SYSTEM

	PERIOD ACTUAL	YTD ACTUAL	BUDGET	UNEXPENDED	PCNT
<u>TRANSIT SYSTEM SECTION 5311</u>					
560-50-6000 SALARIES	18,636.16	28,372.65	151,057.00	122,684.35	18.8
560-50-6010 OVERTIME	2,485.24	5,358.31	15,000.00	9,641.69	35.7
560-50-6023 LEAVE CASHOUT	.00	.00	6,010.00	6,010.00	.0
560-50-6030 SOCIAL SECURITY EXPENSE	.00	.00	1,727.00	1,727.00	.0
560-50-6031 PAYABLE MEDICARE FICA	312.69	501.98	2,408.00	1,906.02	20.9
560-50-6032 UNEMPLOYMENT	.00	.00	1,916.00	1,916.00	.0
560-50-6033 WORKERS' COMPENSATION	.00	.00	4,290.00	4,290.00	.0
560-50-6034 PERS	4,646.72	7,420.82	30,403.00	22,982.18	24.4
560-50-6040 EMPLOYEE GROUP BENEFITS	4,130.56	8,261.12	41,616.00	33,354.88	19.9
560-50-6041 UTILITY BENEFIT	736.35	1,472.70	9,120.00	7,647.30	16.2
560-50-6100 SUPPLIES	(2,448.40)	(2,448.40)	2,000.00	4,448.40	(122.4)
560-50-6150 GASOLINE/DIESEL/OIL	1,473.34	3,167.65	24,000.00	20,832.35	13.2
560-50-6153 HEATING FUEL	669.84	669.84	15,000.00	14,330.16	4.5
560-50-6155 WTR/SWR/GRB	.00	.00	4,200.00	4,200.00	.0
560-50-6160 ELECTRICITY	.00	441.93	6,000.00	5,558.07	7.4
560-50-6170 TELEPHONE	1.67	3.34	.00	(3.34)	.0
560-50-6171 STAFF CELLULAR PHONES	.00	49.86	598.00	548.14	8.3
560-50-6179 IT (ICR)	.00	.00	37,588.00	37,588.00	.0
560-50-6230 VEHICLE MAINT/REPAIR	.00	.00	29,519.00	29,519.00	.0
560-50-6231 VEHICLE PARTS & TOOLS	310.02	1,841.56	5,000.00	3,158.44	36.8
560-50-6240 PROPERTY MAINTENANCE (ISF)	.00	.00	40,833.00	40,833.00	.0
560-50-6400 INSURANCE	.00	.00	13,242.00	13,242.00	.0
560-50-6503 DUES & SUBSCRIPTIONS	.00	.00	300.00	300.00	.0
560-50-6539 MISCELLANEOUS EXPENSES	.00	.00	1,500.00	1,500.00	.0
560-50-6710 ADMIN OVERHEAD-GF	.00	.00	92,404.00	92,404.00	.0
TOTAL TRANSIT SYSTEM SECTION 5311	30,954.19	55,113.36	535,731.00	480,617.64	10.3
TOTAL FUND EXPENDITURES	30,954.19	55,113.36	535,731.00	480,617.64	10.3
NET REVENUE OVER EXPENDITURES	(30,014.19)	(50,952.36)	39,999.00	90,951.36	(127.4)

CITY OF BETHEL
 REVENUES WITH COMPARISON TO BUDGET
 FOR THE 2 MONTHS ENDING AUGUST 31, 2025

VEHICLES & EQUIP MAINTENANCE

	PERIOD ACTUAL	YTD ACTUAL	BUDGET	UNEARNED	PCNT
<u>CHARGES FOR SERVICES</u>					
570-43-4651 FROM GF-ADMIN	.00	.00	2,271.00	2,271.00	.0
570-43-4653 FROM GF-FINANCE	.00	.00	2,271.00	2,271.00	.0
570-43-4654 FROM GF-PLANNING	.00	.00	1,703.00	1,703.00	.0
570-43-4655 FROM GF-FIRE	.00	.00	20,436.00	20,436.00	.0
570-43-4656 FROM GF-POLICE	.00	.00	23,388.00	23,388.00	.0
570-43-4657 FROM GF-PW ADMIN	.00	.00	4,882.00	4,882.00	.0
570-43-4658 FROM GF-STREETS/ROADS	.00	.00	173,745.00	173,745.00	.0
570-43-4661 FROM GF-PROPERTY MAINT.	.00	.00	7,039.00	7,039.00	.0
570-43-4664 FROM GF-PIPED SEWER	.00	.00	4,087.00	4,087.00	.0
570-43-4671 FROM EF-PORT	.00	.00	3,633.00	3,633.00	.0
570-43-4672 FROM EF-HAULED WATER	.00	.00	340,266.00	340,266.00	.0
570-43-4673 FROM EF-HAULED SEWER	.00	.00	334,930.00	334,930.00	.0
570-43-4674 FROM EF-PIPED WATER	.00	.00	3,293.00	3,293.00	.0
570-43-4676 FROM EF-HAULED REFUSE	.00	.00	80,578.00	80,578.00	.0
570-43-4677 FROM EF-LANDFILL OPERATIONS	.00	.00	90,828.00	90,828.00	.0
570-43-4678 FROM EF-BETHEL HGT WATER TRMT	.00	.00	3,349.00	3,349.00	.0
570-43-4680 FROM EF-CITY SUB WATER TRMT	.00	.00	4,541.00	4,541.00	.0
570-43-4684 FROM EF-BETHEL TRANSIT SYSTEM	.00	.00	29,519.00	29,519.00	.0
570-43-4686 FROM EF- YKAHTC	.00	.00	1,132.00	1,132.00	.0
TOTAL CHARGES FOR SERVICES	.00	.00	1,131,891.00	1,131,891.00	.0
TOTAL FUND REVENUE	.00	.00	1,131,891.00	1,131,891.00	.0

CITY OF BETHEL
EXPENDITURES WITH COMPARISON TO BUDGET
FOR THE 2 MONTHS ENDING AUGUST 31, 2025

VEHICLES & EQUIP MAINTENANCE

	PERIOD ACTUAL	YTD ACTUAL	BUDGET	UNEXPENDED	PCNT
<u>VEHICLE & EQUIP MAINT</u>					
570-50-6000 SALARIES	32,464.14	57,294.58	446,392.00	389,097.42	12.8
570-50-6010 OVERTIME	1,175.60	1,744.52	15,000.00	13,255.48	11.6
570-50-6023 LEAVE CASHOUT	.00	.00	21,775.00	21,775.00	.0
570-50-6030 SOCIAL SECURITY EXPENSE	82.46	245.02	.00	(245.02)	.0
570-50-6031 PAYABLE MEDICARE FICA	504.44	890.30	6,690.00	5,799.70	13.3
570-50-6032 UNEMPLOYMENT	.00	.00	5,145.00	5,145.00	.0
570-50-6033 WORKERS' COMPENSATION	.00	.00	10,775.00	10,775.00	.0
570-50-6034 PERS	7,108.22	12,119.10	101,506.00	89,386.90	11.9
570-50-6040 EMPLOYEE GROUP BENEFITS	4,245.38	7,357.95	147,737.00	140,379.05	5.0
570-50-6041 UTILITY BENEFIT	1,433.24	2,866.46	32,376.00	29,509.54	8.9
570-50-6060 TRAVEL/TRAINING	.00	.00	5,000.00	5,000.00	.0
570-50-6100 SUPPLIES	361.80	439.25	10,000.00	9,560.75	4.4
570-50-6103 WEARING APPAREL	.00	113.97	4,000.00	3,886.03	2.9
570-50-6150 GASOLINE/DIESEL/OIL	199.33	387.00	8,000.00	7,613.00	4.8
570-50-6153 HEATING FUEL	.00	.00	22,500.00	22,500.00	.0
570-50-6155 WATER/SEWER/GARBAGE	.00	.00	6,750.00	6,750.00	.0
570-50-6160 ELECTRICITY	.00	.00	18,000.00	18,000.00	.0
570-50-6179 IT (ICR)	.00	.00	37,588.00	37,588.00	.0
570-50-6200 MINOR EQUIPMENT	.00	1,443.73	5,000.00	3,556.27	28.9
570-50-6231 VEHICLE PARTS & TOOLS	.00	1,254.48	10,000.00	8,745.52	12.5
570-50-6339 OTHER PURCHASED SERVICES	.00	583.44	5,000.00	4,416.56	11.7
570-50-6400 INSURANCE	.00	.00	38,390.00	38,390.00	.0
570-50-6503 DUES & SUBSCRIPTIONS	.00	.00	20,000.00	20,000.00	.0
570-50-6710 ADMIN OVERHEAD-GF	.00	.00	154,269.00	154,269.00	.0
TOTAL VEHICLE & EQUIP MAINT	47,574.61	86,739.80	1,131,893.00	1,045,153.20	7.7
TOTAL FUND EXPENDITURES	47,574.61	86,739.80	1,131,893.00	1,045,153.20	7.7
NET REVENUE OVER EXPENDITURES	(47,574.61)	(86,739.80)	(2.00)	86,737.80	(43369